

BULKHEAD LINE ESTABLISHED BY SECRETARY OF WAR APRIL 25, 1890

PLACE

OR

WHARF

STREET

MARGINAL

STREET

STREET

Docks

OF

COMMISSIONER

BY

ESTABLISHED

LINE

BY

SECRETARY

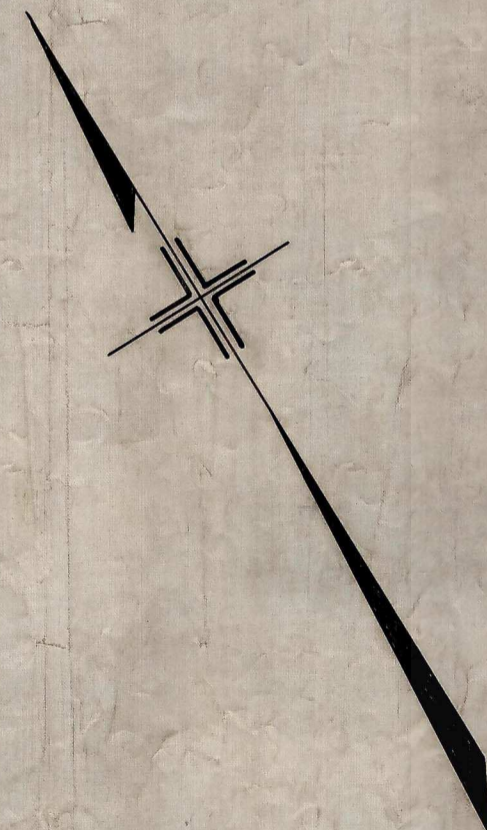
OF

WAR

APRIL

25,

1890



AVENUE

TWELFTH

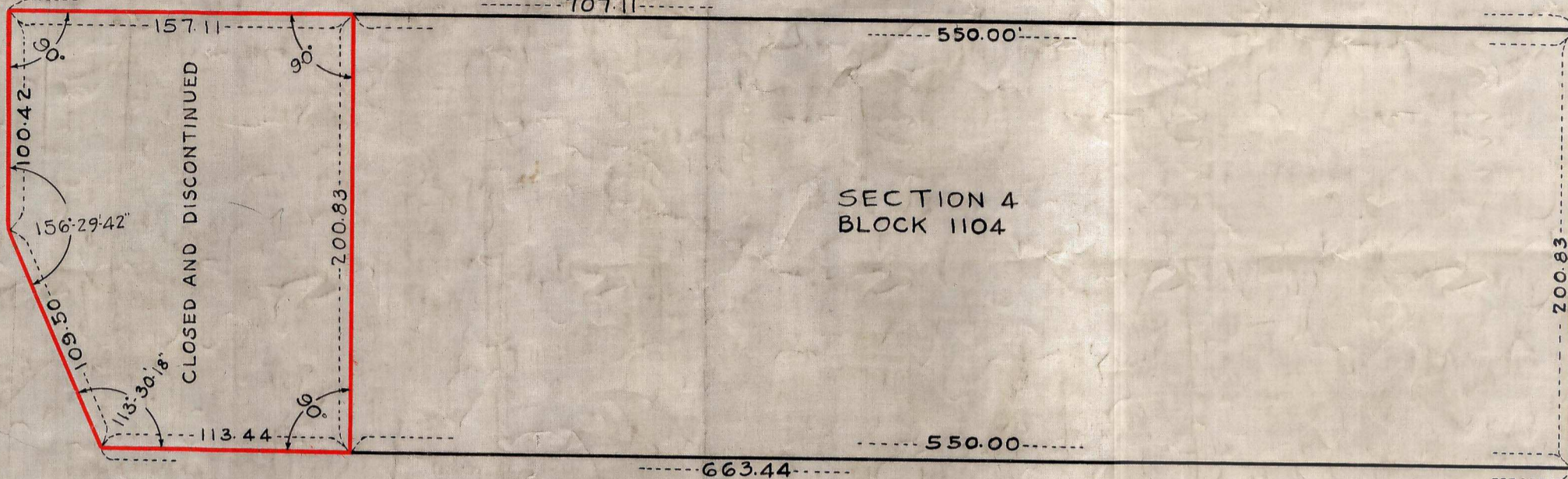
WEST 57TH STREET

WEST 56TH STREET

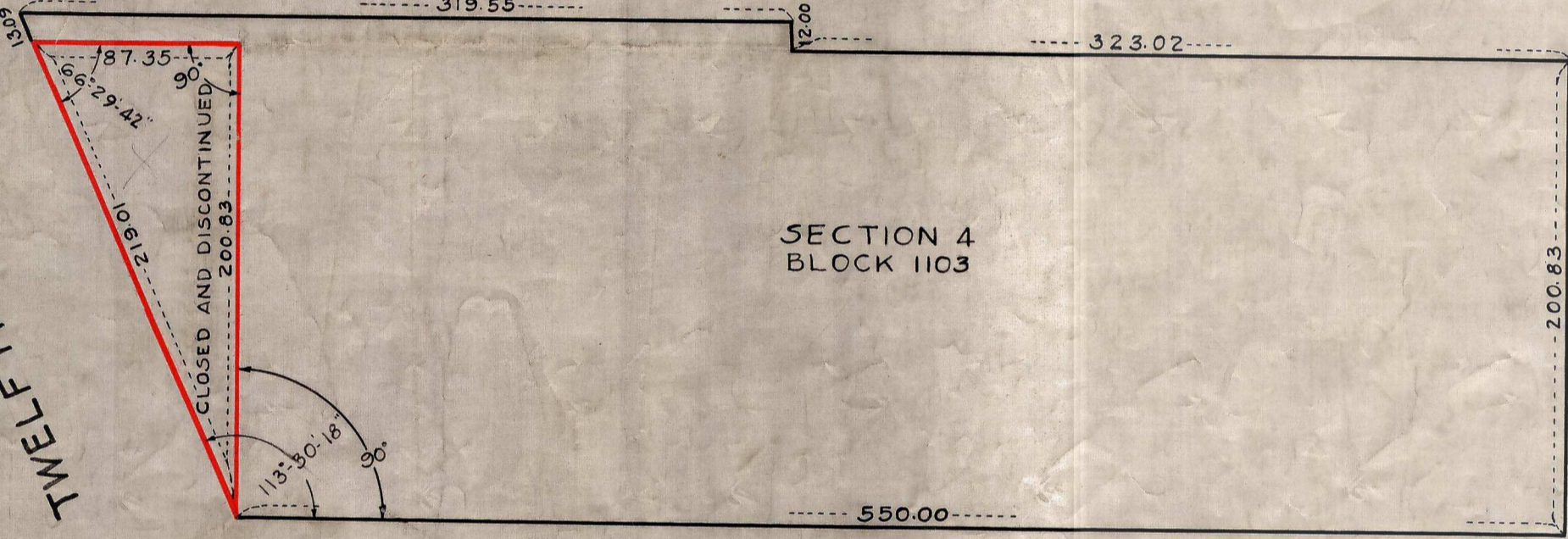
WEST 55TH STREET

AVENUE

ELEVENTH



SECTION 4
BLOCK 1104



SECTION 4
BLOCK 1103

LEGEND

THOSE PORTIONS OF TWELFTH AVENUE TO BE DISCONTINUED AND CLOSED ARE SHOWN BOUNDED BY FULL RED LINES

CITY OF NEW YORK BOROUGH OF MANHATTAN
DEPARTMENT OF BOROUGH WORKS
BUREAU OF SEWERS AND HIGHWAYS

MAP
CLOSING AND DISCONTINUING

PORTIONS OF
12TH AVENUE

BETWEEN
WEST 55TH STREET AND WEST 57TH STREET

PURSUANT TO CHAPTER 15 TITLE 'E' OF THE
ADMINISTRATIVE CODE FOR THE CITY OF NEW YORK
DATED FEB. 3, 1938 SCALE: 1"=50'

I, FRANCES LEHRICH, SECRETARY OF THE BOARD OF ESTIMATE OF THE CITY OF NEW YORK DO HEREBY CERTIFY THAT THIS MAP IS ONE OF FOUR SIMILAR MAPS ADOPTED BY THE SAID BOARD OF ESTIMATE ON THE 2ND DAY OF FEBRUARY, 1938.

DATED, NEW YORK, MARCH 22, 1938.

Frances Lehrich
SECRETARY, BOARD OF ESTIMATE

J. H. Hammond
CHIEF ENGINEER

Henry H. ...
PRESIDENT BOROUGH OF MANHATTAN

DRAWN BY E.I.K.
CHECKED BY T.R.L.

J. C. Collyer
SECTION ENGINEER

J. C. Collyer
ENGINEER OF DESIGN

(C)

(C)