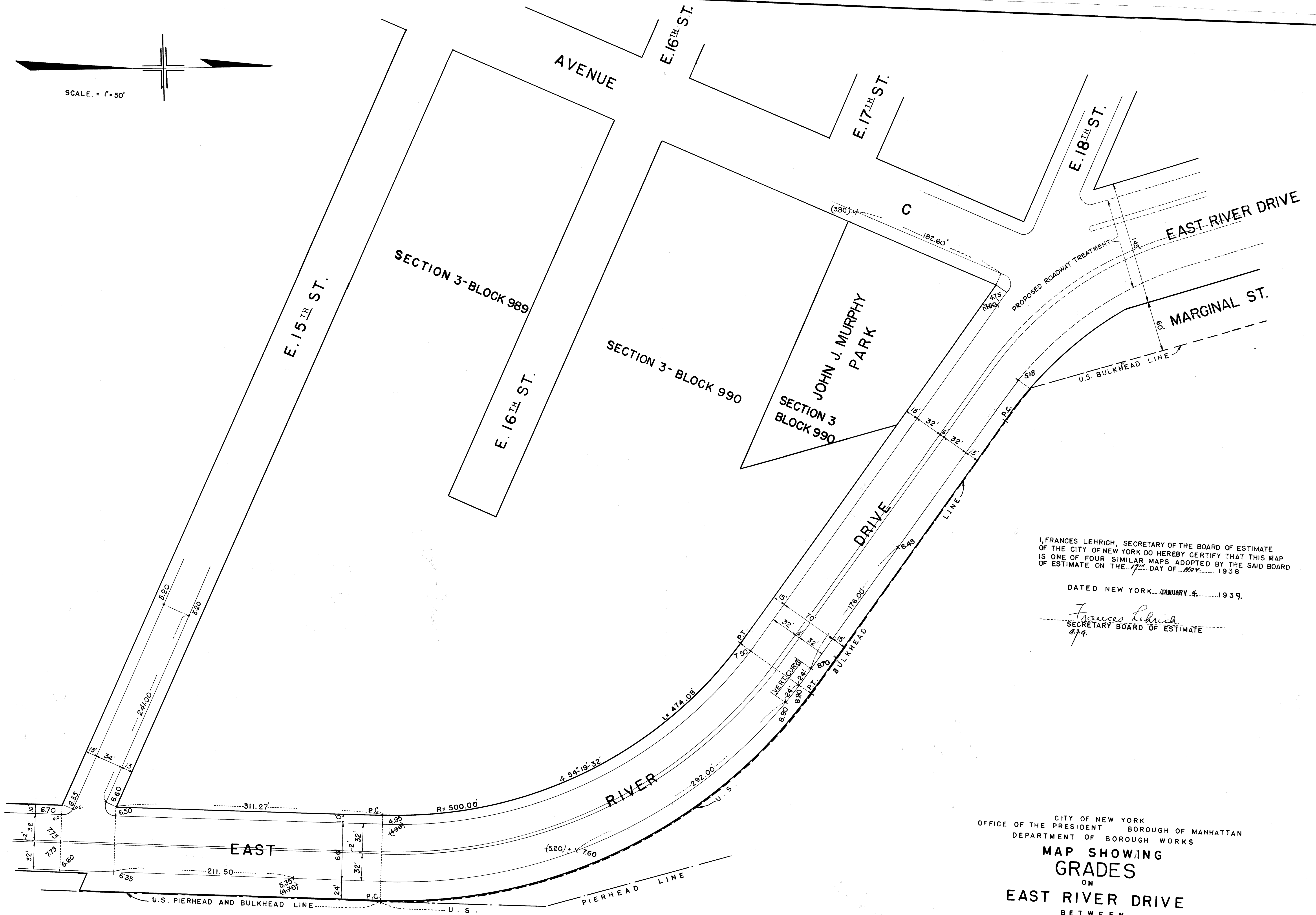


SCALE: 1" = 50'



I, FRANCES LEHRICH, SECRETARY OF THE BOARD OF ESTIMATE OF THE CITY OF NEW YORK DO HEREBY CERTIFY THAT THIS MAP IS ONE OF FOUR SIMILAR MAPS ADOPTED BY THE SAID BOARD OF ESTIMATE ON THE 7TH DAY OF NOV. 1938

DATED NEW YORK, JANUARY 4, 1939.

Frances Lehigh
SECRETARY BOARD OF ESTIMATE
479.

CITY OF NEW YORK
OFFICE OF THE PRESIDENT, BOROUGH OF MANHATTAN
DEPARTMENT OF BOROUGH WORKS
MAP SHOWING GRADES
ON
EAST RIVER DRIVE
BETWEEN
EAST 15TH STREET AND EAST 18TH STREET

DATED: MAY 27, 1938

Stanley H. Kohn
PRESIDENT, BOROUGH OF MANHATTAN

J. P. Hammond
CHIEF ENGINEER

W. D. King
COMMISSIONER OF BOROUGH WORKS

DRAWN BY: W.K.
CHECKED BY: G.S. DEER

W. K. [Signature]
SECTION ENGINEER

J. C. Collier
ENGINEER OF DESIGN

LEGEND

GRADES HEREBY ESTABLISHED ARE SHOWN BY VERTICAL RED FIGURES.
GRADES PREVIOUSLY ESTABLISHED AND HEREBY RETAINED ARE SHOWN BY VERTICAL BLACK FIGURES.
EXISTING SURFACE ELEVATIONS ARE SHOWN BY VERTICAL BLACK FIGURES ENCLOSED IN A PARENTHESIS, AND WHERE HEREBY DISCONTINUED ARE CROSSED BY A BLACK LINE.
ELEVATIONS SHOWN ON THIS MAP ARE REFERRED TO THE BOROUGH WORKS DATUM OF THE BOROUGH OF MANHATTAN WHICH IS 2.75 FEET ABOVE MEAN SEA.

Filed in files of the Board of Est.

18-32

(C)

(C)