

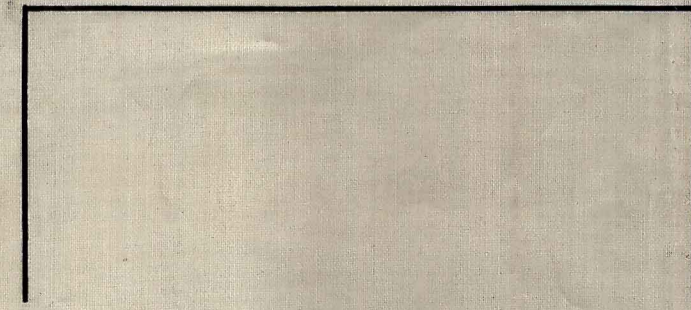
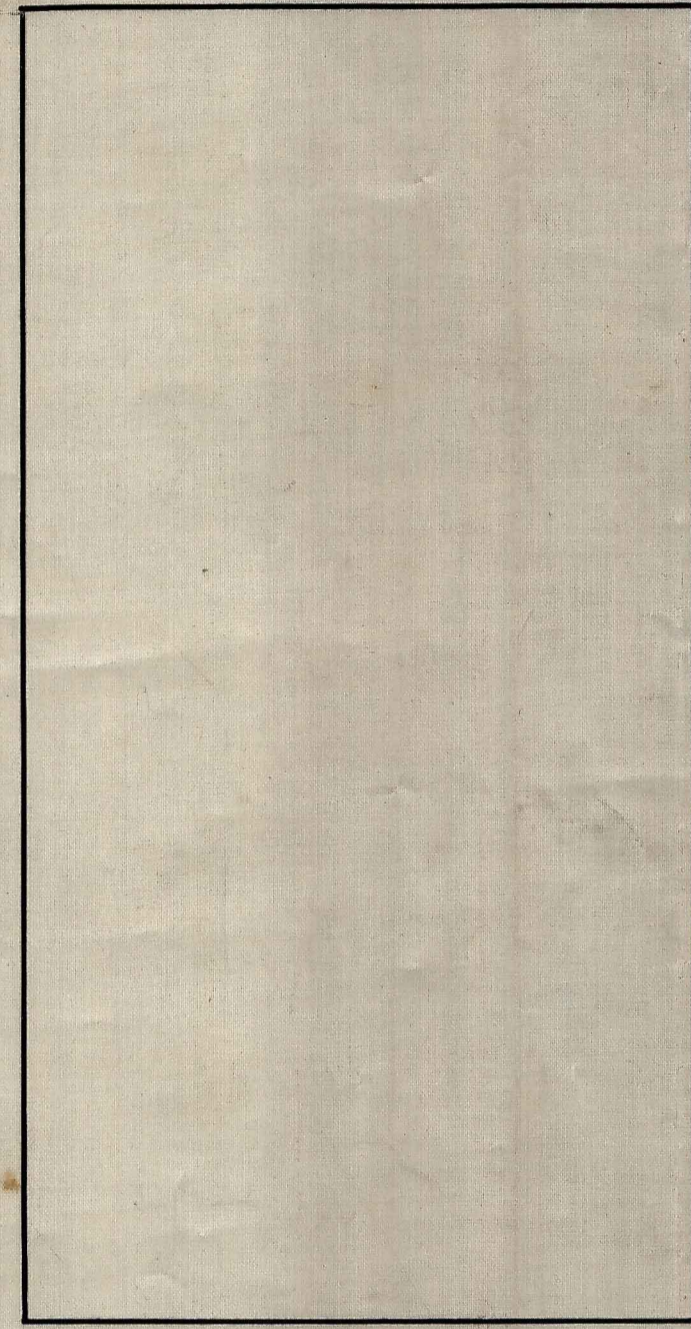
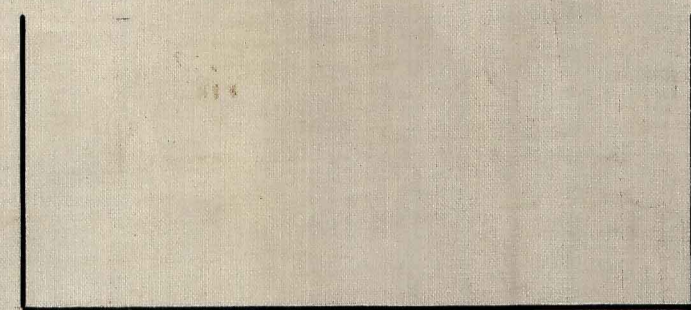
ESSEX STR.

CANAL STREET

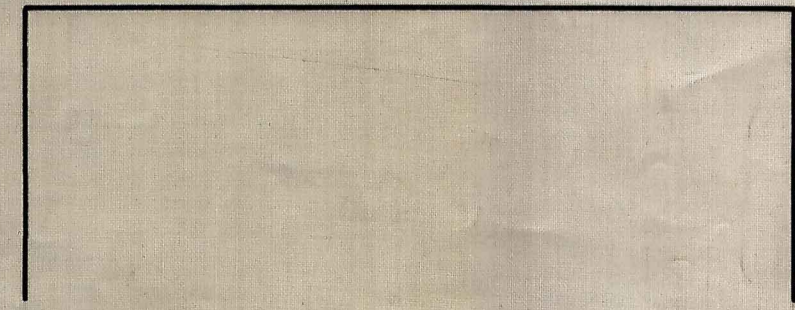
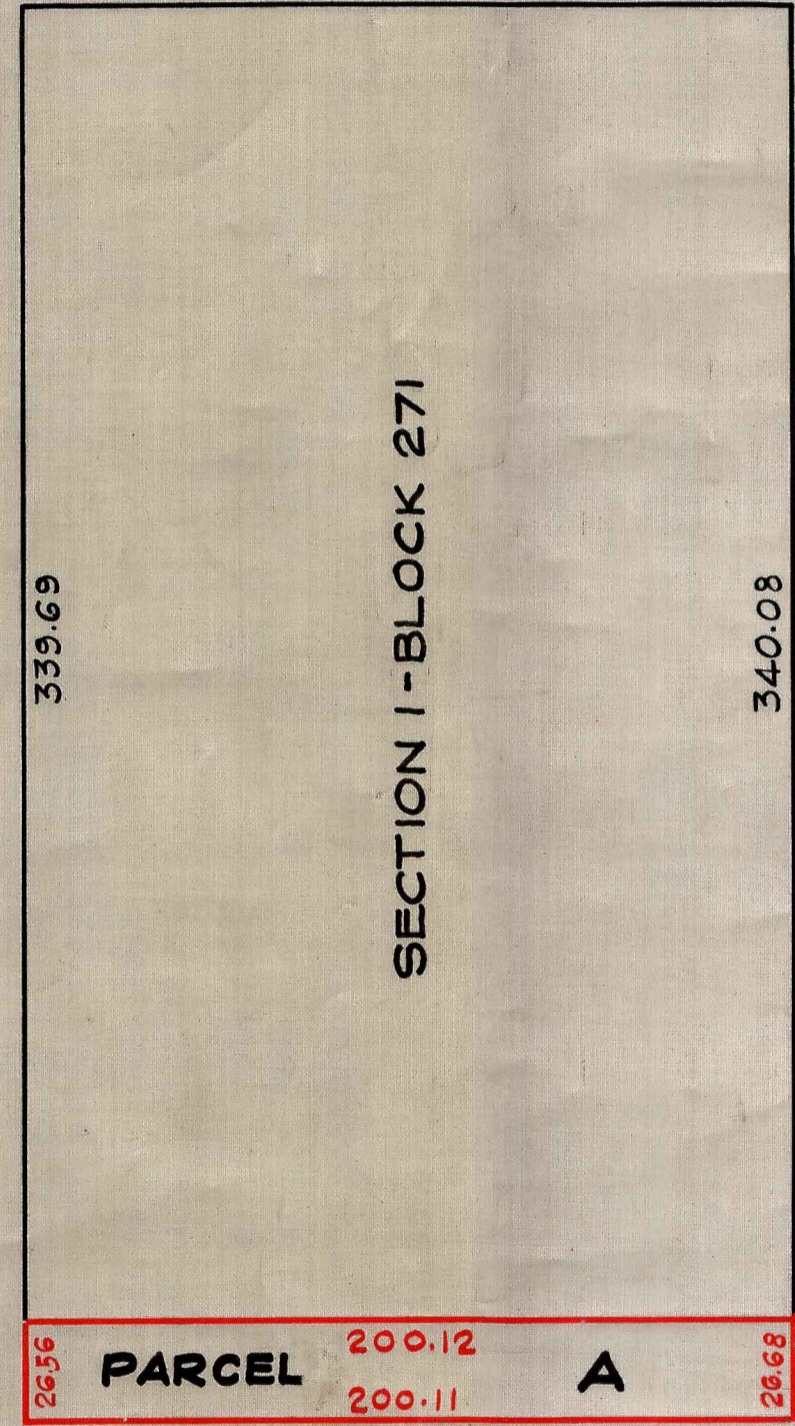
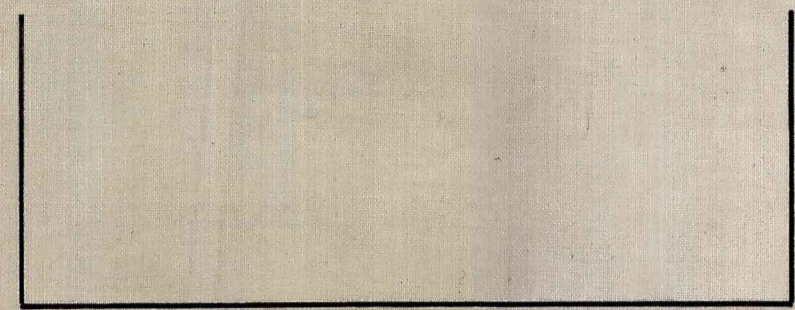
WM. H. SEWARD PARK

EAST BROADWAY

STRAUS SQUARE



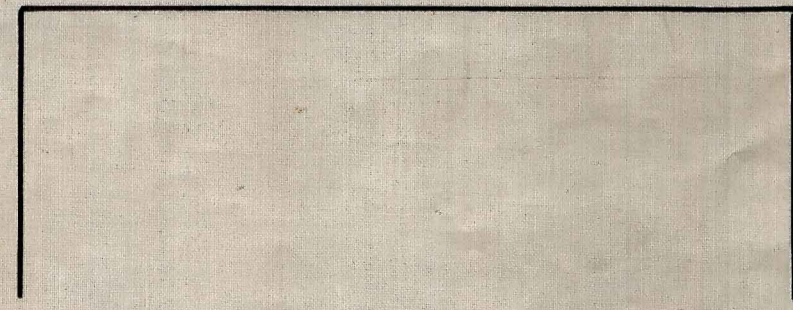
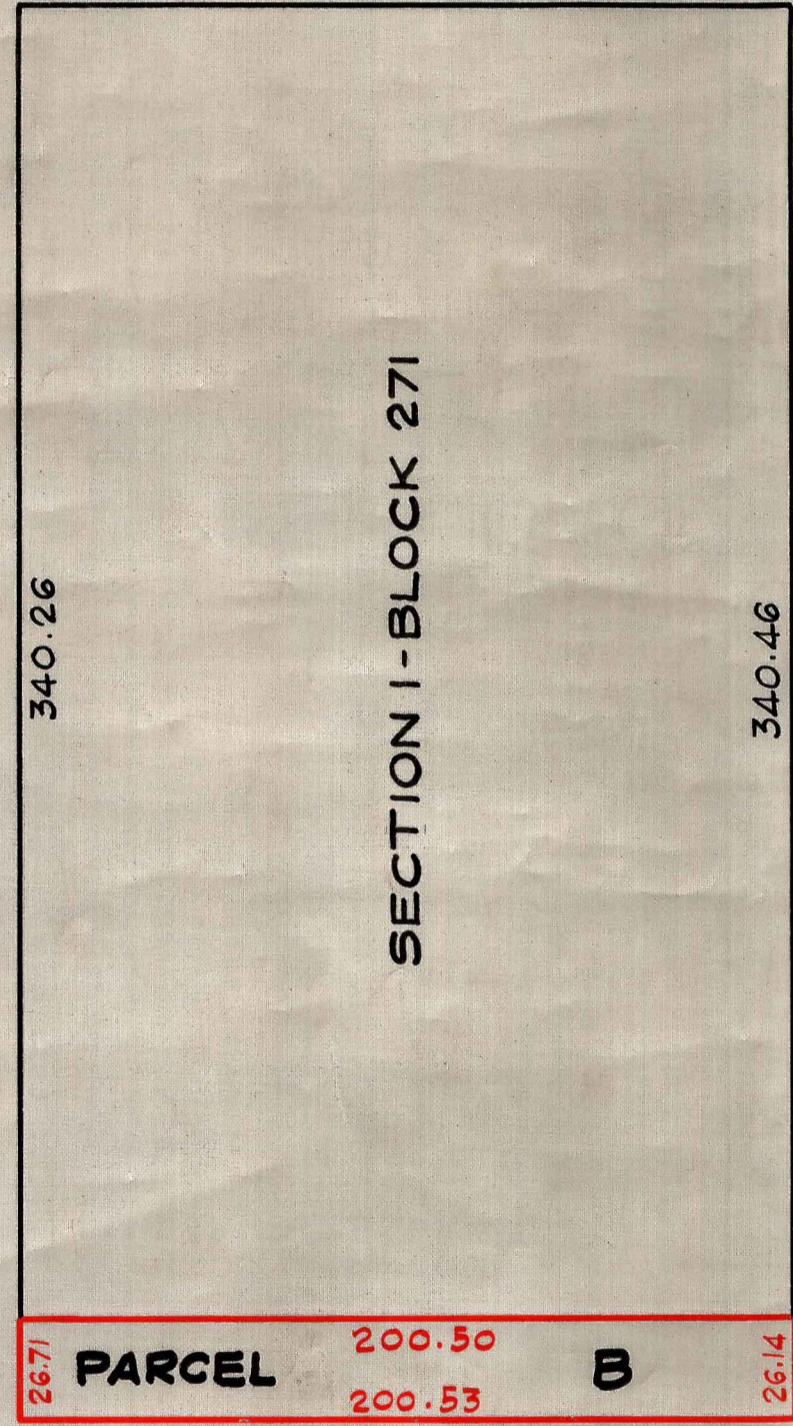
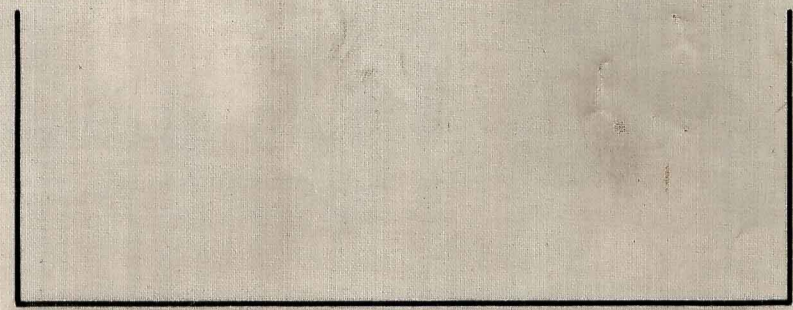
HENRY STREET



JEFFERSON STREET

RUTGERS STREET

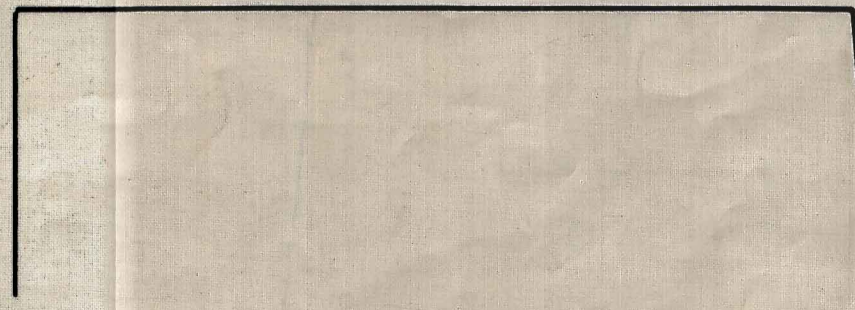
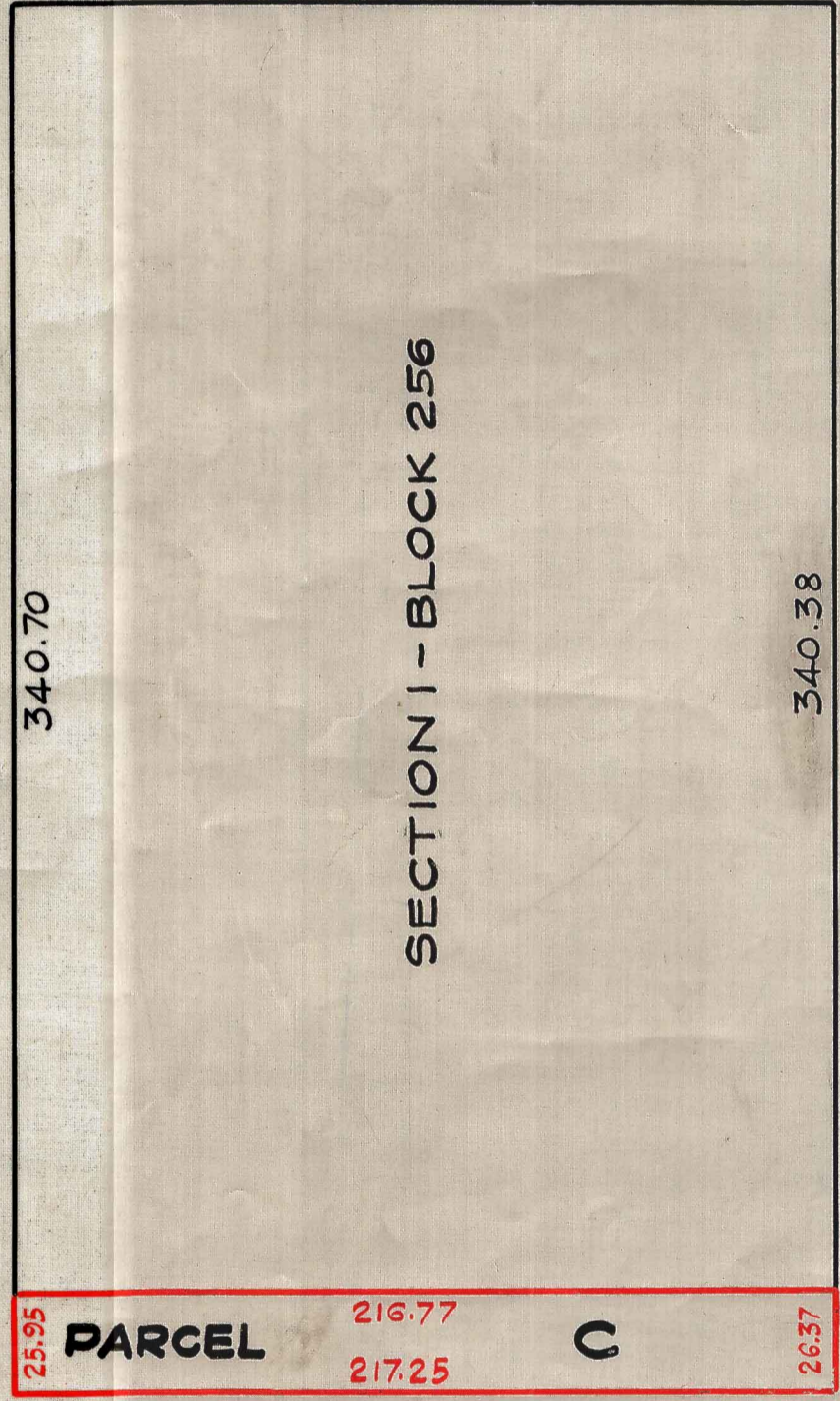
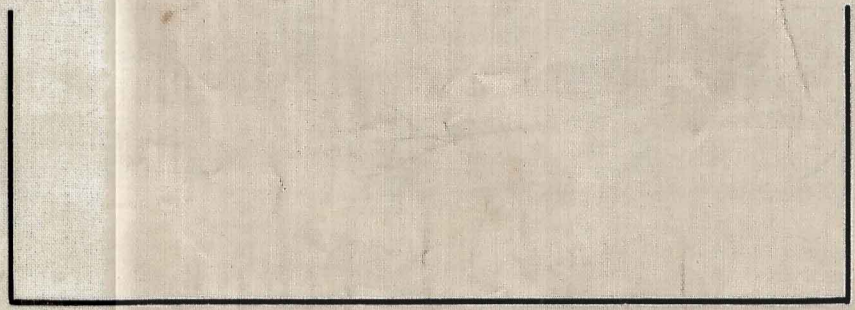
MADISON STREET



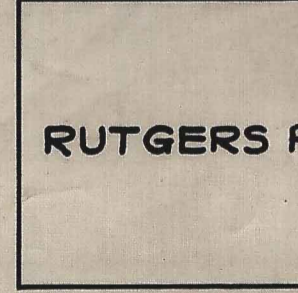
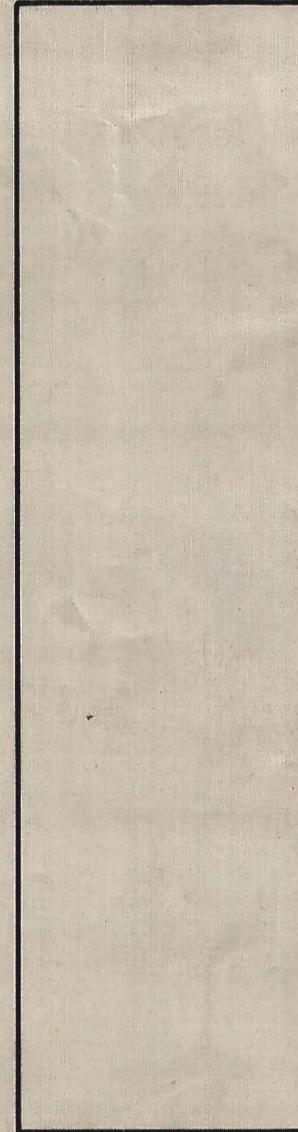
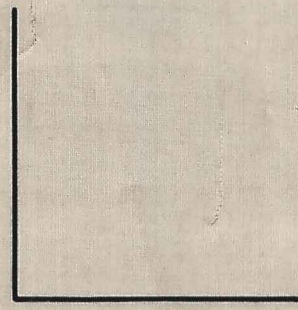
STREET

STREET

MONROE STREET



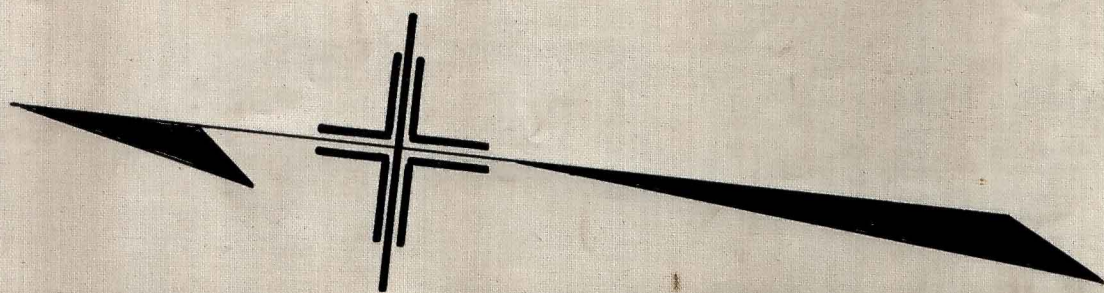
CHERRY STREET



RUTGERS SLIP

RUTGERS PARK

RUTGERS SLIP



CITY OF NEW YORK
BOROUGH OF MANHATTAN
OFFICE OF THE PRESIDENT
DEPARTMENT OF PUBLIC WORKS
BUREAU OF SEWERS AND HIGHWAYS

RULE MAP

IN THE MATTER OF ACQUIRING TITLE TO THE PROPERTY
REQUIRED FOR THE WIDENING OF
RUTGERS STREET

ON THE EASTERLY SIDE

FROM STRAUS SQUARE TO CHERRY STREET

WHERE NOT HERETOFORE ACQUIRED IN FEE BY THE
CITY OF NEW YORK FOR RAPID TRANSIT PURPOSES

BOROUGH OF MANHATTAN
CITY OF NEW YORK

APPROVED BY THE BOARD OF ESTIMATE AND APPORTIONMENT ON

SECRETARY OF THE BOARD OF
ESTIMATE AND APPORTIONMENT

DATED: NOVEMBER, 27, 1937

William J. ...
CHIEF ENGINEER

SCALE: 1"=50'

Samuel B. ...
PRESIDENT BOROUGH OF MANHATTAN