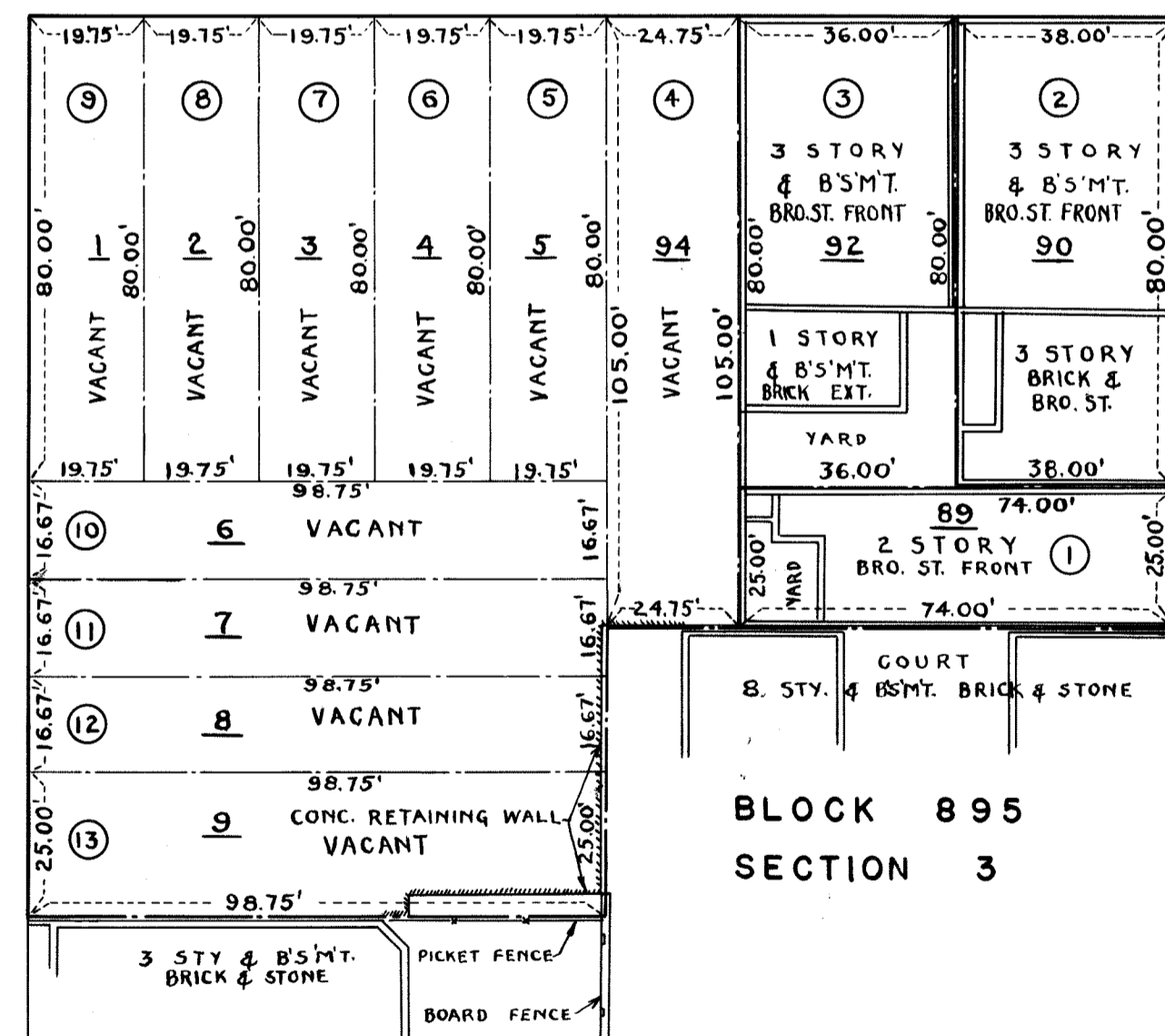


PARCEL NO.	BLOCK NO.	LOT NO.	AREA SQ.FT.	ASSESSED VALUATIONS						OWNER	REMARKS
				1935		1936		1937			
				LAND	IMPROVEMENT	LAND	IMPROVEMENT	LAND	IMPROVEMENT		
1	895	89	1850	60 000	13 000	60 000	13 000	60 000	13 000		
2	"	90	3040	240 000	30 000	240 000	30 000	240 000	30 000		
3	"	92	2880	190 000	30 000	190 000	20 000	190 000	20 000		
4	"	94	2598.75	150 000	—	150 000	—	150 000	—		
5	"	5	1580	85 000	—	85 000	—	85 000	—		
6	"	4	1580	85 000	1 000	85 000	1 000	85 000	1 000		
7	"	3	1580	85 000	2 000	85 000	2 000	85 000	2 000		
8	"	2	1580	87 000	2 000	87 000	2 000	87 000	2 000		
9	"	1	1580	140 000	—	140 000	—	140 000	—		
10	"	6	1645.86	35 000	—	35 000	—	33 000	—		
11	"	7	1645.86	35 000	—	35 000	—	33 000	—		
12	"	8	1645.86	35 000	—	35 000	—	33 000	—		
13	"	9	2468.75	52 500	—	52 500	—	50 000	—		

PARK AVENUE

E. 39<sup>TH</sup> STREET



LEGEND

LOT LINES SHOWN THUS ————  
 LOT NUMBERS SHOWN THUS ①  
 PARCEL NUMBERS SHOWN THUS ②

E. 40<sup>TH</sup> STREET

CITY OF NEW YORK      BOROUGH OF MANHATTAN  
 OFFICE OF THE PRESIDENT  
 DEPARTMENT OF PUBLIC WORKS  
 BUREAU OF SEWERS AND HIGHWAYS

**DAMAGE MAP**

IN THE MATTER OF ACQUIRING TITLE TO THE PROPERTY FOR THE  
**APPELLATE DIVISION COURTHOUSE SITE**  
 ON THE EAST SIDE OF  
**PARK AVENUE**  
 BETWEEN  
**EAST 39<sup>TH</sup> STREET AND EAST 40<sup>TH</sup> STREET**  
 IN THE BOROUGH OF MANHATTAN  
 CITY OF NEW YORK

— JUSTICE OF THE SUPREME COURT —

DATED: OCT. 6, 1937

SCALE: 1" = 30'

APPROVED BY THE BOARD OF ESTIMATE AND APPORTIONMENT ON.....

SECRETARY, BOARD OF ESTIMATE AND APPORTIONMENT.

*Charles E. ...*  
 CHIEF ENGINEER

*Samuel ...*  
 PRESIDENT, BOROUGH OF MANHATTAN

FILE NO. 3.2

Acc. No. 27620

Owner 13