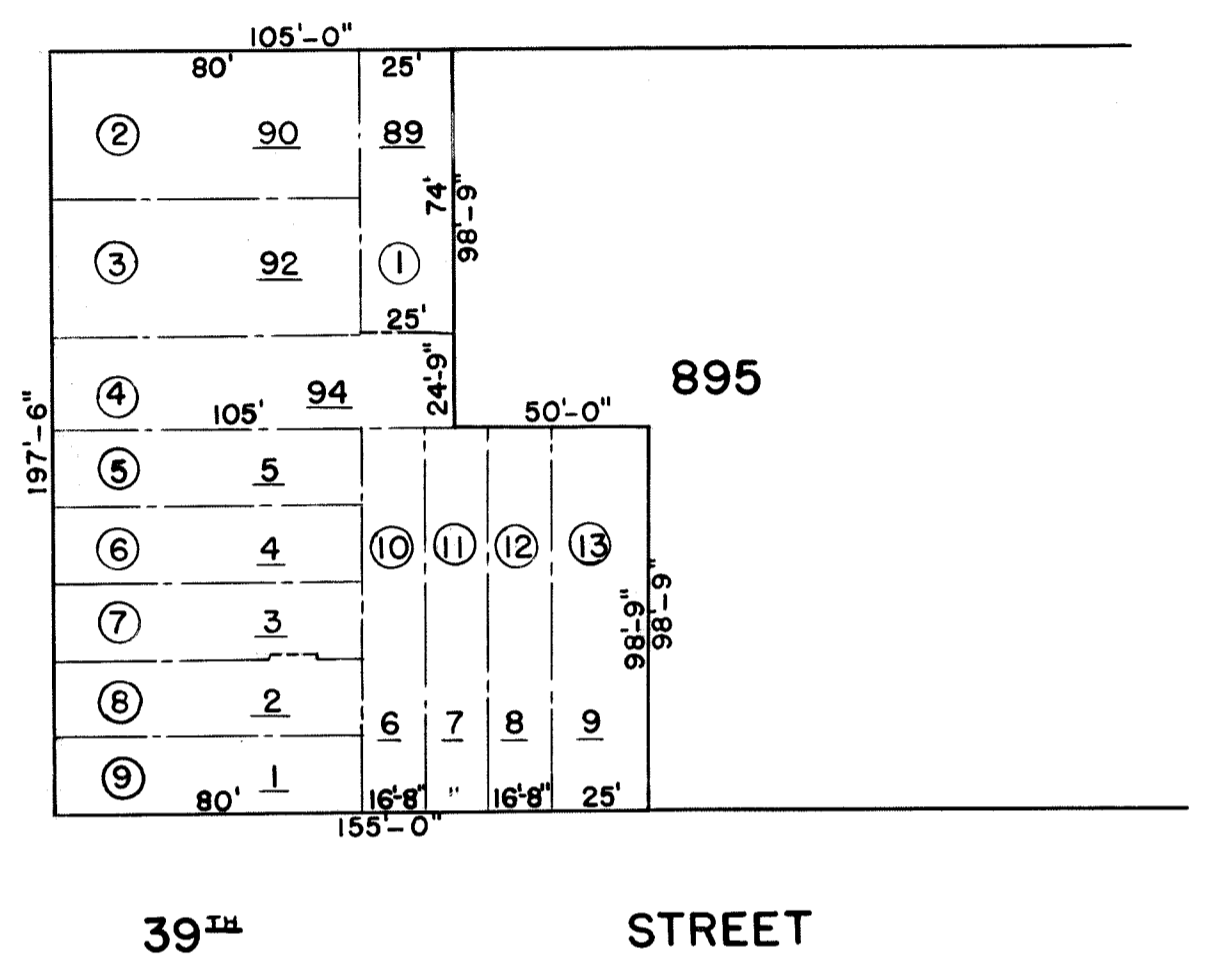


PARK AVENUE



PARCEL NO.	BLOCK NO.	LOT NO.	ASSESSED VALUATIONS					
			1935		1936		1937	
			LAND	IMPROVEMENT	LAND	IMPROVEMENT	LAND	IMPROVEMENT
1	895	89	60 000	13 000	60 000	13 000	60 000	13 000
2	"	90	240 000	30 000	240 000	30 000	240 000	30 000
3	"	92	190 000	30 000	190 000	20 000	190 000	20 000
4	"	94	150 000	—	150 000	—	150 000	—
5	"	5	85 000	—	85 000	—	85 000	—
6	"	4	85 000	1 000	85 000	1 000	85 000	1 000
7	"	3	85 000	2 000	85 000	2 000	85 000	2 000
8	"	2	87 000	2 000	87 000	2 000	87 000	2 000
9	"	1	140 000	—	140 000	—	140 000	—
10	"	6	35 000	—	35 000	—	33 000	—
11	"	7	35 000	—	35 000	—	33 000	—
12	"	8	35 000	—	35 000	—	33 000	—
13	"	9	52 500	—	52 500	—	50 000	—

CITY OF NEW YORK BOROUGH OF MANHATTAN
OFFICE OF THE PRESIDENT
DEPARTMENT OF PUBLIC WORKS
BUREAU OF SEWERS AND HIGHWAYS

MAP OF PROPERTY
ON THE
EAST SIDE OF PARK AVENUE BETWEEN E. 39TH ST. AND E. 40TH ST.
IN THE
BOROUGH OF MANHATTAN
SELECTED BY THE BOARD OF JUSTICES OF THE APPELLATE DIVISION OF
THE SUPREME COURT, FIRST DEPARTMENT
AS A SITE FOR
APPELLATE DIVISION COURT HOUSE

DATED: JUNE 9, 1937 SCALE: 1" = 50'

Charles S. ...
CHIEF ENGINEER

Samuel ...
PRESIDENT OF BOROUGH OF MANHATTAN

LEGEND

PROPERTY TO BE ACQUIRED BOUNDED BY RED LINES
LOT LINES SHOWN THUS
LOT NUMBERS SHOWN THUS
PARCEL NUMBERS SHOWN THUS

DRAWN BY T.P.L.
CHECKED BY M.K.

T.P.L.
SECTION ENGINEER

F.A. Collier
ENGINEER OF DESIGN

Drawn 13

FILE 93.2 A.C. 27569

B