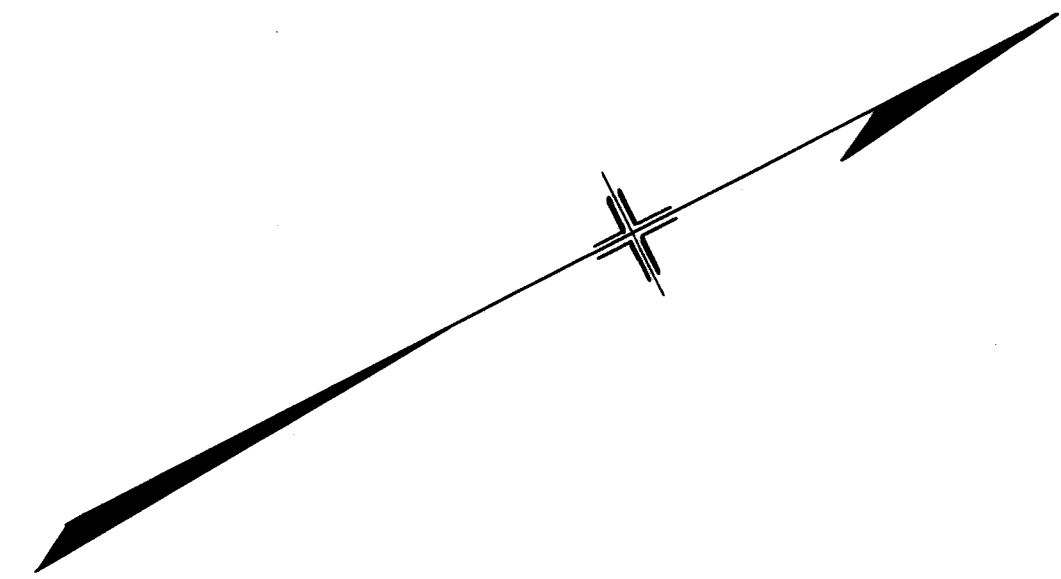
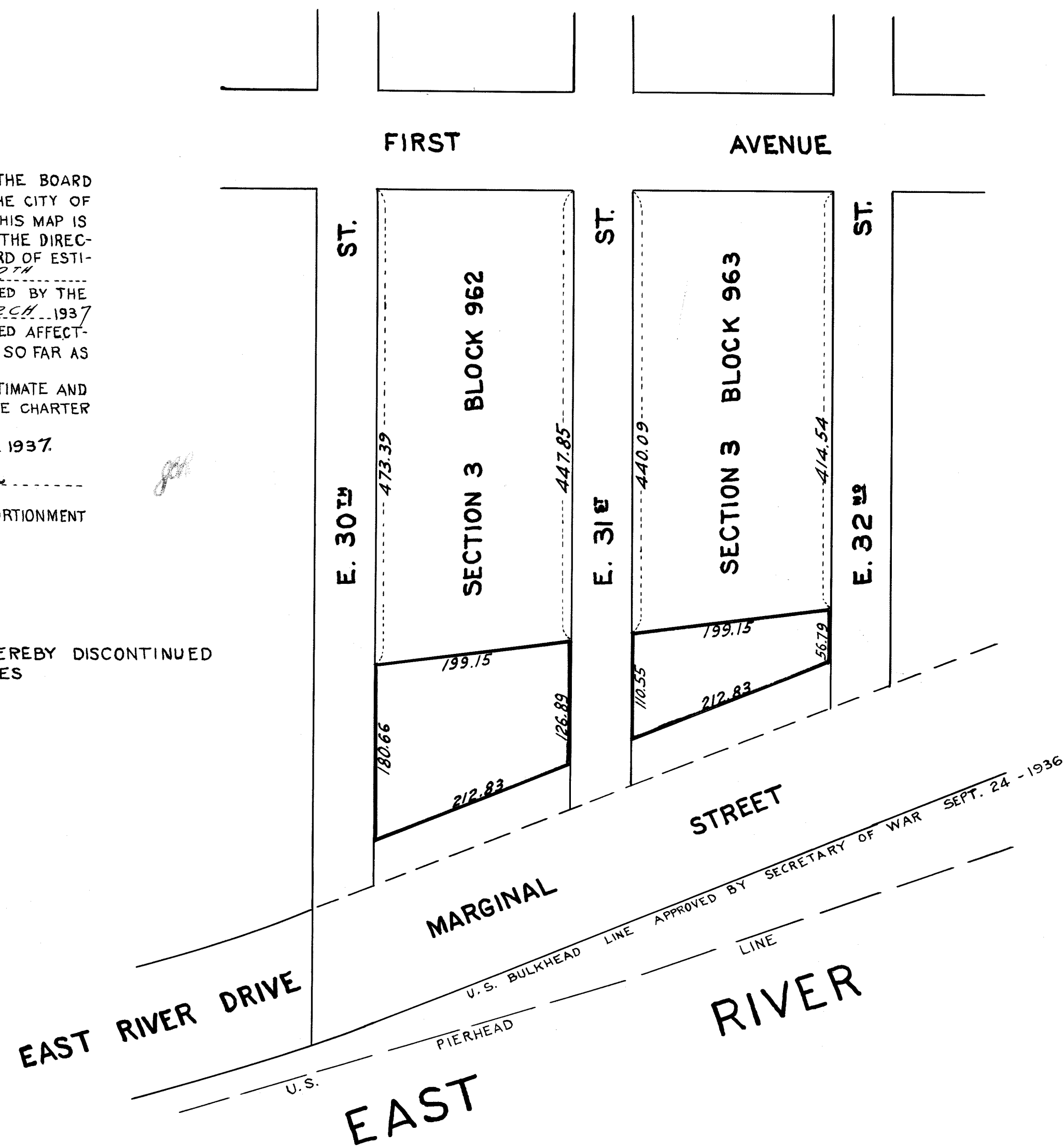


I, PEARL BERNSTEIN, SECRETARY OF THE BOARD OF ESTIMATE AND APPORTIONMENT OF THE CITY OF NEW YORK DO HEREBY CERTIFY THAT THIS MAP IS ONE OF FOUR SIMILAR MAPS MADE AT THE DIRECTION OF AND ADOPTED BY THE SAID BOARD OF ESTIMATE AND APPORTIONMENT ON THE 12TH DAY OF MARCH 1937 AND APPROVED BY THE MAYOR ON THE 12TH DAY OF MARCH 1937 SUPERSEDING ALL MAPS HERETOFORE FILED AFFECTING THE AREA EMBRACED BY SAID MAP IN SO FAR AS IT MAKES ANY CHANGES THEREIN.
 PREPARED FOR THE BOARD OF ESTIMATE AND APPORTIONMENT UNDER AUTHORITY OF THE CHARTER OF THE CITY OF NEW YORK DATED NEW YORK April 1, 1937.
Pearl Bernstein
 SECRETARY
 BOARD OF ESTIMATE AND APPORTIONMENT

— LEGEND —
 ADDITIONAL LANDS HEREBY DISCONTINUED
 BOUNDED BY RED LINES



CITY OF NEW YORK BOROUGHS OF MANHATTAN
 OFFICE OF THE PRESIDENT
 DEPARTMENT OF PUBLIC WORKS
 BUREAU OF SEWERS AND HIGHWAYS
**MAP SHOWING
 ADDITIONAL LANDS
 TO BE DISCONTINUED
 ALONG THE EAST RIVER
 BETWEEN EAST 30TH STREET AND EAST 32ND STREET**
 AS SHOWN ON MAP ADOPTED BY THE BOARD OF
 ESTIMATE AND APPORTIONMENT ON JUNE 5-1936

DATED FEB. 19, 1937

SCALE: 1"=100'

DRAWN BY R.H.B.
 CHECKED BY S.W.
R.H.B.
 SECTION ENGINEER

J.P. Collyer
 ENGINEER OF DESIGN

APPROVED

F.H. LA GUARDIA
 MAYOR OF THE CITY OF NEW YORK

W. P. ...
 CHIEF ENGINEER

Samuel ...
 PRESIDENT BORO. OF MANHATTAN

FILE NO 852

ACC. NO 27538

Drawn 13

Filed in the Office of the Borough Engineer
 East Manhattan 4/9/37

B