

I, PEARL BERNSTEIN, SECRETARY OF THE BOARD OF ESTIMATE AND APPORTIONMENT OF THE CITY OF NEW YORK DO HEREBY CERTIFY THAT THIS MAP IS ONE OF FOUR SIMILAR MAPS MADE AT THE DIRECTION OF AND ADOPTED BY THE SAID BOARD OF ESTIMATE AND APPORTIONMENT ON THE 5<sup>TH</sup> DAY OF June 1936 AND APPROVED BY THE MAYOR ON THE 5<sup>TH</sup> DAY OF June 1936 SUPERSADING ALL MAPS HERETOFORE FILED AFFECTING THE AREA EMBRACED BY SAID MAP IN SO FAR AS IT MAKES ANY CHANGES THEREIN

PREPARED FOR THE BOARD OF ESTIMATE AND APPORTIONMENT UNDER AUTHORITY OF THE CHARTER OF THE CITY OF NEW YORK DATED NEW YORK October 30 1936

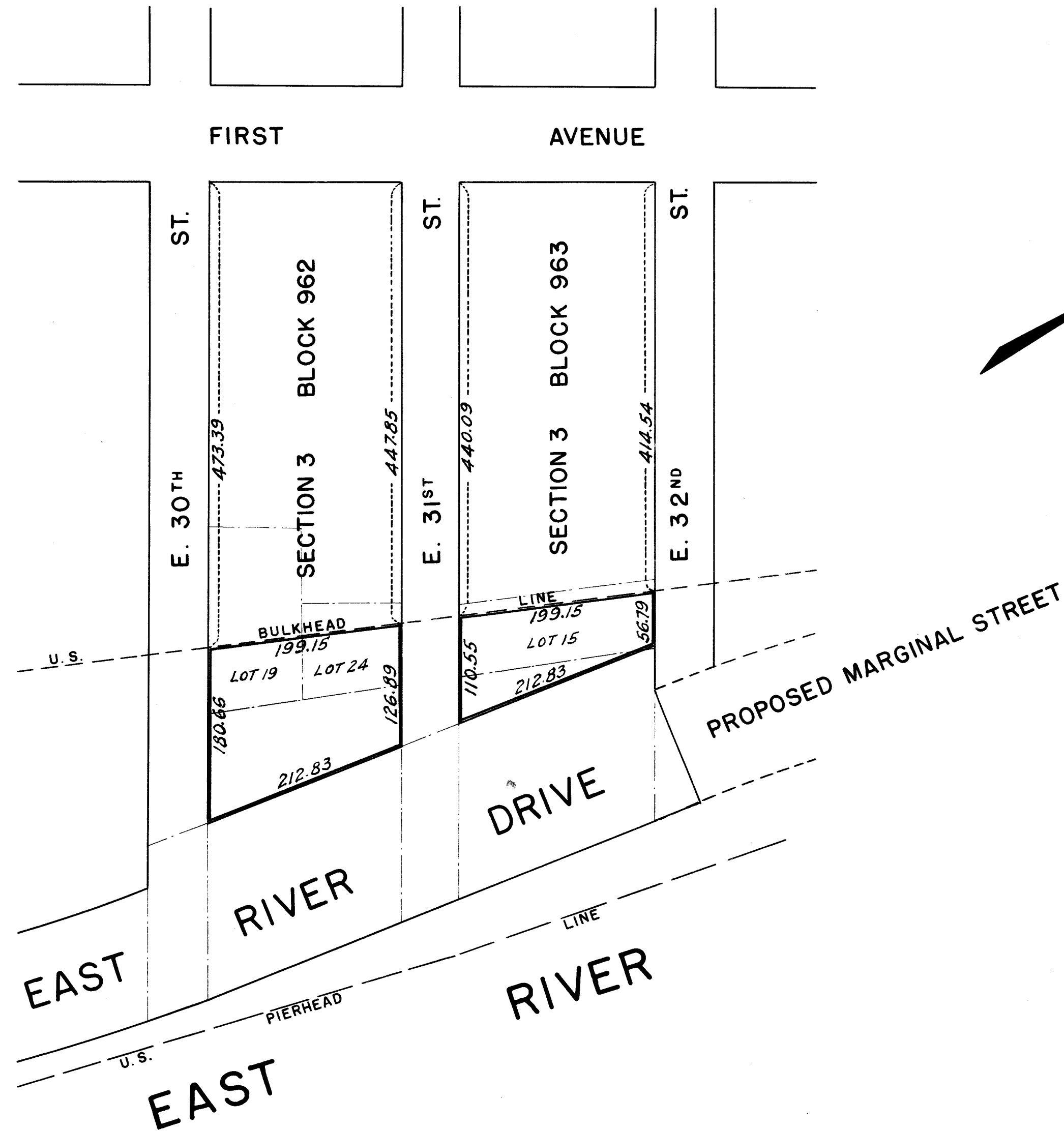
Pearl Bernstein  
SECRETARY.  
BOARD OF ESTIMATE AND APPORTIONMENT

LEGEND

PROPERTY SUB-DIVISION LINES ARE SHOWN BY A DOT AND DASH LINE.

ADDITIONAL LANDS TO BE ACQUIRED ARE SHOWN ENCLOSED BY A FULL RED LINE AND ARE COLORED RED.

LANDS TO BE ACQUIRED FOR STREET PURPOSES FOR EAST RIVER DRIVE ARE COLORED YELLOW.



CITY OF NEW YORK BOROUGHS OF MANHATTAN  
OFFICE OF THE PRESIDENT  
DEPARTMENT OF PUBLIC WORKS  
BUREAU OF ENGINEERING

MAP SHOWING  
ADDITIONAL LANDS  
BETWEEN EAST 30<sup>TH</sup> STREET AND EAST 32<sup>ND</sup> STREET  
TO BE ACQUIRED IN ADDITION TO  
THE REAL PROPERTY REQUIRED FOR  
EAST RIVER DRIVE

BETWEEN  
EAST 14<sup>TH</sup> STREET AND EAST 32<sup>ND</sup> STREET  
AND BETWEEN  
EAST 49<sup>TH</sup> STREET AND EAST 54<sup>TH</sup> STREET

DATED JAN. 30, 1936

SCALE: 1" = 100'

Charles P. ...  
CHIEF ENGINEER

Robert ...  
PRESIDENT BORO. OF MANHATTAN

FILE NO. 2

ACC. NO. 27476

DRAWN BY WW.  
CHECKED BY: MG

J. ...  
SECTION ENGINEER

J. ...  
ENGINEER OF DESIGN

APPROVED

F. LA GUARDIA  
MAYOR OF THE CITY OF NEW YORK

October 13

Filed in Office of County Clerk  
Manhattan 11/2/36