

SHEET NO. 1.  
SHEETS IN SET 0

**EAST RIVER DRIVE**  
**E. 92<sup>ND</sup> ST. TO E. 122<sup>ND</sup> ST.**  
**FIELD DATA FOR CONSTRUCTION**  
 FEB. 24, 1936.

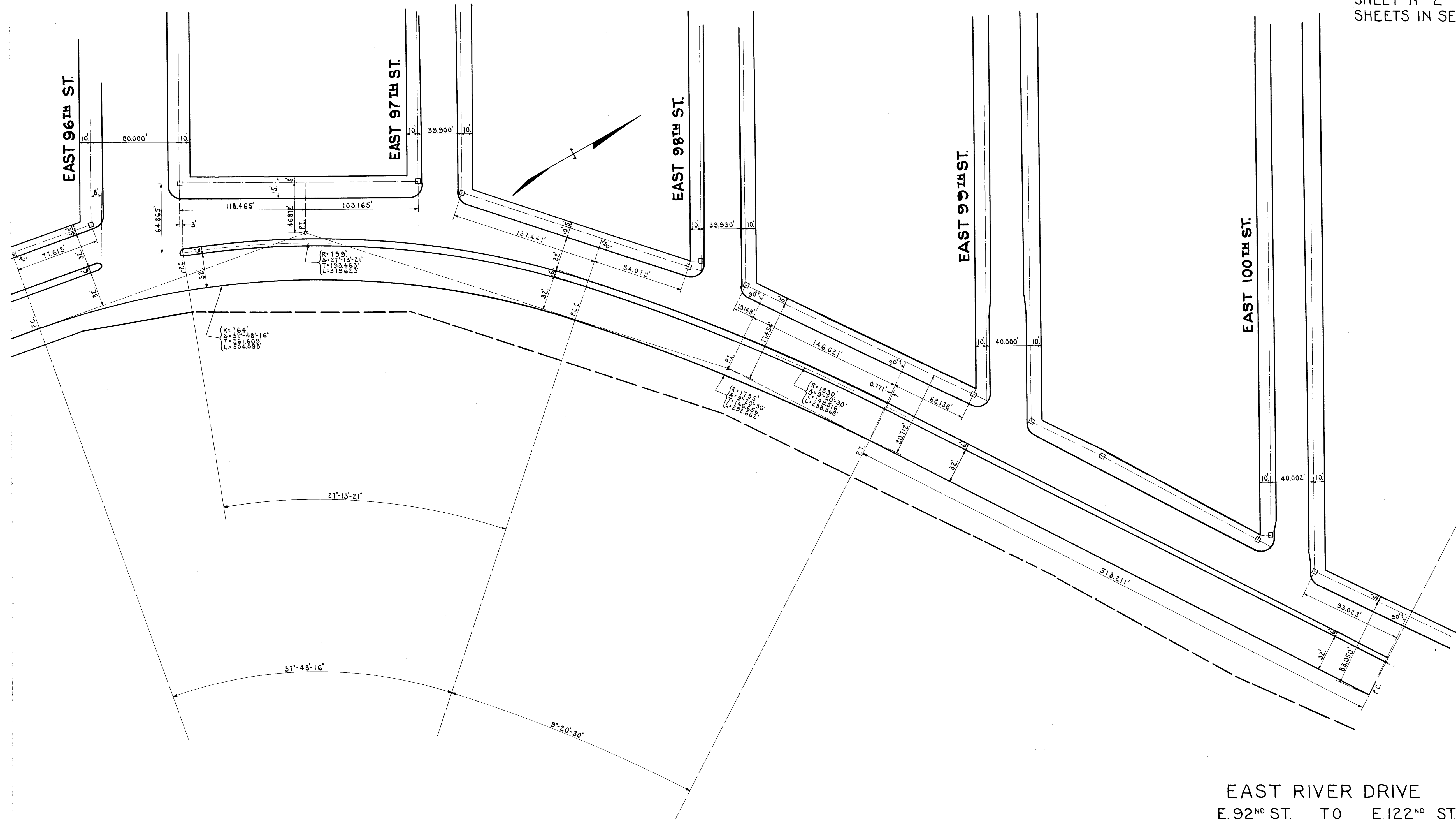
DRAWN BY H.H.R.  
CHECKED BY EES.

*Plan 13*

FILE NO. 85.2

Acc. 27459

**B**



EAST RIVER DRIVE  
E. 92<sup>ND</sup> ST. TO E. 122<sup>ND</sup> ST.  
FIELD DATA FOR CONSTRUCTION  
MARCH 14, 1936.

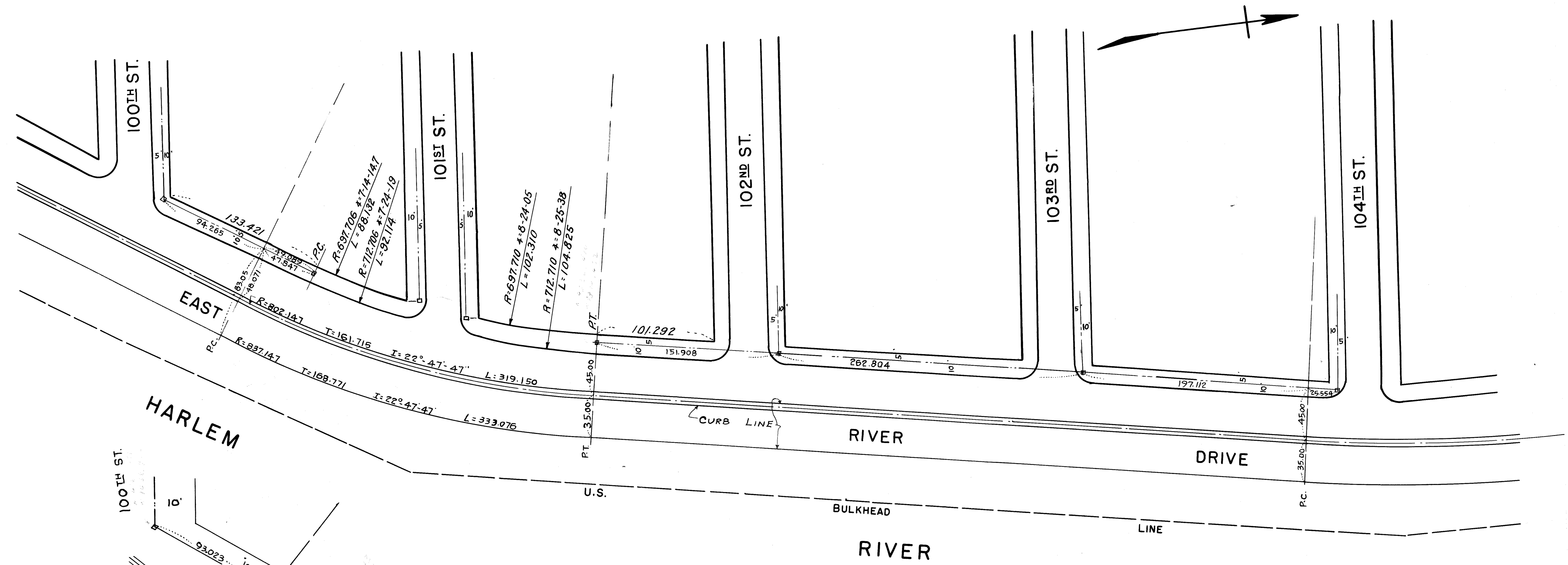
DRAWN BY H.H.R.  
CHECKED BY

*Drawn 13*

FILE No. 85.2

Acc. 27459

(B)



DRAWN BY L.K.  
CHECKED BY H.N.K

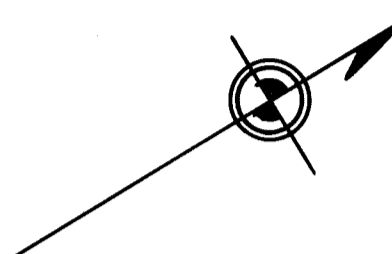
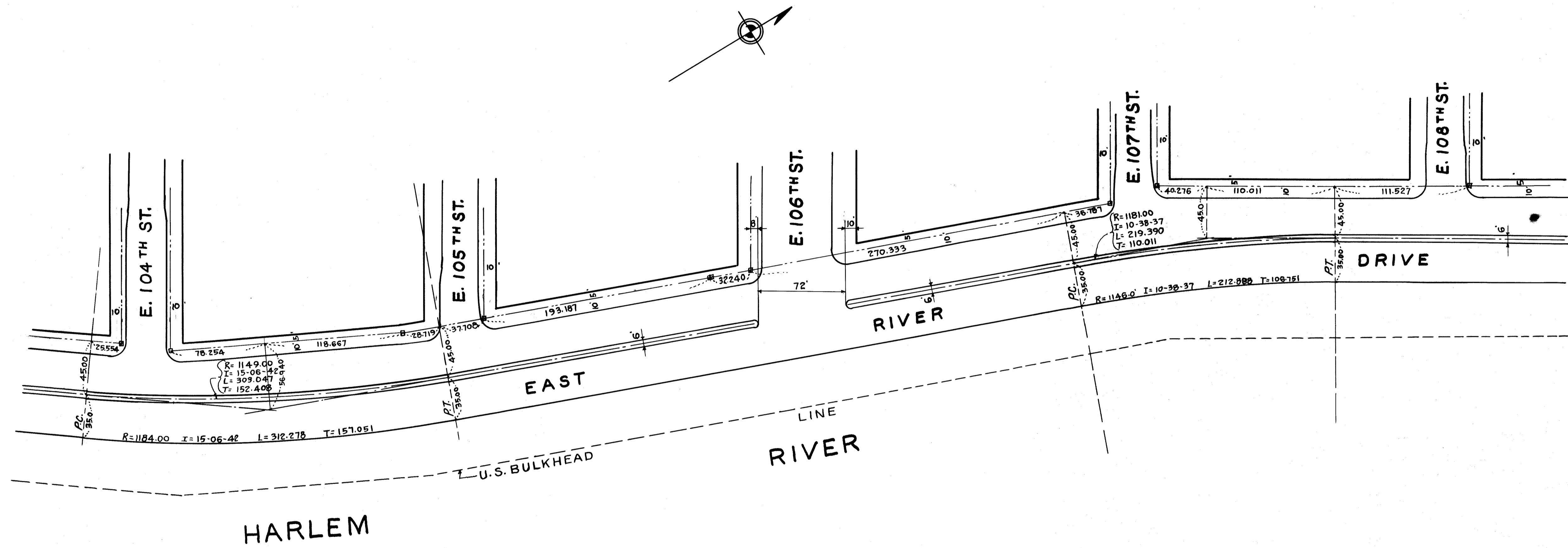
**EAST RIVER DRIVE**  
E. 92<sup>ND</sup> ST. TO E. 122<sup>ND</sup> ST.  
FIELD DATA FOR CONSTRUCTION  
MARCH 9-1936

*Drawn 13*

FILE NO. 85.2

Acc. 274-59

(B)



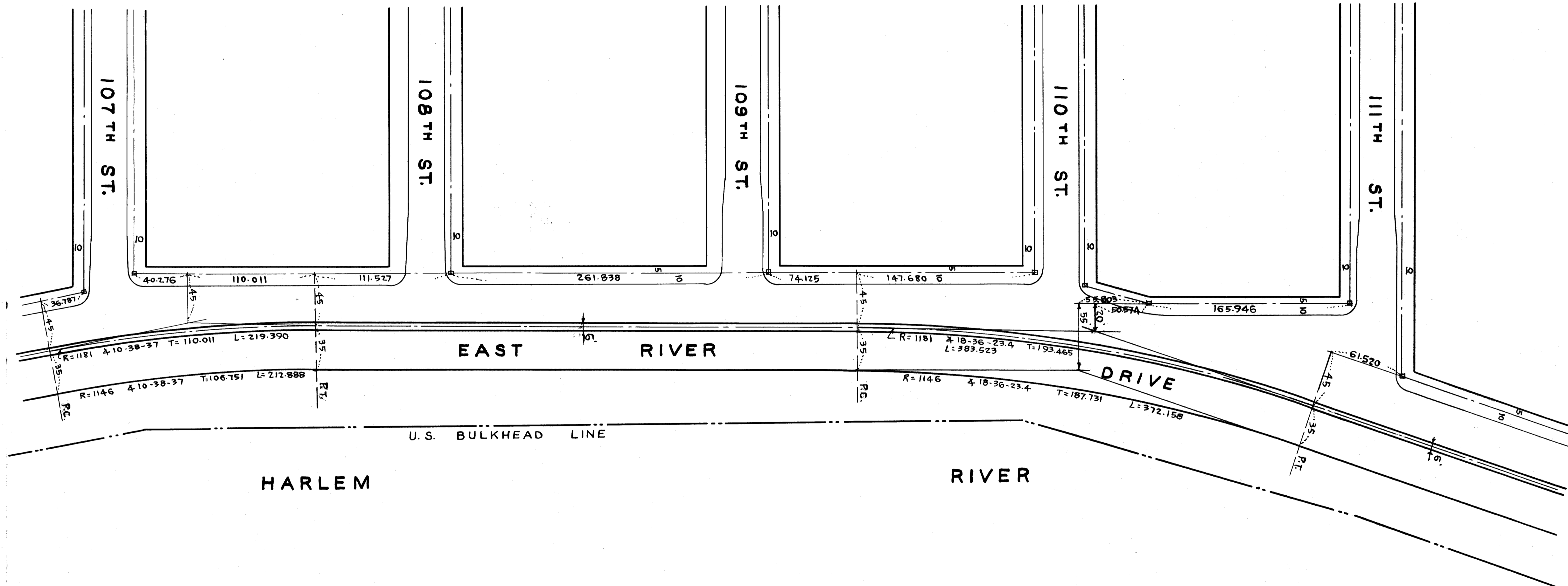
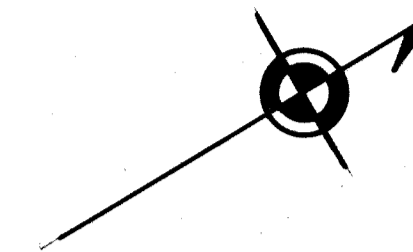
DRAWN BY H.N.K. & L.K.  
CHECKED BY H.N.K.

**EAST RIVER DRIVE**  
E. 92<sup>ND</sup> ST. TO E. 122<sup>ND</sup> ST.  
FIELD DATA FOR CONSTRUCTION  
MAR. 4, 1936

*Drawn 13*

FILE NO. 85.2

Acc. 27459 B



DRAWN BY H.N.K.; L.K.  
CHECKED BY H.N.K.

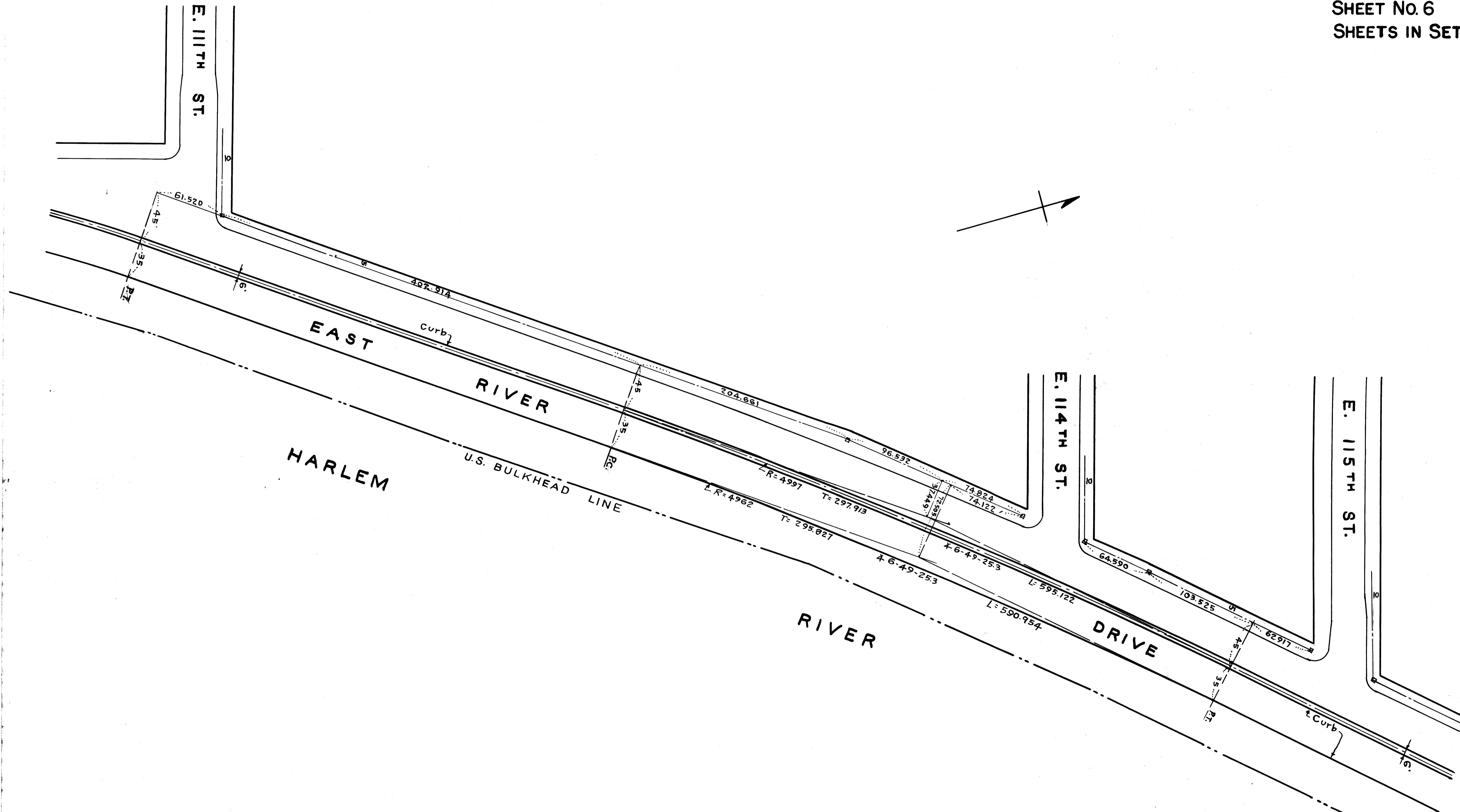
**EAST RIVER DRIVE**  
**E. 92<sup>ND</sup> ST. TO E. 122<sup>ND</sup> ST.**  
**FIELD DATA FOR CONSTRUCTION**  
APRIL 1, 1936

Drawn 13

File No. 85.2

Acc. 27459





DRAWN BY L.K.  
CHECKED BY H.N.K.

*Drawn 13*

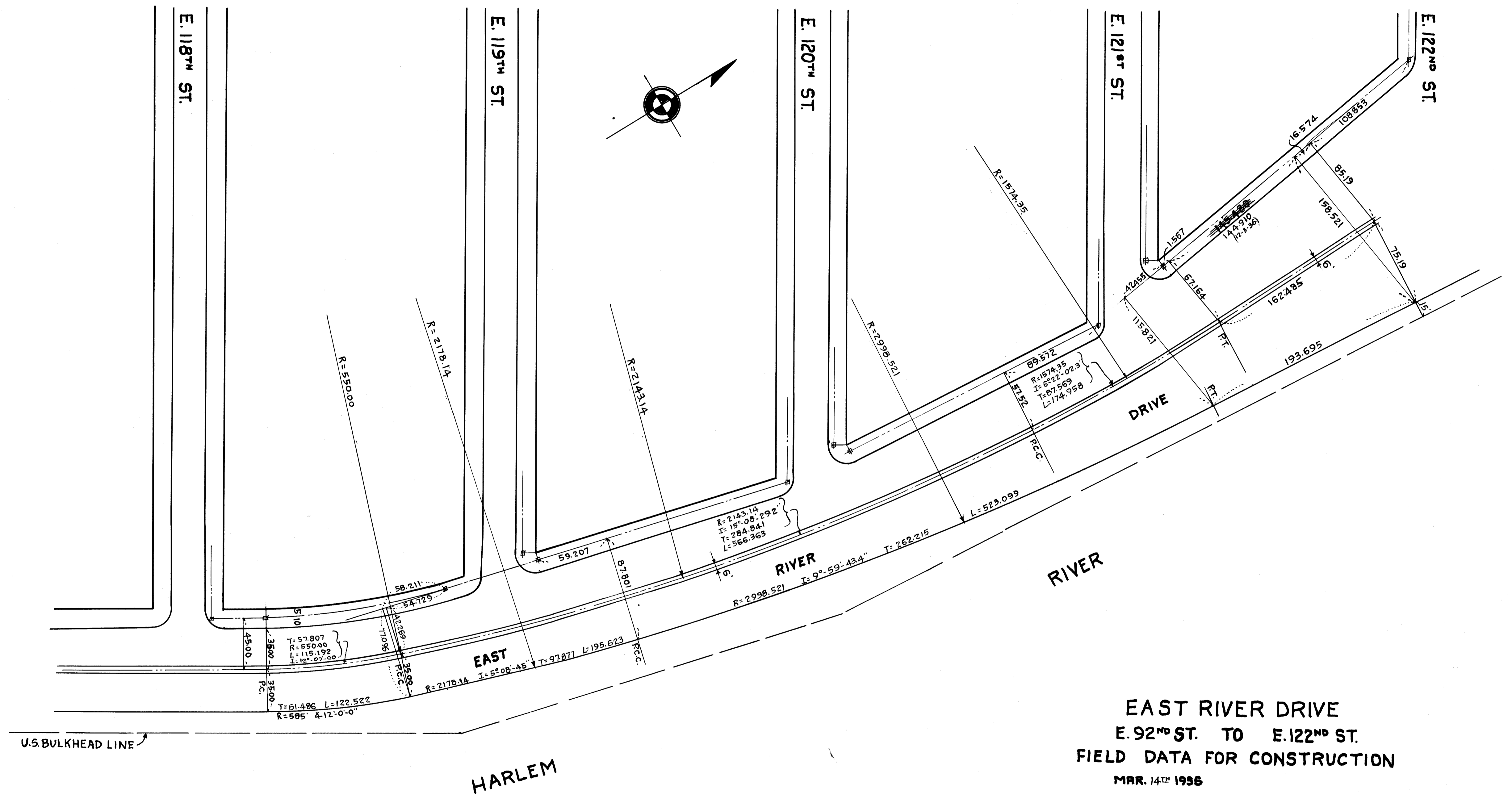
EAST RIVER DRIVE  
E. 92<sup>ND</sup> ST. TO E. 122<sup>ND</sup> ST.  
FIELD DATA FOR CONSTRUCTION  
APRIL 2, 1936

FILE No. 85.2

Acc. 27459

(B)





EAST RIVER DRIVE  
E. 92<sup>ND</sup> ST. TO E. 122<sup>ND</sup> ST.  
FIELD DATA FOR CONSTRUCTION  
MAR. 14<sup>TH</sup> 1936

DRAWN BY L. KRAMER  
CHECKED BY H. N. K.

Drawn 13

FILE NO. 85.2

Acc. 274-59

(B)