

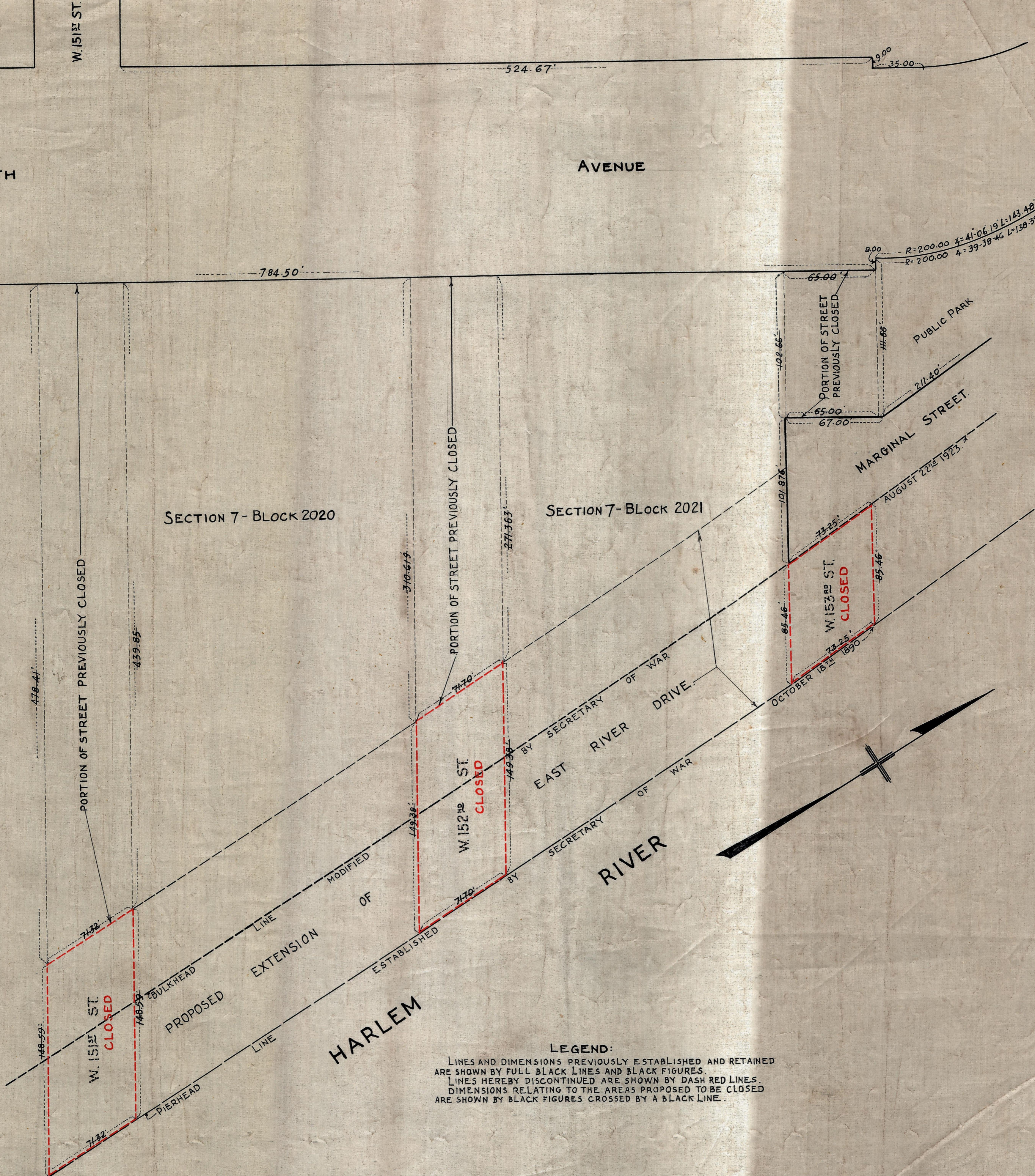
WEST 150<sup>TH</sup> STREET

SEVENTH AVENUE

SECTION 7 - BLOCK 2019

SECTION 7 - BLOCK 2020

SECTION 7 - BLOCK 2021



**LEGEND:**  
 LINES AND DIMENSIONS PREVIOUSLY ESTABLISHED AND RETAINED ARE SHOWN BY FULL BLACK LINES AND BLACK FIGURES.  
 LINES HEREBY DISCONTINUED ARE SHOWN BY DASH RED LINES.  
 DIMENSIONS RELATING TO THE AREAS PROPOSED TO BE CLOSED ARE SHOWN BY BLACK FIGURES CROSSED BY A BLACK LINE.

I, PEARL BERNSTEIN, SECRETARY OF THE BOARD OF ESTIMATE AND APPORTIONMENT OF THE CITY OF NEW YORK DO HEREBY CERTIFY THAT THIS MAP IS ONE OF THREE SIMILAR MAPS MADE AT THE DIRECTION OF, AND ADOPTED BY THE SAID BOARD OF ESTIMATE AND APPORTIONMENT ON THE 19<sup>TH</sup> DAY OF JULY, 1936 AND APPROVED BY THE MAYOR ON THE 29<sup>TH</sup> DAY OF JULY, 1936 SUPERSEDING ALL MAPS HERETOFORE FILED AFFECTING THE AREA EMBRACED BY SAID MAP IN SO FAR AS IT MAKES ANY CHANGES THEREIN PREPARED FOR THE BOARD OF ESTIMATE AND APPORTIONMENT UNDER AUTHORITY OF THE CHARTER OF THE CITY OF NEW YORK, DATED NEW YORK JULY 23, 1936.

*Pearl Bernstein*  
 SECRETARY  
 BOARD OF ESTIMATE AND APPORTIONMENT

CITY OF NEW YORK - BOROUGH OF MANHATTAN  
 OFFICE OF THE PRESIDENT  
 DEPARTMENT OF PUBLIC WORKS  
 BUREAU OF ENGINEERING

MAP SHOWING A CHANGE IN THE STREET SYSTEM  
 BY CLOSING  
 THE REMAINING PORTIONS OF  
**WEST 151<sup>ST</sup> STREET, WEST 152<sup>ND</sup> STREET  
 AND WEST 153<sup>RD</sup> STREET**  
 BETWEEN  
**SEVENTH AVENUE AND THE HARLEM RIVER**  
 PURSUANT TO SECTION 442 OF THE CHARTER OF THE CITY OF NEW YORK  
 DATED FEBRUARY 15<sup>TH</sup> 1936. SCALE: 1"=40 FEET.

BY *M.G.*  
 ED BY: M.G.

*Al. Montagna*  
 SECTION ENGINEER

*J.C. Collier*  
 ENGINEER OF DESIGN

*Chas. P. ...*  
 CHIEF ENGINEER

*Thomas Ben...*  
 PRESIDENT BOROUGH OF MANHATTAN