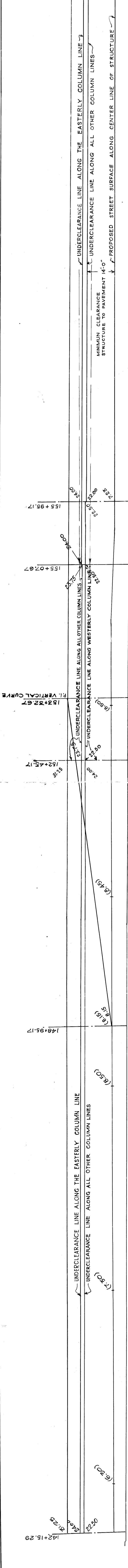
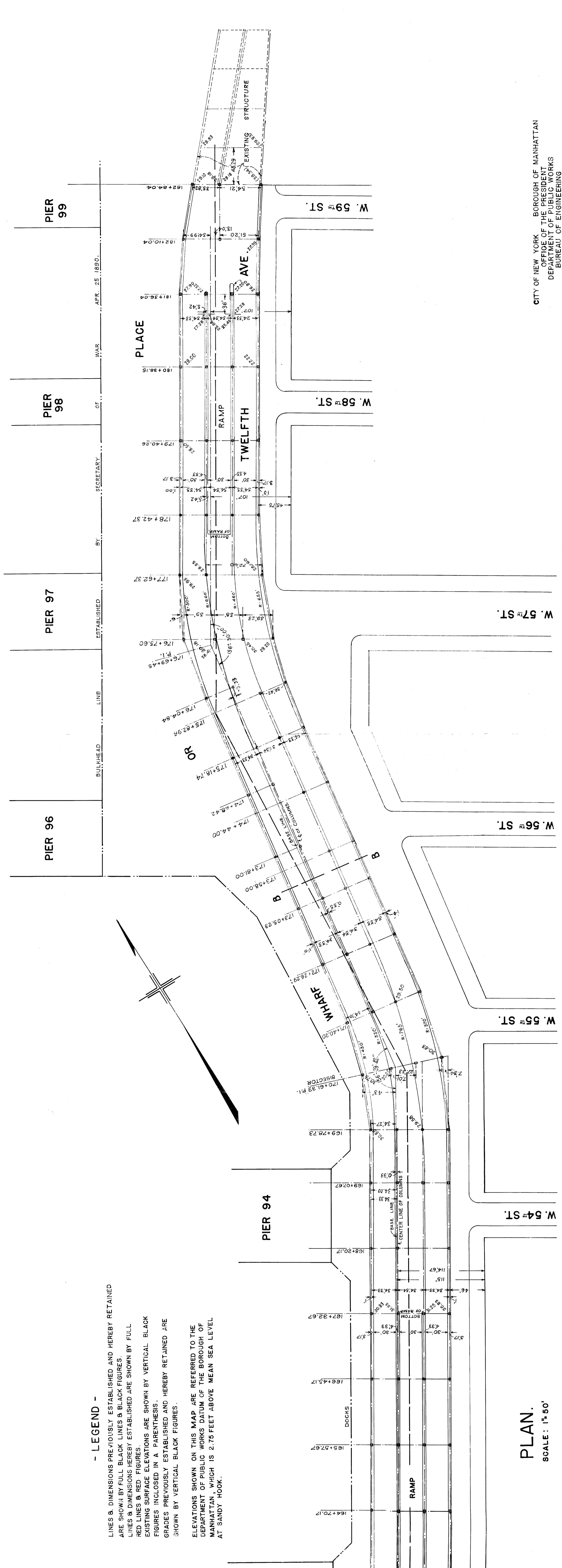


FOR GRADE DETAILS SEE PLAN BELOW

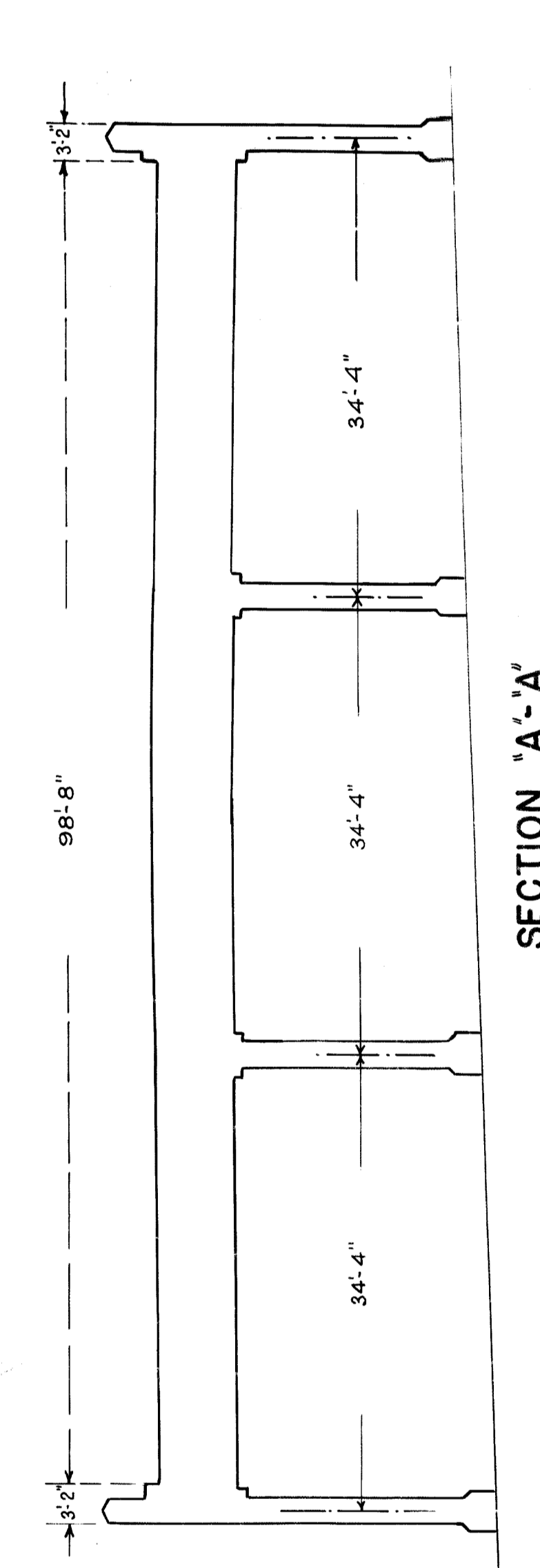


PROFILE
 SCALES: HORIZ. 1"=200'
 VERT. 1"=20'

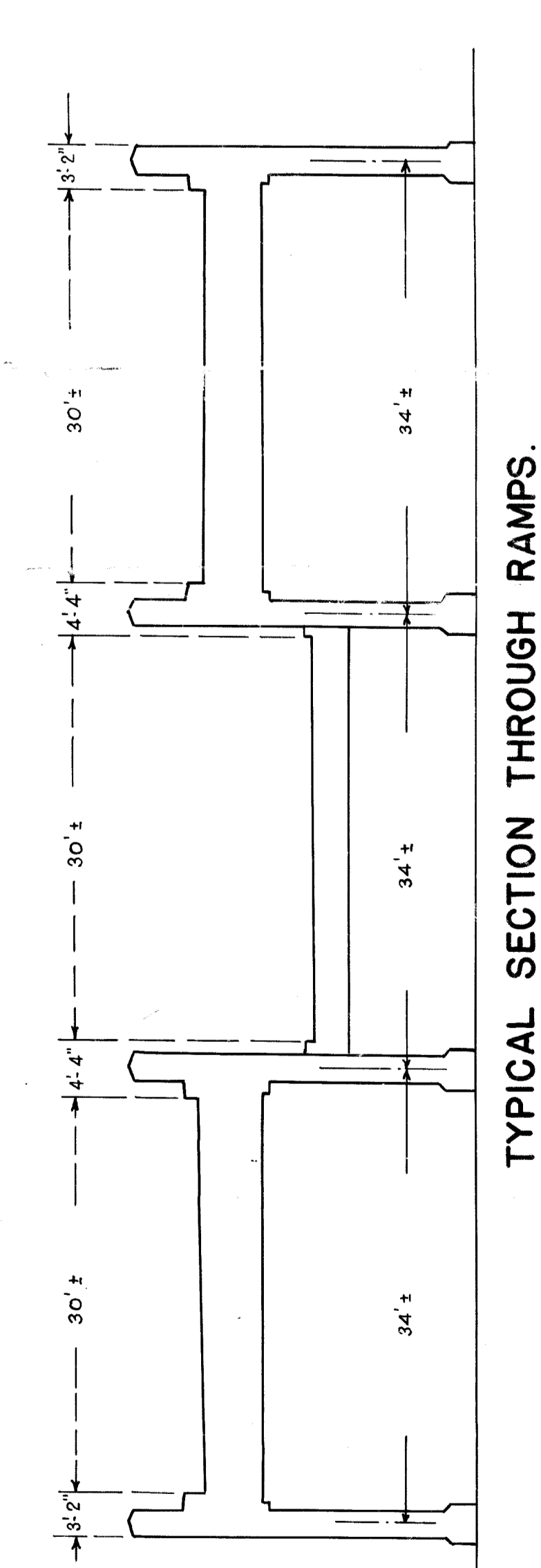
LEGEND -
 LINES & DIMENSIONS HEREIN ARE SHOWN AND HEREBY RETAINED AS SHOWN UNLESS OTHERWISE NOTED.
 LINES & DIMENSIONS HEREBY ESTABLISHED ARE SHOWN BY FULL LINES UNLESS OTHERWISE NOTED.
 DIMENSIONS HEREBY ESTABLISHED ARE SHOWN BY FULL LINES UNLESS OTHERWISE NOTED.
 DIMENSIONS HEREBY ESTABLISHED ARE SHOWN BY FULL LINES UNLESS OTHERWISE NOTED.
 DIMENSIONS HEREBY ESTABLISHED ARE SHOWN BY FULL LINES UNLESS OTHERWISE NOTED.



PLAN
 SCALE: 1"=50'



TYPICAL SECTION THROUGH RAMPS.



SECTION B-B

DRAWN BY: J. J. B. J.
 CHECKED BY: J. J. B. J.
 SECTION ENGINEER: J. J. B. J.
 ARCHITECT: J. J. B. J.
 REGISTERED PROFESSIONAL ENGINEER
 No. 12345
 State of New York

IF PERL BERLINER, SECRETARY OF THE BOARD OF ESTIMATE & APPOINTMENT OF NEW YORK DO HEREBY CERTIFY THAT THIS MAP IS ONE OF THOSE SIMILAR MAPS MADE AT THE REQUEST OF THE BOARD OF ESTIMATE & APPOINTMENT ON THE 15th DAY OF JULY 1912 AND APPROVED BY THE BOARD OF ESTIMATE & APPOINTMENT AFFECTING THE AREA EMPLOYED BY SAID MAP IN THE CITY OF NEW YORK AND IS PREPARED FOR THE BOARD OF ESTIMATE & APPOINTMENT UNDER AUTHORITY OF THE CHARTER OF THE CITY OF NEW YORK.
 DATED: JULY 15, 1912
 SECRETARY BOARD OF ESTIMATE & APPOINTMENT

CITY OF NEW YORK, BOROUGH OF MANHATTAN
 DEPARTMENT OF PUBLIC WORKS
 BUREAU OF ENGINEERING
AMENDED MAP OR PLAN
REVISING THE LINES AND COLUMN LOCATIONS
WEST 54th STREET AND WEST 58th STREET
AND ELIMINATING THE PIER CONNECTIONS AT THE
FOOT OF W. 46th, 48th, 50th, 52nd & 54th STS.
 AS SHOWN ON MAPS OR PLANS LAYING OUT AN
ELEVATED PUBLIC HIGHWAY
WITH RAMP APPROACHES
ALONG THE WATER FRONT OF THE HUDSON RIVER FROM
CANAL STREET TO W. 59th STREET
 PERMISSANT TO CHAPTER 486 OF THE LAWS OF 1912
 DATED: JULY 15, 1912
 SCALES AS SHOWN
 CHIEF ENGINEER
 PRESIDENT BOARD OF MANHATTAN
 No. 12345
 State of New York