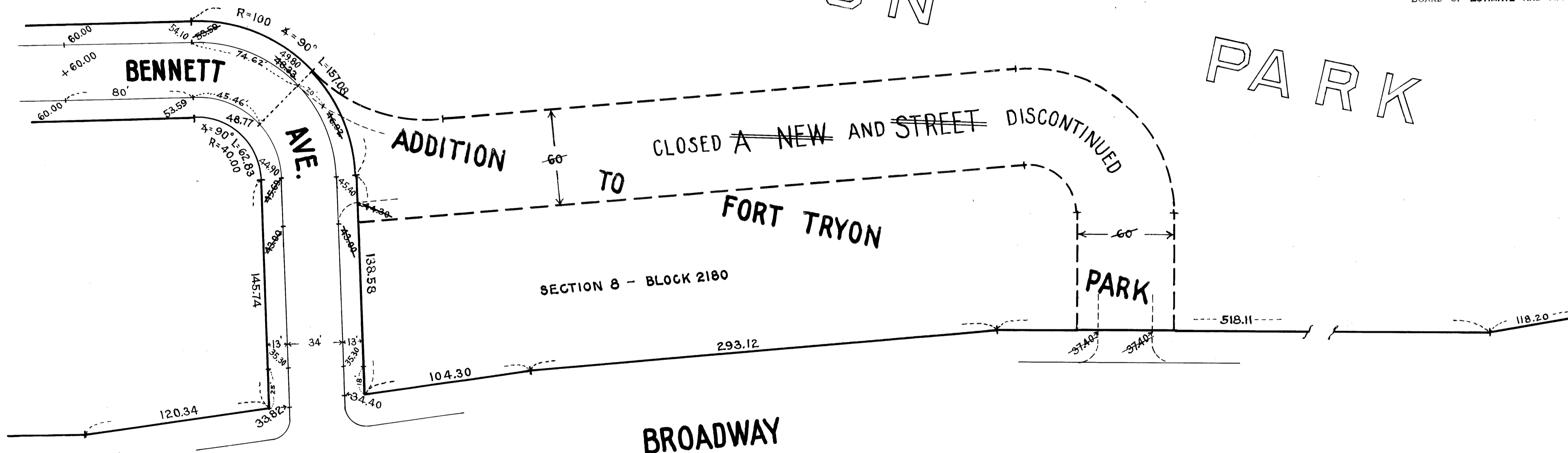


FORT

TRYON

PARK



I, PETER J. MCGOWAN, SECRETARY OF THE BOARD OF ESTIMATE AND APPORTIONMENT OF THE CITY OF NEW YORK, DO HEREBY CERTIFY THAT THIS MAP IS ONE OF THREE SIMILAR MAPS MADE AT THE DIRECTION OF, AND ADOPTED BY, THE SAID BOARD OF ESTIMATE AND APPORTIONMENT ON THE 23RD DAY OF June 1933, AND APPROVED BY THE MAYOR ON THE 17TH DAY OF July 1933 SUPERSEDING ALL MAPS HERETOFORE FILED AFFECTING THE AREA EMBRACED BY SAID MAP IN SO FAR AS IT MAKES ANY CHANGES THEREIN.

PREPARED FOR THE BOARD OF ESTIMATE AND APPORTIONMENT UNDER AUTHORITY OF THE CHARTER OF THE CITY OF NEW YORK DATED New York, Feb. 21, 1933

Peter J. McGowan
SECRETARY,
BOARD OF ESTIMATE AND APPORTIONMENT

BROADWAY

BENNETT

AVE.

ADDITION

CLOSED A NEW AND STREET DISCONTINUED

FORT TRYON

PARK

SECTION 8 - BLOCK 2180

LEGEND

- LINES AND DIMENSIONS PREVIOUSLY ESTABLISHED AND HEREBY RETAINED ARE SHOWN BY FULL BLACK LINES AND BLACK FIGURES
- LINES AND DIMENSIONS HEREBY ESTABLISHED ARE SHOWN BY FULL RED LINES AND RED FIGURES
- LINES PREVIOUSLY ESTABLISHED AND HEREBY DISCONTINUED ARE SHOWN BY BROKEN RED LINES
- DIMENSIONS PREVIOUSLY ESTABLISHED AND HEREBY DISCONTINUED ARE SHOWN BY BLACK FIGURES CROSSED BY A BLACK LINE
- GRADES PREVIOUSLY ESTABLISHED AND RETAINED ARE SHOWN BY VERTICAL BLACK FIGURES
- GRADES HEREBY ESTABLISHED ARE SHOWN BY VERTICAL RED FIGURES
- GRADES PREVIOUSLY ESTABLISHED AND HEREBY ABOLISHED ARE SHOWN BY VERTICAL BLACK FIGURES CROSSED BY A BLACK LINE
- ELEVATIONS SHOWN ON THIS MAP ARE REFERRED TO THE PUBLIC WORKS DATUM OF THE BOROUGH OF MANHATTAN WHICH IS 2.75 FEET ABOVE MEAN SEA LEVEL AT SANDY HOOK

W. 196TH ST.

CITY OF NEW YORK BOROUGH OF MANHATTAN
OFFICE OF THE PRESIDENT
DEPARTMENT OF PUBLIC WORKS
BUREAU OF ENGINEERING

MAP SHOWING A CHANGE IN THE STREET AND PARK SYSTEM HERETOFORE LAID OUT IN THE TERRITORY ALONG THE WESTERLY SIDE OF BROADWAY IMMEDIATELY NORTH OF BENNETT AVE.

BY LAYING OUT
AN ADDITION TO FORT TRYON PARK
AND
BY CLOSING AND DISCONTINUING
A NEW STREET
BETWEEN BENNETT AVE. AND BROADWAY AND INCORPORATING THE AREA OF THE DISCONTINUED STREET AS A PART OF FORT TRYON PARK

DATED: FEB. 17, 1933

SCALE: 1"=40'

William B. Greiner
CHIEF ENGINEER

Samuel J. ...
PRESIDENT BOROUGH OF MANHATTAN

DRAWN BY W.M.
CHECKED BY R.H.B.

W. Montenegro
SECTION ENGINEER

J. C. Collyer
ENGINEER OF DESIGN

Drawer 12

Filed in office of Council Clerk
Manhattan 9/11/33

FILE NO. 86.2 ACC. NO. 270.12