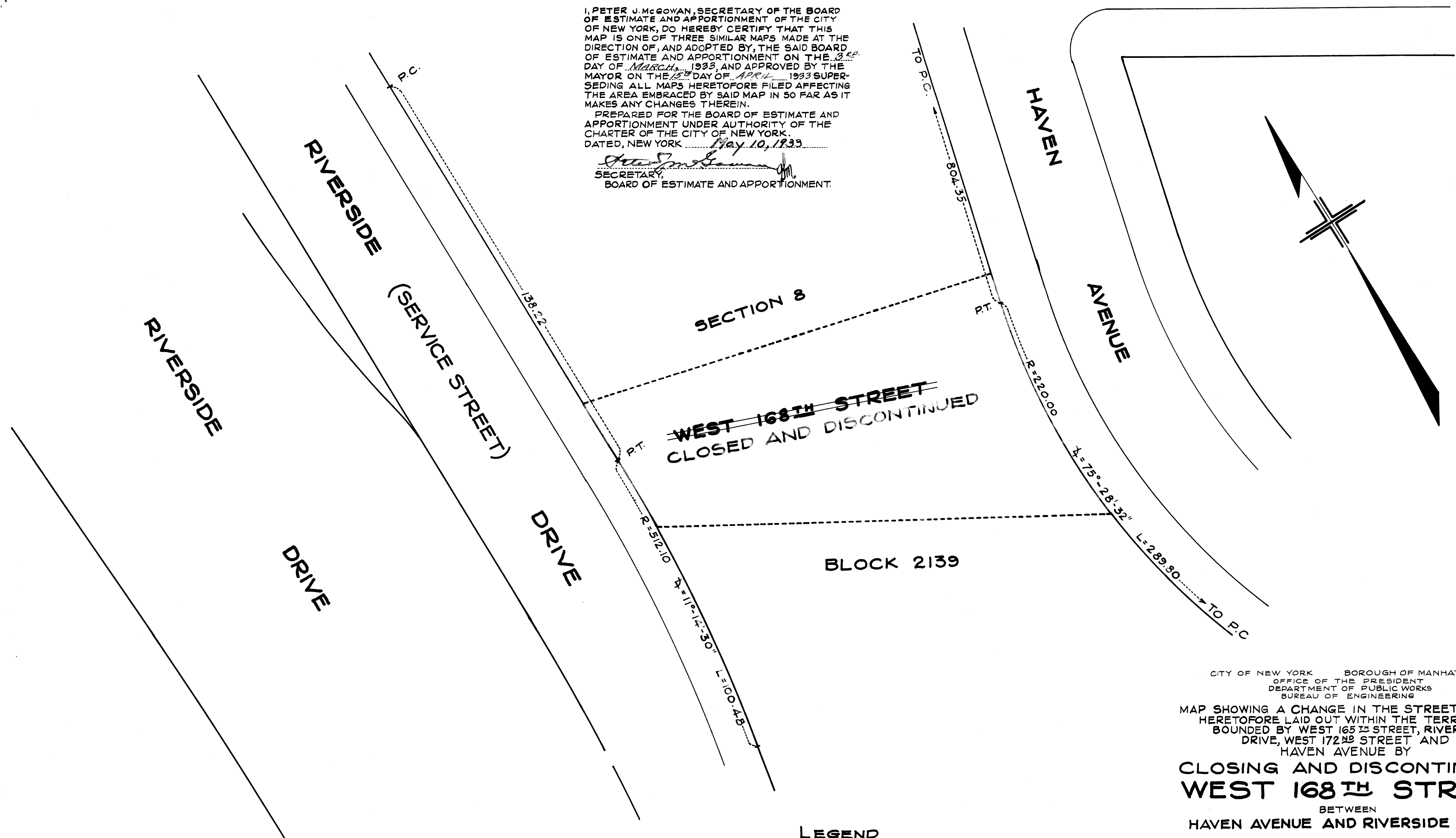


WEST 169TH STREET

I, PETER J. MCGOWAN, SECRETARY OF THE BOARD OF ESTIMATE AND APPORTIONMENT OF THE CITY OF NEW YORK, DO HEREBY CERTIFY THAT THIS MAP IS ONE OF THREE SIMILAR MAPS MADE AT THE DIRECTION OF, AND ADOPTED BY, THE SAID BOARD OF ESTIMATE AND APPORTIONMENT ON THE 22ND DAY OF March, 1933, AND APPROVED BY THE MAYOR ON THE 15TH DAY OF April, 1933 SUPERSEDING ALL MAPS HERETOFORE FILED AFFECTING THE AREA EMBRACED BY SAID MAP IN SO FAR AS IT MAKES ANY CHANGES THEREIN.

PREPARED FOR THE BOARD OF ESTIMATE AND APPORTIONMENT UNDER AUTHORITY OF THE CHARTER OF THE CITY OF NEW YORK.
DATED, NEW YORK May 10, 1933

Peter J. McGowan
SECRETARY
BOARD OF ESTIMATE AND APPORTIONMENT.



~~WEST 168TH STREET~~
CLOSED AND DISCONTINUED

BLOCK 2139

CITY OF NEW YORK BOROUGH OF MANHATTAN
OFFICE OF THE PRESIDENT
DEPARTMENT OF PUBLIC WORKS
BUREAU OF ENGINEERING

MAP SHOWING A CHANGE IN THE STREET SYSTEM
HERETOFORE LAID OUT WITHIN THE TERRITORY
BOUNDED BY WEST 165TH STREET, RIVERSIDE
DRIVE, WEST 172ND STREET AND
HAVEN AVENUE BY

**CLOSING AND DISCONTINUING
WEST 168TH STREET**
BETWEEN
HAVEN AVENUE AND RIVERSIDE DRIVE

LEGEND
LINES AND DIMENSIONS PREVIOUSLY LAID OUT AND RETAINED
ARE SHOWN BY FULL BLACK LINES AND BLACK FIGURES.
LINES AND DIMENSIONS HEREBY ESTABLISHED ARE SHOWN BY FULL
RED LINES AND RED FIGURES.
LINES HEREBY DISCONTINUED ARE SHOWN BY DASHED RED LINES.

DATED: DEC. 27, 1932.

SCALE: 1" = 20'

DRAWN BY: M. GOLDBERG
CHECKED BY: S. BROWN

H. Montinger
SECTION ENGINEER

J. C. Collier
ENGINEER IN CHARGE
DIVISION OF DESIGN

Chas. P. ...
CHIEF ENGINEER

Samuel ...
PRESIDENT BOROUGH OF MANHATTAN

B

Drawn 12

FILE No. 16.2 Acc. No. 26963