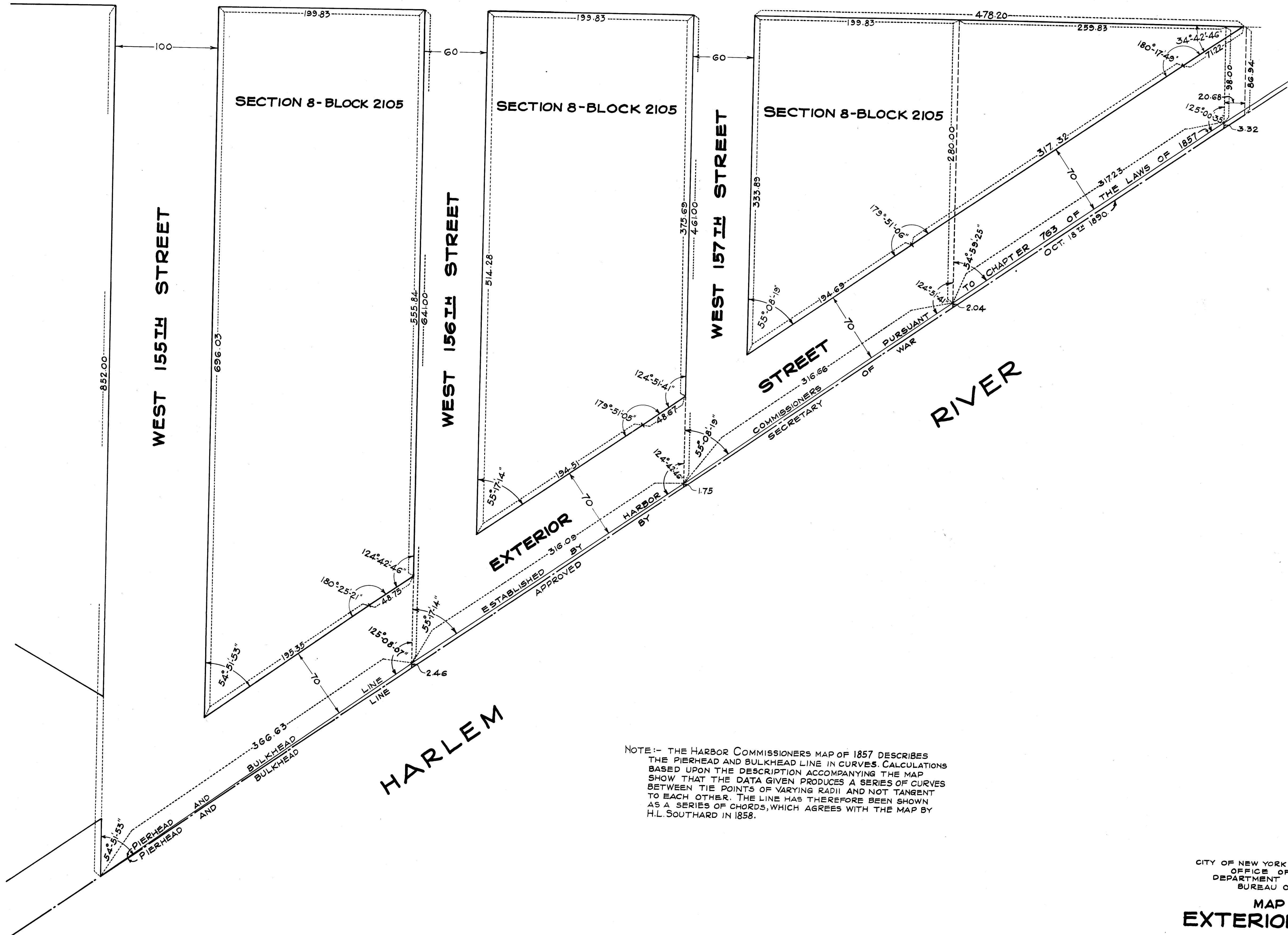


EIGHTH AVENUE



NOTE:- THE HARBOR COMMISSIONERS MAP OF 1857 DESCRIBES THE PIERHEAD AND BULKHEAD LINE IN CURVES. CALCULATIONS BASED UPON THE DESCRIPTION ACCOMPANYING THE MAP SHOW THAT THE DATA GIVEN PRODUCES A SERIES OF CURVES BETWEEN THE POINTS OF VARYING RADII AND NOT TANGENT TO EACH OTHER. THE LINE HAS THEREFORE BEEN SHOWN AS A SERIES OF CHORDS, WHICH AGREES WITH THE MAP BY H.L. SOUTHARD IN 1858.

CITY OF NEW YORK BOROUGH OF MANHATTAN
OFFICE OF THE PRESIDENT
DEPARTMENT OF PUBLIC WORKS
BUREAU OF ENGINEERING
MAP SHOWING
EXTERIOR STREET
BETWEEN
WEST 155TH STREET AND EIGHTH AVENUE
AS LAID OUT BY H.L. SOUTHARD IN 1858.
DATED: JAN. 17, 1933. SCALE: 1"=50'

H. L. Southard
CHIEF ENGINEER

DRAWN BY H. GOLDBERG
CHECKED BY S. W. ...

H. L. Southard
SECTION ENGINEER

F. C. Collins
ENGINEER IN CHARGE
DIVISION OF DESIGN

Drawn 37