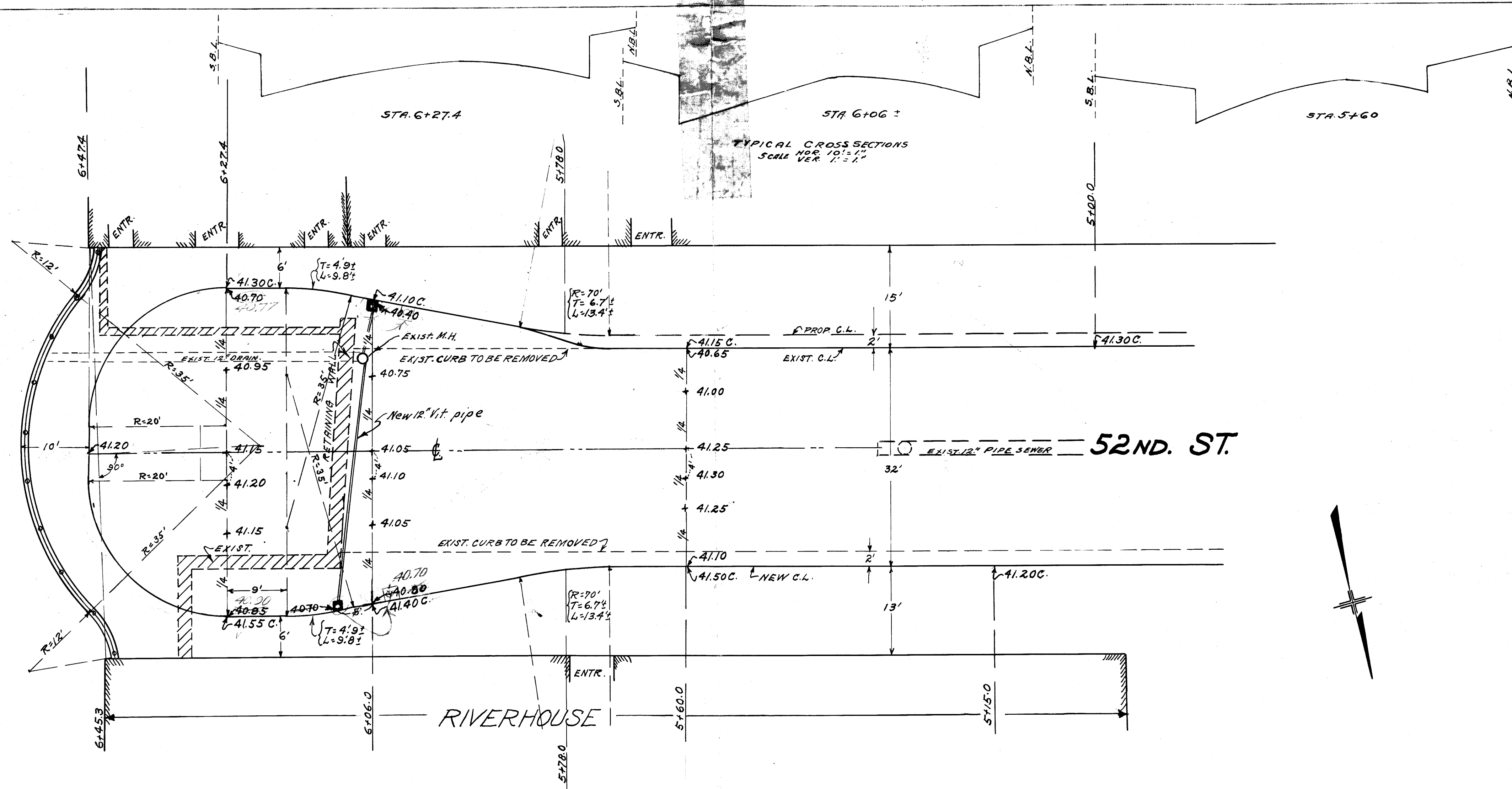


EAST RIVER



TYPICAL CROSS SECTIONS  
HOR. 10' = 1"  
SCALE VER. 1" = 1'

NOTE:  
CONSTRUCTION DETAILS TO BE  
FURNISHED ON OTHER DRAWINGS.


REVISED BY B.M. 9/2/31 (1867-1-1)

CITY OF NEW YORK BOROUGHS OF MANHATTAN  
OFFICE OF THE PRESIDENT  
DEPARTMENT OF PUBLIC WORKS  
BUREAU OF ENGINEERING  
GRADES FOR  
SPECIAL ROADWAY AND SIDEWALK  
TREATMENT AT  
E. 52<sup>ND</sup> ST. AND EXTERIOR ST.

*Conrad Richter*  
ACT. SECTION ENGR.

DRAWN BY *W.D.M.*  
CHECKED BY *W.D.M.*  
*J.C. Collyer*  
ENGINEER IN CHARGE  
DIV. OF DESIGN

CORNER CURB DATA  
UNLESS OTHERWISE NOTED  
RAD. \_\_\_\_\_  
TAN. \_\_\_\_\_  
LENGTH \_\_\_\_\_

PROP. CATCH BASIN SHOWN THUS   
PROP. CURB GRADES SHOWN THUS 41.50 C.  
ELEVATIONS ARE FOR TOP OF FINISHED PAVEMENT AND CURB.  
PROPOSED ELEVATIONS SHOWN THUS 30.20  
EXISTING ELEVATIONS SHOWN THUS \_\_\_\_\_

ELEVATIONS SHOWN ON THIS MAP ARE REFERRED TO THE  
PUBLIC WORKS DATUM OF THE BOROUGHS OF MANHATTAN  
WHICH IS 2.75 FEET ABOVE MEAN SEA LEVEL AT SANDY HOOK

PRIN. ASST. ENGINEER

DATED ~ AUG. 15, 1831  
APPROVED  
*Charles Purdy*  
CHIEF ENGINEER

FILE 5.2

SCALE ~ 1" = 10'  
ADOPTED  
*William Hubban*  
ACTING PRES. BORO. OF MANHATTAN  
ACC NO. 26645

Drawn 12

(B)