

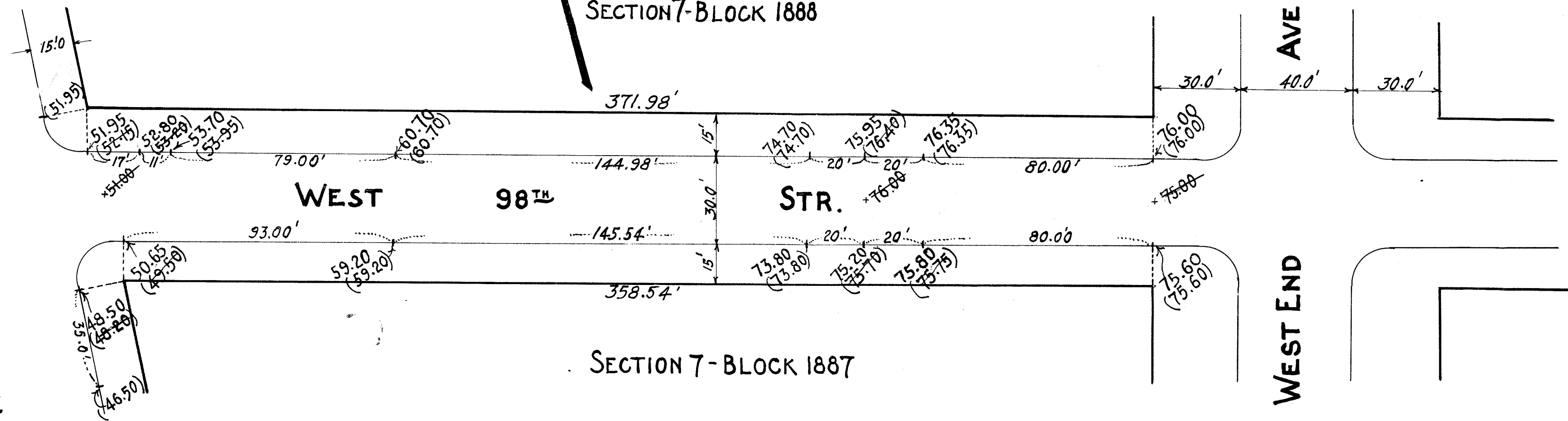
DRIVE.

RIVERSIDE

SECTION 7-BLOCK 1888

AVE.

WEST END



Joseph F. Higgins, Acting
 1. ~~PETER J. MOGOWAN~~ SECRETARY OF THE BOARD OF ESTIMATE AND APPORTIONMENT OF THE CITY OF NEW YORK, DO HEREBY CERTIFY THAT THIS MAP IS ONE OF THREE SIMILAR MAPS MADE AT THE DIRECTION OF, AND ADOPTED, BY THE SAID BOARD OF ESTIMATE AND APPORTIONMENT ON THE 21ST DAY OF MARCH 1930, AND APPROVED BY THE MAYOR ON THE 31ST DAY OF MARCH 1930 SUPERSIDING ALL MAPS HERETOFORE FILED AFFECTING THE AREA EMBRACED BY SAID MAP IN SO FAR AS IT MAKES ANY CHANGES THEREIN.
 PREPARED FOR THE BOARD OF ESTIMATE AND APPORTIONMENT UNDER AUTHORITY OF THE CHARTER OF THE CITY OF NEW YORK.
 DATED, NEW YORK, July 3 1929
Joseph F. Higgins
 Acting SECRETARY,
 BOARD OF ESTIMATE AND APPORTIONMENT

LEGEND
 GRADES PREVIOUSLY ESTABLISHED AND HEREBY ABOLISHED ARE SHOWN BY VERTICAL BLACK FIGURES CROSSED BY A BLACK LINE.
 GRADES HEREBY ESTABLISHED ARE SHOWN BY VERTICAL RED FIGURES
 EXISTING SURFACE ELEVATIONS ARE SHOWN BY VERTICAL BLACK FIGURES ENCLOSED IN A PARENTHESIS, AND WHERE HEREBY DISCONTINUED, ARE CROSSED BY A BLACK LINE.
 ELEVATIONS SHOWN ON THIS MAP ARE REFERRED TO THE PUBLIC WORKS DATUM OF THE BOROUGH OF MANHATTAN, WHICH IS 2.75 FEET ABOVE MEAN SEA LEVEL AT SANDY HOOK.

CITY OF NEW YORK BORO. OF MANHATTAN
 OFFICE OF THE PRESIDENT
 DEPARTMENT OF PUBLIC WORKS
 BUREAU OF ENGINEERING
MAP SHOWING
A CHANGE OF GRADE ON
WEST 98TH STREET
BETWEEN
WEST END AVE. & RIVERSIDE DRIVE

DATED DEC. 17, 1929. SCALE 1" = 30'

DRAWN BY *William Wilson*
 CHECKED BY W. MOFFATT

F. J. Roth
 SECTION ENGINEER.

J. C. Collyer
 ENGINEER IN CHARGE, DIV. OF DESIGN.

Charles P. ...
 CHIEF ENGINEER

John ...
 PRESIDENT BORO. OF MANHATTAN

Drawn 12

Filed in office of Borough Recd. Jan. 7/3/31 Salama

FILE NO. 9.21 Acc. No. 26625. B