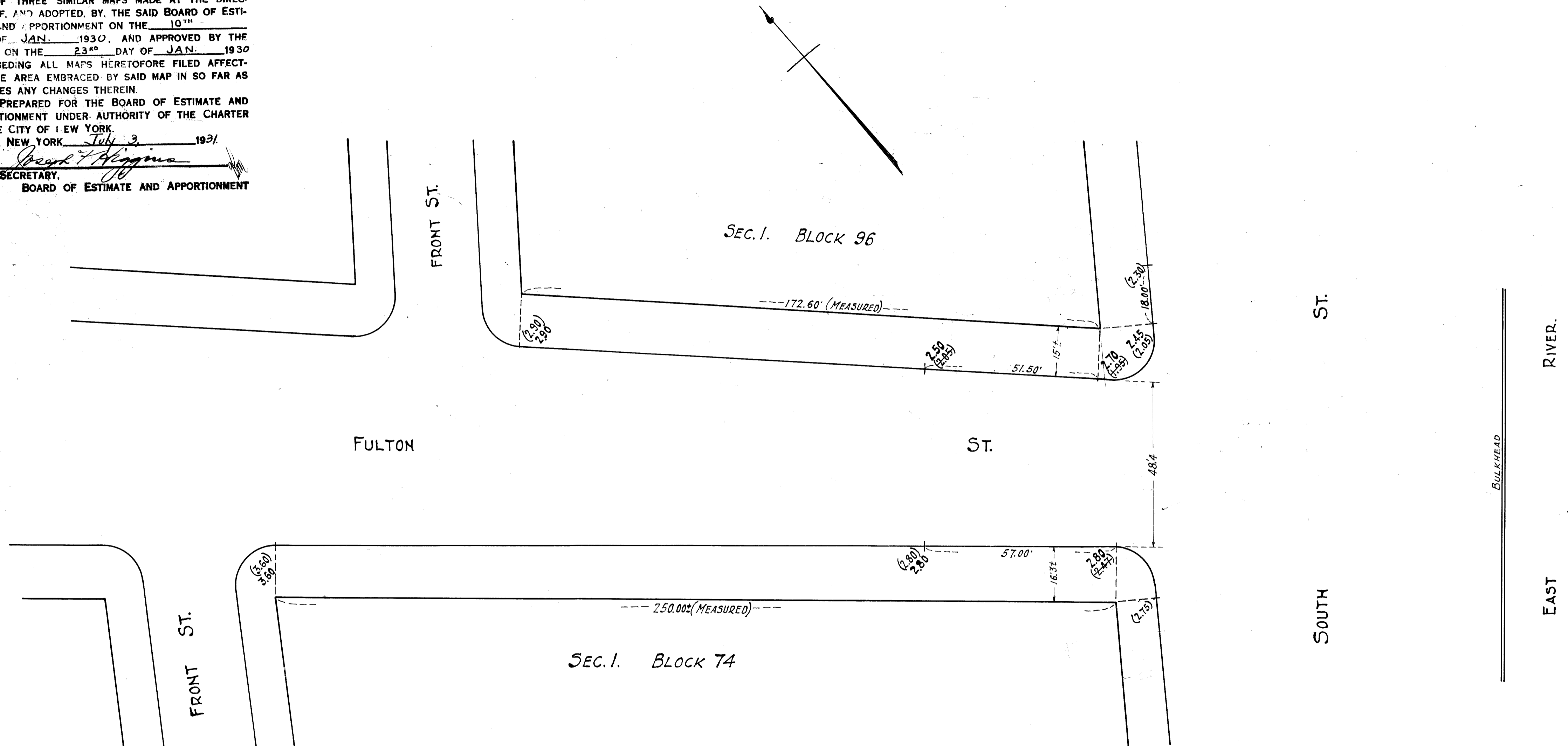


Joseph F. Higgins Acting
 PETER I. MCCOWAN, SECRETARY OF THE BOARD OF ESTIMATE AND APPORTIONMENT OF THE CITY OF NEW YORK, DO HEREBY CERTIFY THAT THIS MAP IS ONE OF THREE SIMILAR MAPS MADE AT THE DIRECTION OF, AND ADOPTED, BY THE SAID BOARD OF ESTIMATE AND APPORTIONMENT ON THE 10TH DAY OF JAN. 1930, AND APPROVED BY THE MAYOR ON THE 23RD DAY OF JAN. 1930 SUPERSEDING ALL MAPS HERETOFORE FILED AFFECTING THE AREA EMBRACED BY SAID MAP IN SO FAR AS IT MAKES ANY CHANGES THEREIN.

PREPARED FOR THE BOARD OF ESTIMATE AND APPORTIONMENT UNDER AUTHORITY OF THE CHARTER OF THE CITY OF NEW YORK DATED, NEW YORK, July 3, 1921.

Joseph F. Higgins
 Acting SECRETARY,
 BOARD OF ESTIMATE AND APPORTIONMENT



LEGEND.
 GRADES HEREBY ESTABLISHED ARE SHOWN BY VERTICAL RED FIGURES.
 EXISTING SURFACE ELEVATIONS ARE SHOWN BY VERTICAL BLACK FIGURES ENCLOSED IN A PARENTHESIS AND WHERE HEREBY DISCONTINUED ARE CROSSED BY A BLACK LINE.
 ELEVATIONS SHOWN ON THIS MAP ARE REFERRED TO THE PUBLIC WORKS DATUM OF THE BOROUGH OF MANHATTAN WHICH IS 2.75 FEET ABOVE MEAN SEA LEVEL AT SANDY HOOK.

CITY OF NEW YORK BOROUGH OF MANHATTAN
 OFFICE OF THE PRESIDENT
 DEPARTMENT OF PUBLIC WORKS
 BUREAU OF ENGINEERING
 MAP SHOWING
 CHANGE OF GRADE
FULTON STREET
 FROM
 FRONT ST TO SOUTH ST.

DATED OCT. 31, 1929. SCALE - 1" = 20'

W. P. ...
 CHIEF ENGINEER ACTING PRES. BORO. OF MANHATTAN.

DRAWN BY @
 CHECKED BY H.H. RAMGER.
Henry J. Rover
 SECTION ENGINEER.

J. C. Collier
 ENGINEER IN CHARGE, DIV. OF DESIGN.

Filed in Office of Dept. of Manhattan
 7/17/31
 FINE No. 56.2 Acc. No. 26624