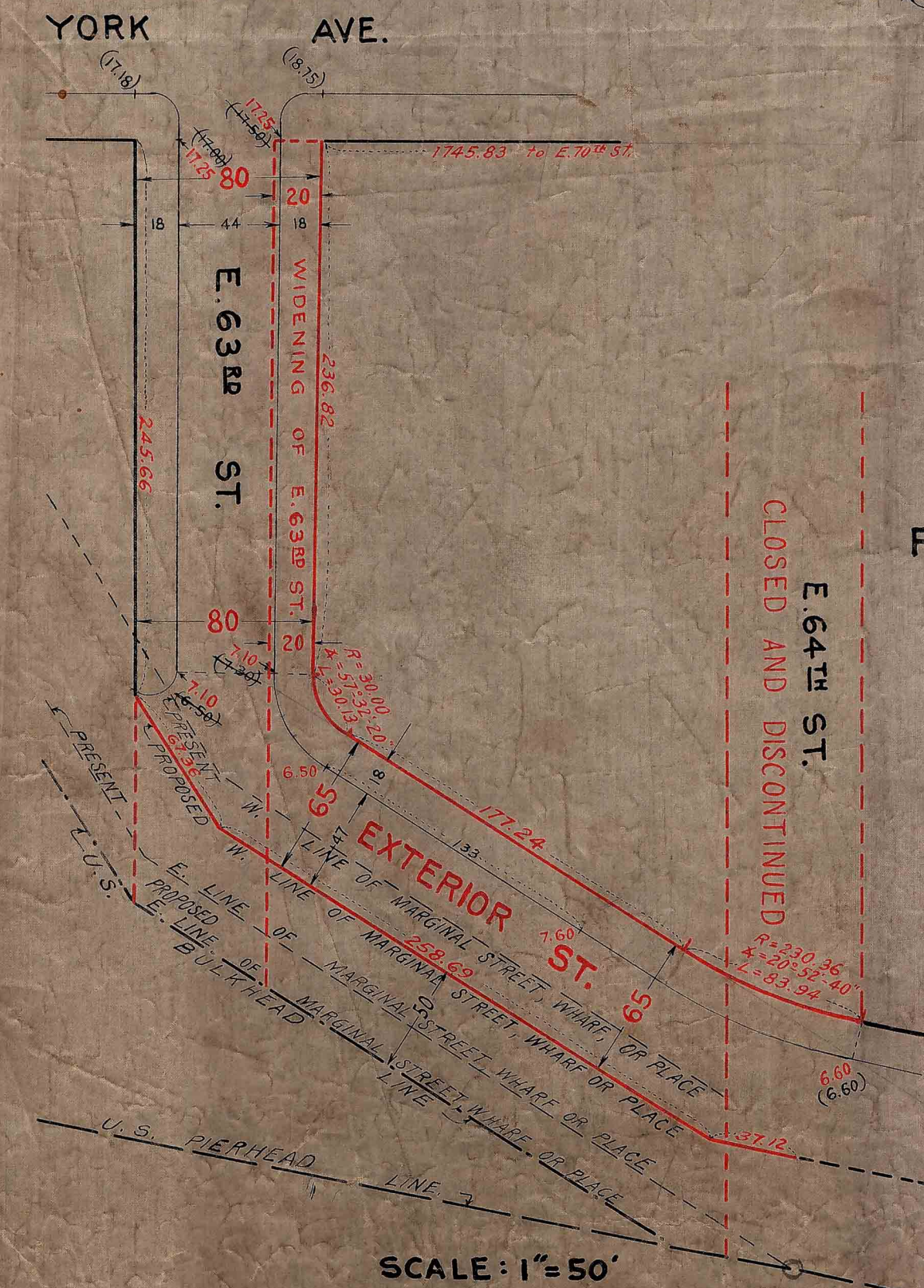
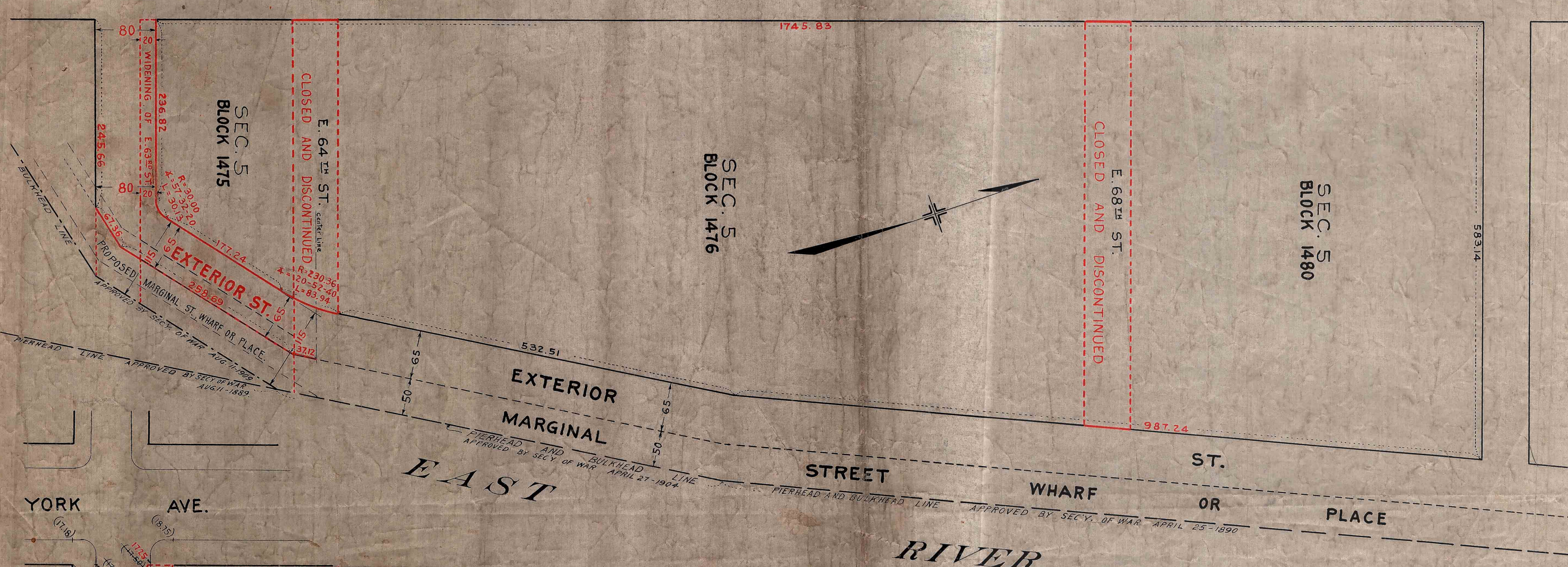


E. 63RD ST.
 E. 64TH ST.
 E. 65TH ST.
 E. 66TH ST.
 E. 67TH ST.
 E. 68TH ST.
 E. 69TH ST.
 E. 70TH ST.



SCALE: 1" = 80'

SCALE: 1" = 50'

I, JAMES J. MCGOWAN, SECRETARY OF THE BOARD OF ESTIMATE AND APPORTIONMENT OF THE CITY OF NEW YORK, DO HEREBY CERTIFY THAT THIS MAP IS ONE OF THREE SIMILAR MAPS MADE AT THE DIRECTION OF, AND ADOPTED BY THE SAID BOARD OF ESTIMATE AND APPORTIONMENT ON THE 14TH DAY OF OCTOBER, 1930, AND APPROVED BY THE MAYOR ON THE 5TH DAY OF FEBRUARY, 1931, SUPERSEDING ALL MAPS HERETOFORE FILED AFFECTING THE AREA EMBRACED BY SAID MAP IN SO FAR AS IT MAKES ANY CHANGES THEREIN.
 PREPARED FOR THE BOARD OF ESTIMATE AND APPORTIONMENT UNDER AUTHORITY OF THE CHARTER OF THE CITY OF NEW YORK.
 Dated, New York, March 23, 1931.
 JAMES J. MCGOWAN
 SECRETARY,
 BOARD OF ESTIMATE AND APPORTIONMENT

CITY OF NEW YORK BOROUGHS OF MANHATTAN
 OFFICE OF THE PRESIDENT
 DEPARTMENT OF PUBLIC WORKS
 BUREAU OF ENGINEERING
 MAP SHOWING A CHANGE IN THE STREET SYSTEM
 HERETOFORE LAID OUT WITHIN THE TERRITORY BOUNDED BY
E. 63RD ST., YORK AVE., E. 70TH ST. & EXTERIOR ST., EAST RIVER
 CLOSING AND DISCONTINUING
E. 64TH ST. & E. 68TH ST.
 FROM YORK AVE. TO EXTERIOR ST.
 LAYING OUT A SOUTHERLY EXTENSION OF
EXTERIOR ST.
 FROM E. 64TH ST. TO E. 63RD ST.
 WIDENING AND CHANGING THE GRADE OF
E. 63RD ST.
 FROM YORK AVE. TO EXTERIOR ST.

DATED - JUNE 13 - 1930

SCALE - As Shown

W. J. McGowan
 CHIEF ENGINEER

J. J. McGowan
 PRES. BORO. OF MANHATTAN

LEGEND

GRADES HEREBY ESTABLISHED ARE SHOWN BY VERTICAL RED FIGURES.
 EXISTING ELEVATIONS ARE SHOWN BY VERTICAL BLACK FIGURES ENCLOSED IN PARENTHESIS, AND WHEN HEREBY DISCONTINUED ARE CROSSED BY A BLACK LINE.
 LINES AND DIMENSIONS PREVIOUSLY LAID OUT AND RETAINED ARE SHOWN BY FULL BLACK LINES AND BLACK FIGURES.
 LINES AND DIMENSIONS HEREBY ESTABLISHED ARE SHOWN BY FULL RED LINES AND RED FIGURES.
 LINES HEREBY DISCONTINUED ARE SHOWN BY DASHED RED LINES.
 ELEVATIONS SHOWN ON THIS MAP ARE REFERRED TO THE PUBLIC WORKS DATUM OF THE BOROUGH OF MANHATTAN WHICH IS 2.75 FEET ABOVE MEAN SEA LEVEL AT SANDY HOOK.

H. J. Keefe
 ACT. ENGINEER OF DESIGN