

U.S. BULKHEAD LINE

MARGINAL STREET, WHARF OR PLACE

I, PETER J. MCGOWAN, SECRETARY OF THE BOARD OF ESTIMATE AND APPORTIONMENT OF THE CITY OF NEW YORK, DO HEREBY CERTIFY THAT THIS MAP IS ONE OF THREE SIMILAR MAPS MADE AT THE DIRECTION OF, AND ADOPTED BY, THE SAID BOARD OF ESTIMATE AND APPORTIONMENT ON THE 23RD DAY OF March, 1929, AND APPROVED BY THE MAYOR ON THE 27TH DAY OF April, 1929, SUPERSADING ALL MAPS HERETOFORE FILED AFFECTING THE AREA EMBRACED BY SAID MAP IN SO FAR AS IT MAKES ANY CHANGES THEREIN.

PREPARED FOR THE BOARD OF ESTIMATE AND APPORTIONMENT UNDER AUTHORITY OF THE CHARTER OF THE CITY OF NEW YORK
DATED, NEW YORK, April 3, 1930

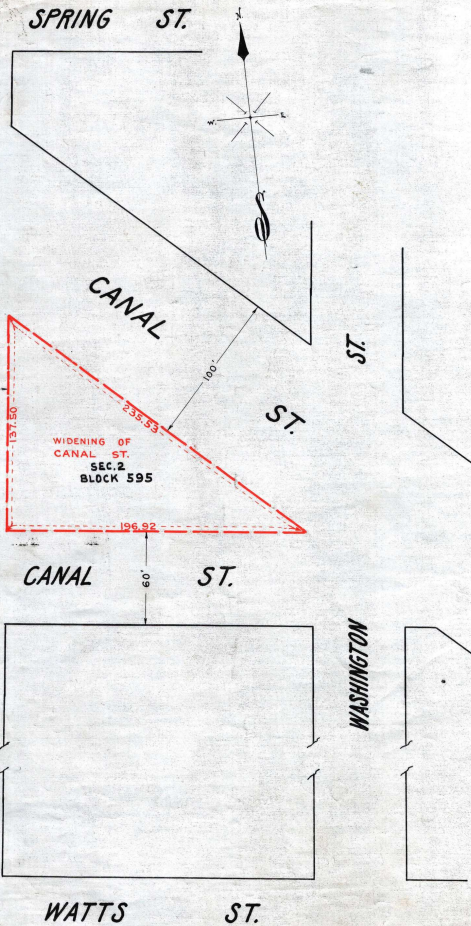
Peter J. McGowan
SECRETARY
BOARD OF ESTIMATE AND APPORTIONMENT

DRAWN BY R.H. BENNETT
CHECKED BY W. HOFFMATT

A.J. Beck
SECT. ENGR.

J.C. Collins
ENGR. OF DESIGN

Drawn 12



- LEGEND -
LINES PREVIOUSLY ESTABLISHED AND HEREBY DISCONTINUED ARE SHOWN BY BROKEN RED LINES.

CITY OF NEW YORK BOROUGHS OF MANHATTAN
OFFICE OF THE PRESIDENT
DEPARTMENT OF PUBLIC WORKS
BUREAU OF ENGINEERING

MAP SHOWING
A CHANGE IN THE STREET SYSTEM
HERETOFORE LAID OUT WITHIN
THE TERRITORY BOUNDED BY
WATTS ST.-WEST ST.-SPRING ST.-WASHINGTON ST.
BY WIDENING
CANAL ST.
BETWEEN
WASHINGTON ST. AND WEST ST.

DATED: SEPT. 20-1929 SCALE 1"=40'

Walter Sweeney
CHIEF ENGINEER

John J. Kelly
PRES. BORO. OF MANHATTAN

File No. 532 Acc. No. 26397

Filed in the Office of
George B. S. [unclear] 7/16/30 [unclear]

(B)