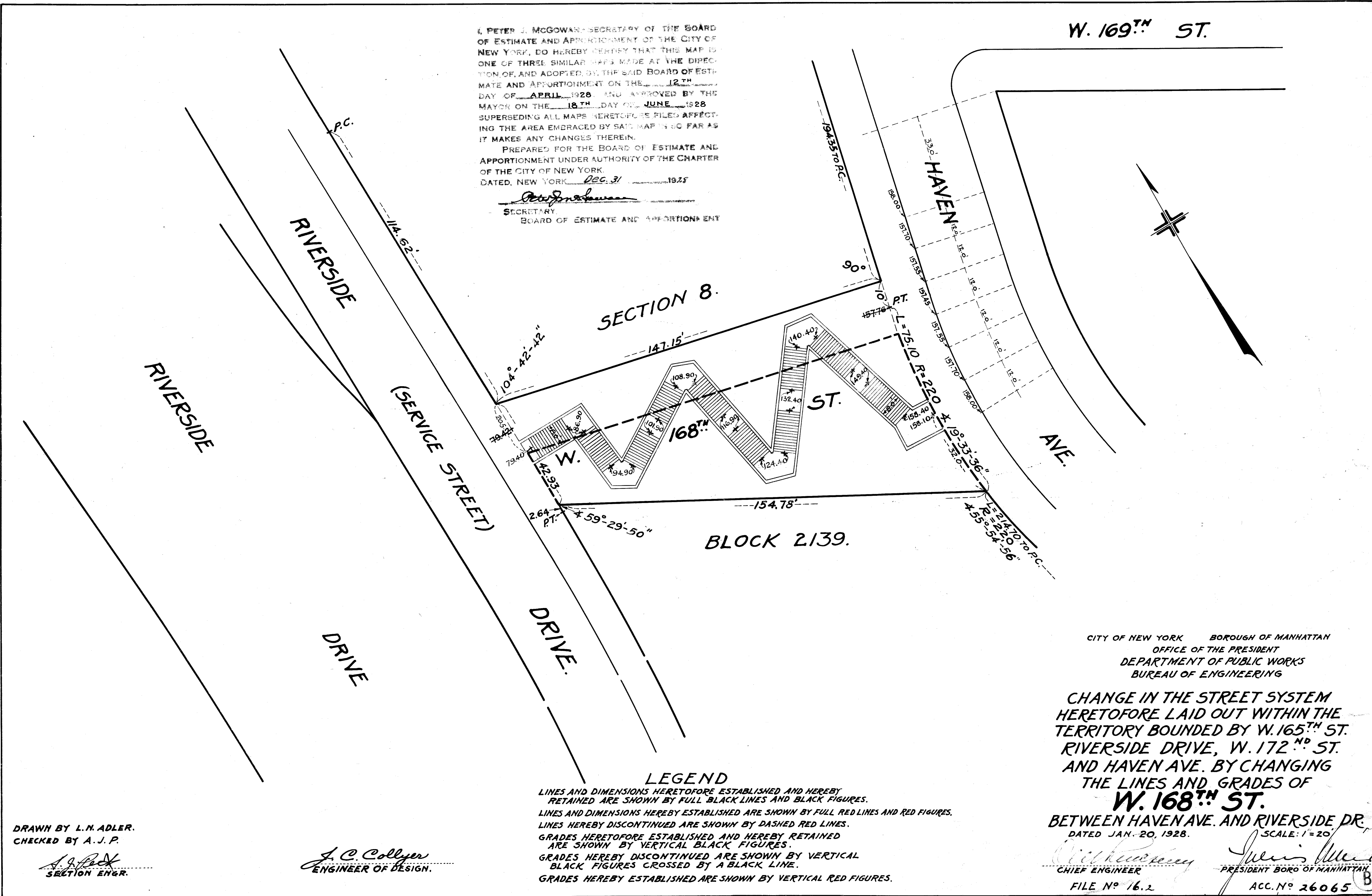


I, PETER J. MCGOWAN, SECRETARY OF THE BOARD OF ESTIMATE AND APPOINTMENT OF THE CITY OF NEW YORK, DO HEREBY CERTIFY THAT THIS MAP IS ONE OF THREE SIMILAR MAPS MADE AT THE DIRECTION OF, AND ADOPTED BY, THE SAID BOARD OF ESTIMATE AND APPOINTMENT ON THE 12<sup>TH</sup> DAY OF APRIL, 1928, AND APPROVED BY THE MAYOR ON THE 18<sup>TH</sup> DAY OF JUNE, 1928, SUPERSEDING ALL MAPS HERETOFORE FILED AFFECTING THE AREA EMBRACED BY SAID MAP IN SO FAR AS IT MAKES ANY CHANGES THEREIN.

PREPARED FOR THE BOARD OF ESTIMATE AND APPOINTMENT UNDER AUTHORITY OF THE CHARTER OF THE CITY OF NEW YORK, DATED, NEW YORK, DEC. 31, 1925.

*Peter J. McGowan*  
SECRETARY,  
BOARD OF ESTIMATE AND APPOINTMENT



DRAWN BY L. N. ADLER.  
CHECKED BY A. J. P.  
*L. N. Adler*  
SECTION ENGR.

*J. C. Collyer*  
ENGINEER OF DESIGN.

**LEGEND**  
 LINES AND DIMENSIONS HERETOFORE ESTABLISHED AND HEREBY RETAINED ARE SHOWN BY FULL BLACK LINES AND BLACK FIGURES.  
 LINES AND DIMENSIONS HEREBY ESTABLISHED ARE SHOWN BY FULL RED LINES AND RED FIGURES.  
 LINES HEREBY DISCONTINUED ARE SHOWN BY DASHED RED LINES.  
 GRADES HERETOFORE ESTABLISHED AND HEREBY RETAINED ARE SHOWN BY VERTICAL BLACK FIGURES.  
 GRADES HEREBY DISCONTINUED ARE SHOWN BY VERTICAL BLACK FIGURES CROSSED BY A BLACK LINE.  
 GRADES HEREBY ESTABLISHED ARE SHOWN BY VERTICAL RED FIGURES.

CITY OF NEW YORK BOROUGH OF MANHATTAN  
 OFFICE OF THE PRESIDENT  
 DEPARTMENT OF PUBLIC WORKS  
 BUREAU OF ENGINEERING

**CHANGE IN THE STREET SYSTEM  
 HERETOFORE LAID OUT WITHIN THE  
 TERRITORY BOUNDED BY W. 165<sup>TH</sup> ST.  
 RIVERSIDE DRIVE, W. 172<sup>ND</sup> ST.  
 AND HAVEN AVE. BY CHANGING  
 THE LINES AND GRADES OF  
 W. 168<sup>TH</sup> ST.  
 BETWEEN HAVEN AVE. AND RIVERSIDE DR.**

DATED JAN. 20, 1928. SCALE: 1" = 20'

*William C. Cullen*  
CHIEF ENGINEER

*Julius A. Meyer*  
PRESIDENT BORO OF MANHATTAN

FILE N<sup>o</sup> 16.2 ACC. N<sup>o</sup> 26065 B

Drawn 11