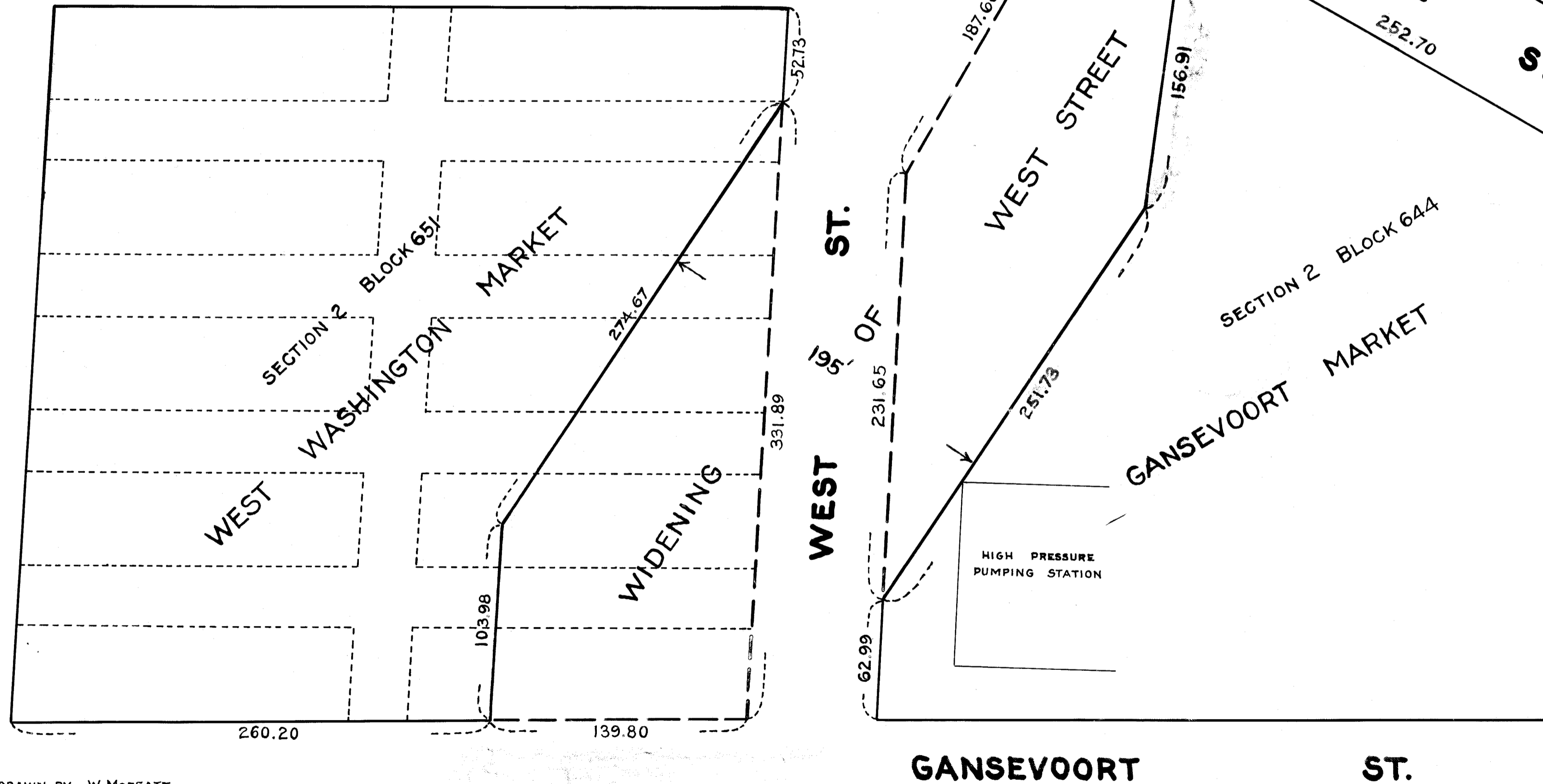


—LEGEND—
 STREET LINES HERETOFORE ESTABLISHED AND HEREBY RETAINED ARE SHOWN BY FULL BLACK LINES AND ARE CONSIDERED TO BE REPRESENTED BY THE AVERAGE BUILDING LINES AS IN POSSESSION.
 LINES AND DIMENSIONS HEREBY ESTABLISHED ARE SHOWN BY FULL RED LINES AND RED FIGURES.
 LINES HEREBY DISCONTINUED ARE SHOWN BY DASH RED LINES.



I, PETER J. MCGOWAN, SECRETARY OF THE BOARD OF ESTIMATE AND APPORTIONMENT OF THE CITY OF NEW YORK, DO HEREBY CERTIFY THAT THIS MAP IS ONE OF THREE SIMILAR MAPS MADE AT THE DIRECTION OF, AND ADOPTED BY, THE SAID BOARD OF ESTIMATE AND APPORTIONMENT ON THE 28TH DAY OF APRIL 1927, AND APPROVED BY THE MAYOR ON THE 10TH DAY OF AUGUST 1927 SUPERSEDING ALL MAPS HERETOFORE FILED AFFECTING THE AREA EMBRACED BY SAID MAP IN SO FAR AS IT MAKES ANY CHANGES THEREIN.
 PREPARED FOR THE BOARD OF ESTIMATE AND APPORTIONMENT UNDER AUTHORITY OF THE CHARTER OF THE CITY OF NEW YORK DATED, NEW YORK, October 24, 1927.
Peter J. McGowan
 SECRETARY,
 BOARD OF ESTIMATE AND APPORTIONMENT

CITY OF NEW YORK BOROUGHS OF MANHATTAN
 OFFICE OF THE PRESIDENT
 DEPARTMENT OF PUBLIC WORKS
 BUREAU OF ENGINEERING
 MAP SHOWING A CHANGE IN THE STREET SYSTEM HERETOFORE LAID OUT WITHIN THE TERRITORY BOUNDED BY GANSEVOORT STREET WEST STREET, W. 13TH ST. AND WASHINGTON ST. BY WIDENING WEST STREET ON ITS EASTERLY AND WESTERLY SIDES BETWEEN GANSEVOORT ST. AND LITTLE W. 12TH STREETS

DRAWN BY W. MOFEATT
 CHECKED BY W. F. MERCER
W. F. Mercer
 ASS'T. ENGINEER

J. C. Collyer
 ENGINEER-IN-CHARGE
 DIVISION OF DESIGN

DATED MAR. 15-1927
W. F. Mercer
 CHIEF ENGINEER

1" = 50' SCALE
 PRES. BORO. MANHATTAN
 FILE NO. 73.2
 ACC. NO. 25851
 (B)

Drawer 10

Filed in the Office of the Chief Engineer
 Manhattan 10/31/27