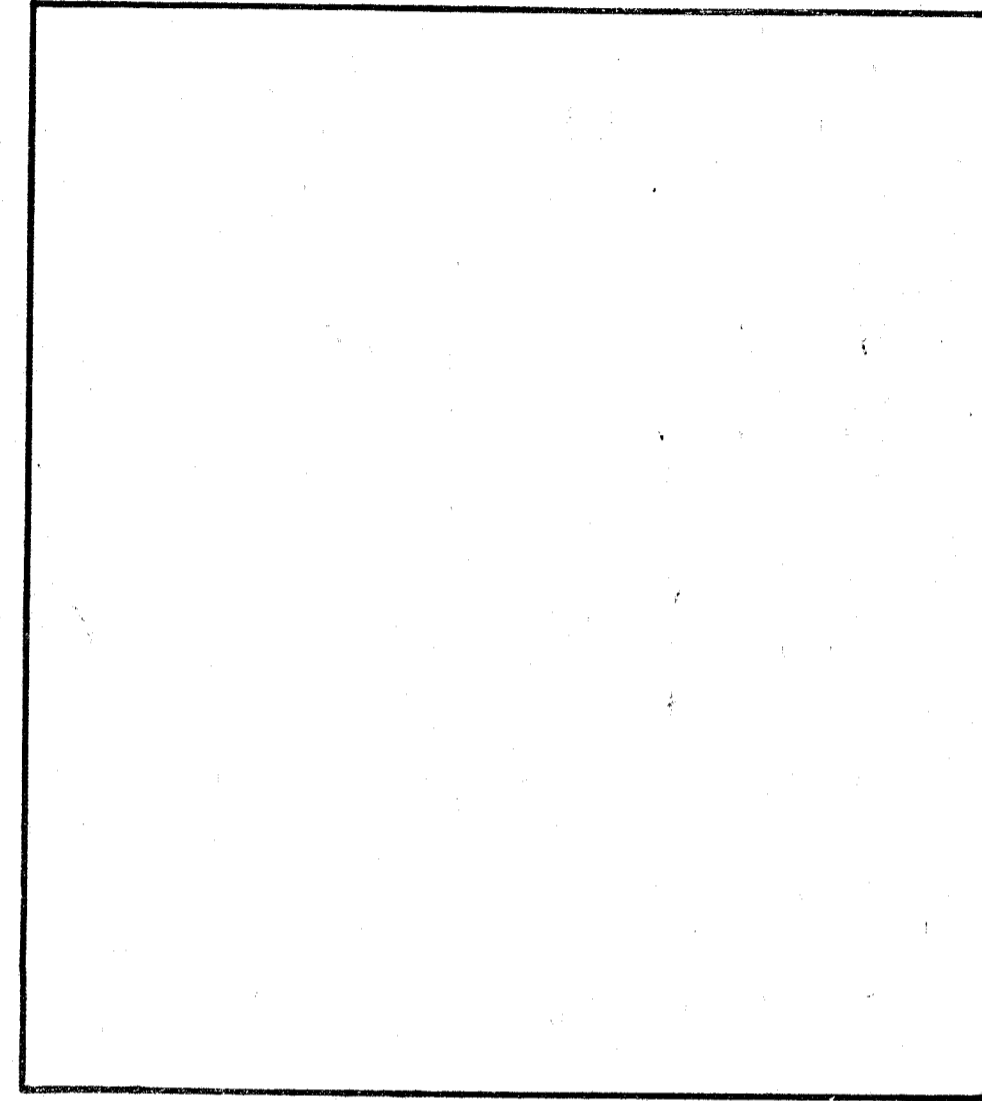


SEAMAN AVE.



W. 214TH STR.

ISHAM PARK.

I, PETER J. MCGOWAN, SECRETARY OF THE BOARD OF ESTIMATE AND APPORTIONMENT OF THE CITY OF NEW YORK, DO HEREBY CERTIFY THAT THIS MAP IS ONE OF THREE SIMILAR MAPS MADE AT THE DIRECTION OF, AND ADOPTED, BY THE SAID BOARD OF ESTIMATE AND APPORTIONMENT ON THE 17TH DAY OF JUNE 1926, AND APPROVED BY THE MAYOR ON THE 28TH DAY OF JULY 1926 SUPERSEDING ALL MAPS HERETOFORE FILED AFFECTING THE AREA EMBRACED BY SAID MAP IN SO FAR AS IT MAKES ANY CHANGES THEREIN.

PREPARED FOR THE BOARD OF ESTIMATE AND APPORTIONMENT UNDER AUTHORITY OF THE CHARTER OF THE CITY OF NEW YORK. DATED, NEW YORK, Sept. 13, 1927

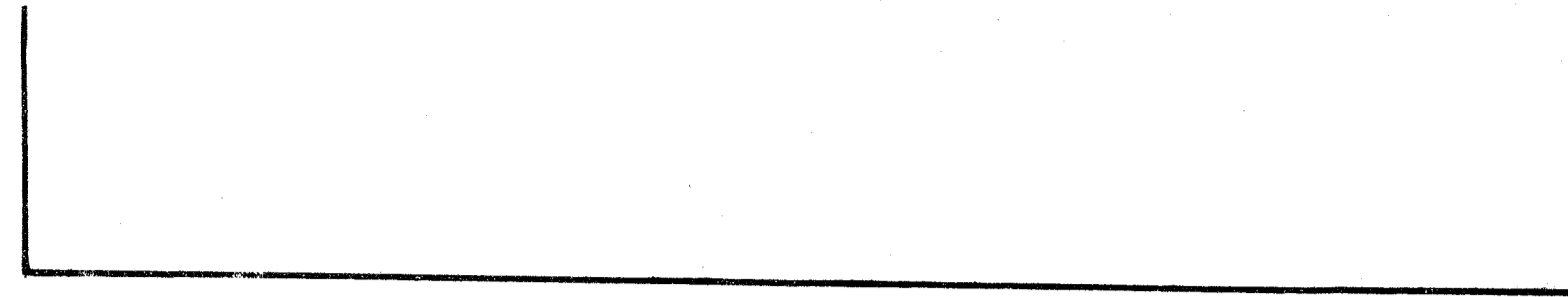
Secretary, BOARD OF ESTIMATE AND APPORTIONMENT

DRAWN BY S.W.
CHECKED BY R.L.R.

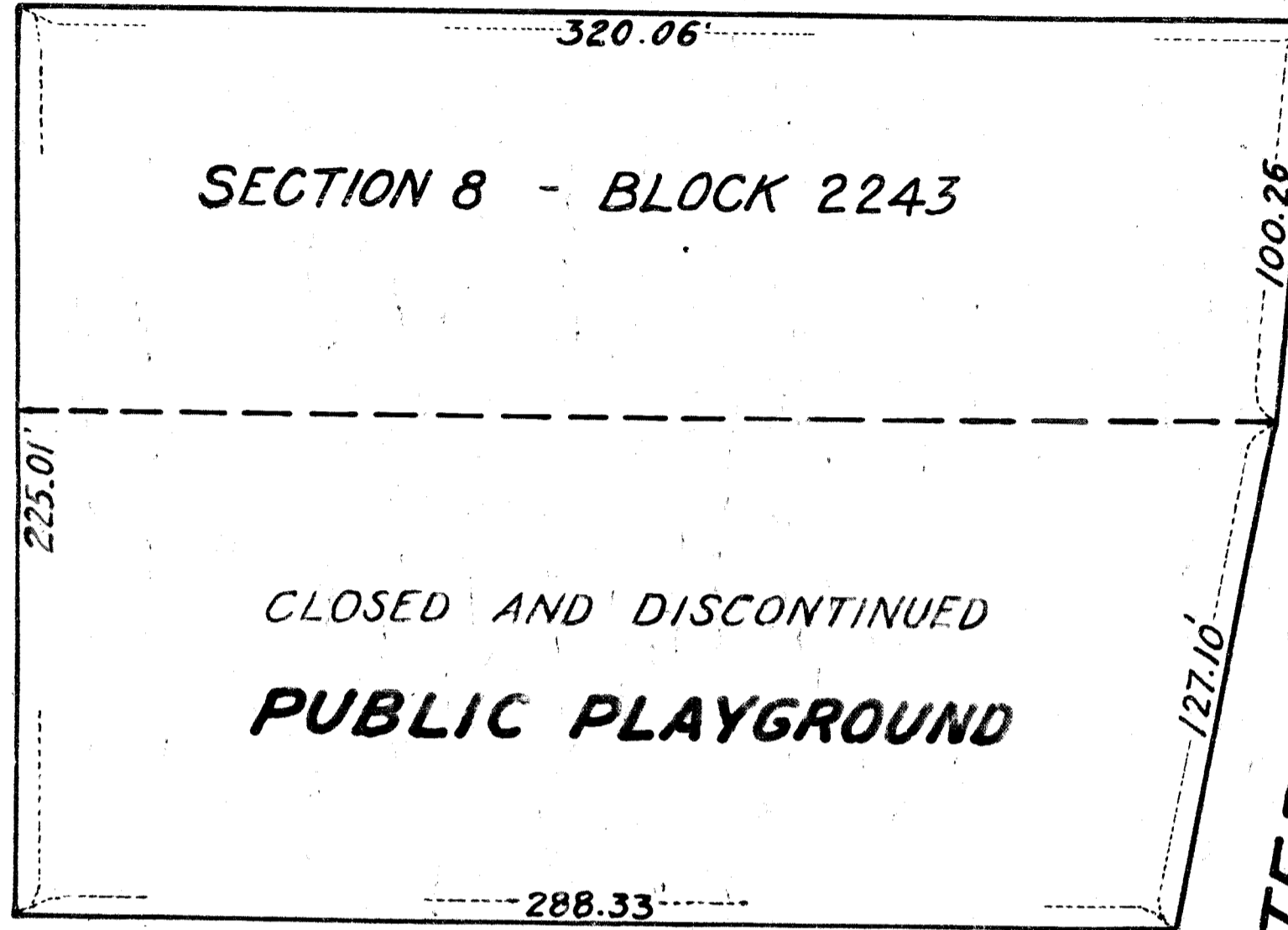
A. J. Paax
ASSISTANT ENGINEER.

J. C. Collyer
ENGINEER OF DESIGN.

TERRACE WEST.
PARK



W. 215TH STR.



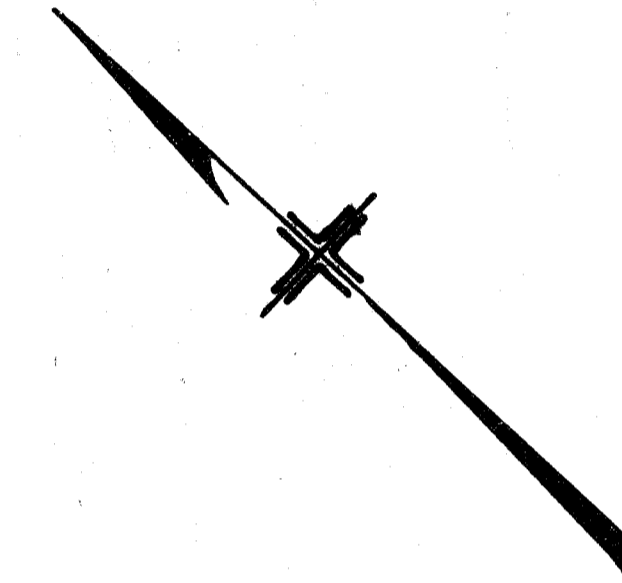
W. 214TH STR.

ISHAM PARK.

--LEGEND--
LINES AND DIMENSIONS PREVIOUSLY ESTABLISHED AND HEREBY RETAINED ARE SHOWN BY FULL BLACK LINES AND BLACK FIGURES.
DIMENSIONS HEREBY ESTABLISHED ARE SHOWN BY RED FIGURES.
LINES HEREBY DISCONTINUED ARE SHOWN BY DASHED RED LINES.

TERRACE EAST.

PARK



CITY OF NEW YORK BOROUGH OF MANHATTAN
OFFICE OF THE PRESIDENT.
DEPARTMENT OF PUBLIC WORKS
BUREAU OF ENGINEERING
CHANGE IN MAP WITHIN THE TERRITORY
BOUNDED BY PARK TERRACE WEST, W. 215TH ST.
PARK TERRACE EAST, AND W. 214TH ST.
BY CLOSING AND DISCONTINUING
A PUBLIC PLAYGROUND

DATED: APRIL 7, 1926

SCALE: 1" = 40'

H. W. Linn
CHIEF ENGINEER

J. C. Collyer
PRESIDENT OF THE
BOROUGH OF MANHATTAN

Drawn 10

Filed in the Office of the Borough President of Manhattan 10/9/27

FILE No. 21. 2

Acc. No. 25834

(B)