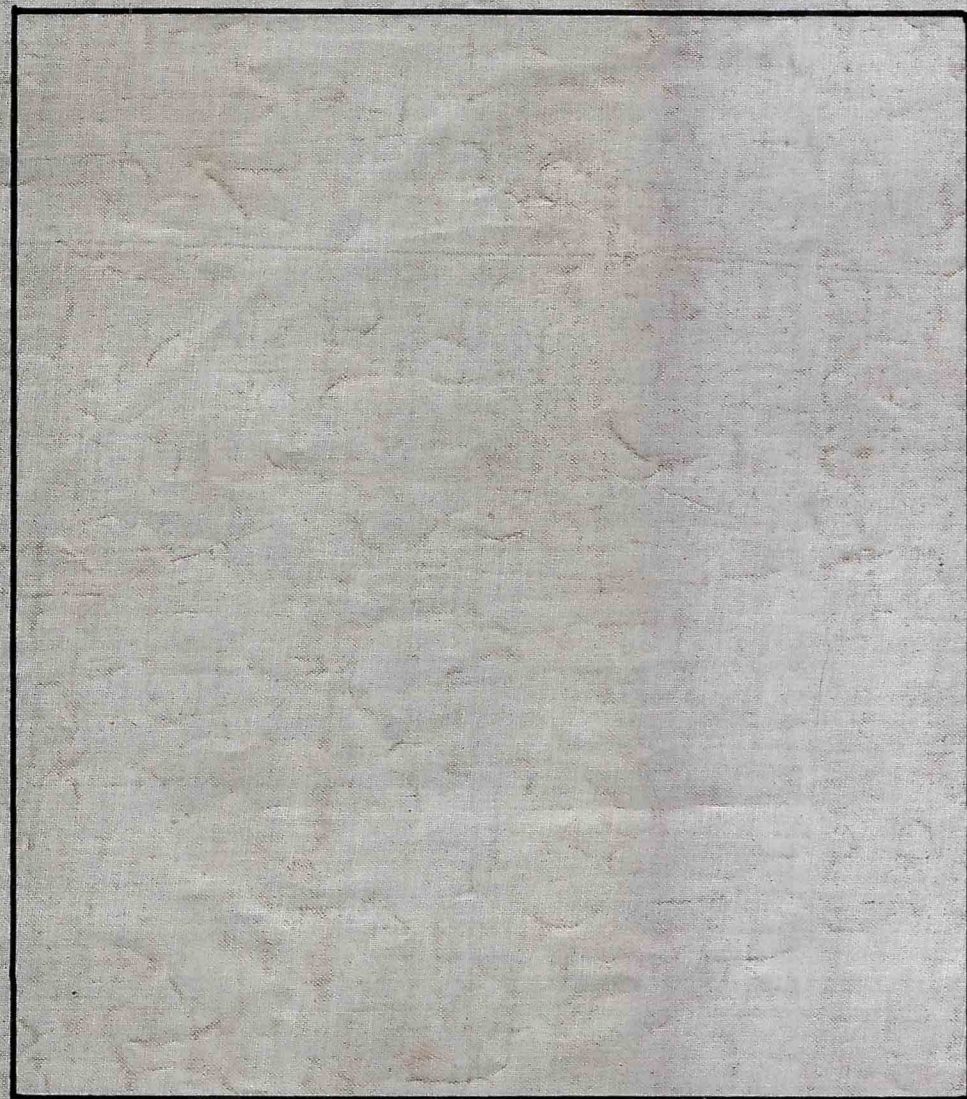
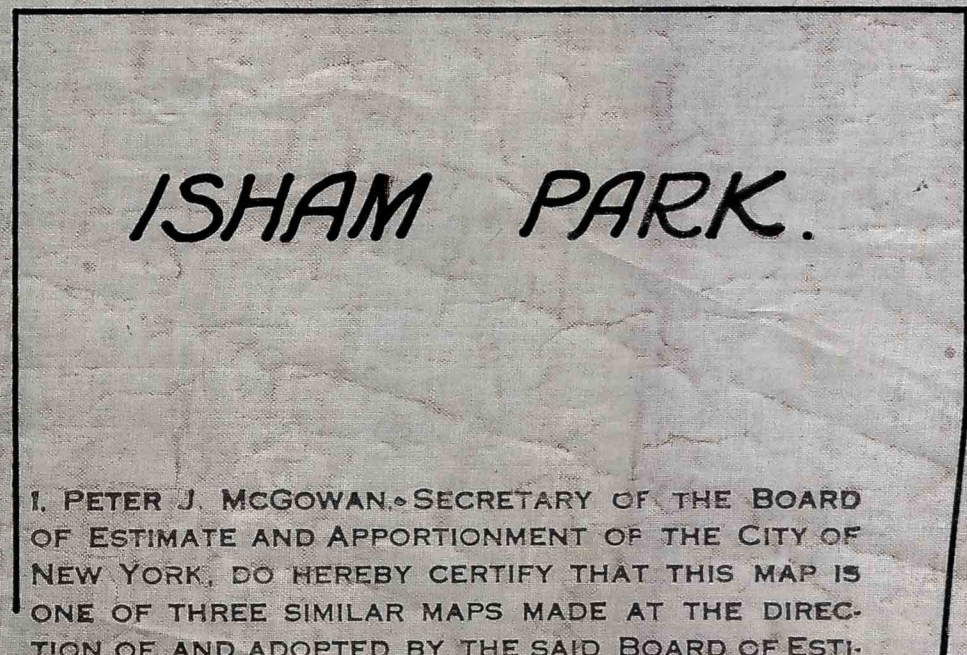


SEAMAN AVE.



W. 214TH STR.



ISHAM PARK.

I, PETER J. MCGOWAN, SECRETARY OF THE BOARD OF ESTIMATE AND APPORTIONMENT OF THE CITY OF NEW YORK, DO HEREBY CERTIFY THAT THIS MAP IS ONE OF THREE SIMILAR MAPS MADE AT THE DIRECTION OF, AND ADOPTED BY, THE SAID BOARD OF ESTIMATE AND APPORTIONMENT ON THE 9TH DAY OF JUNE 1927, AND APPROVED BY THE MAYOR ON THE 15TH DAY OF JUNE 1927 SUPERSEDING ALL MAPS HERETOFORE FILED AFFECTING THE AREA EMBRACED BY SAID MAP IN SO FAR AS IT MAKES ANY CHANGES THEREIN.

PREPARED FOR THE BOARD OF ESTIMATE AND APPORTIONMENT UNDER AUTHORITY OF THE CHARTER OF THE CITY OF NEW YORK. DATED, NEW YORK, July 19, 1927.

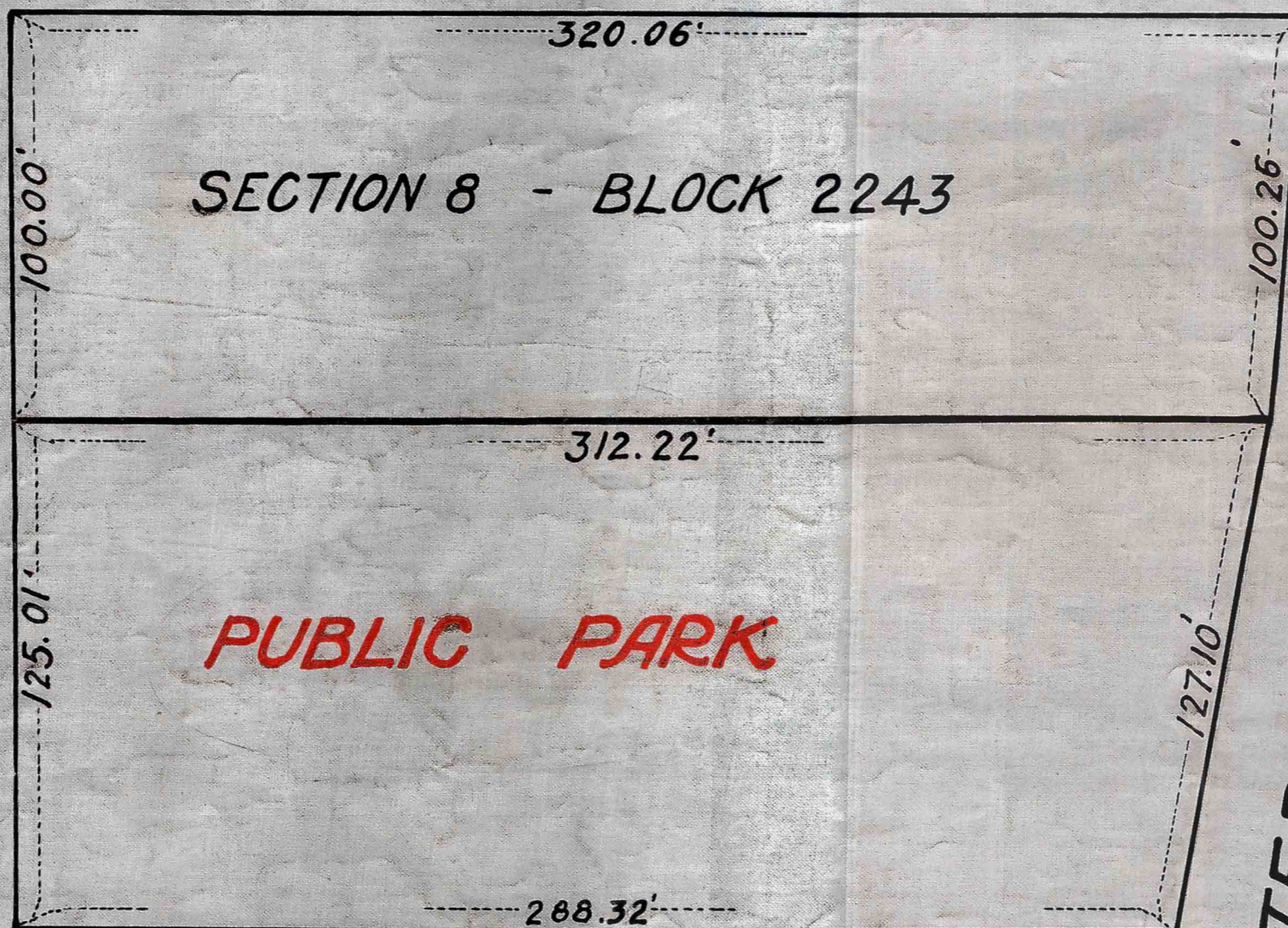
Peter J. McGowan
SECRETARY,
BOARD OF ESTIMATE AND APPORTIONMENT

DRAWN BY S.W.
CHECKED BY R.L.R.

A. J. Paak
ASSISTANT ENGINEER.

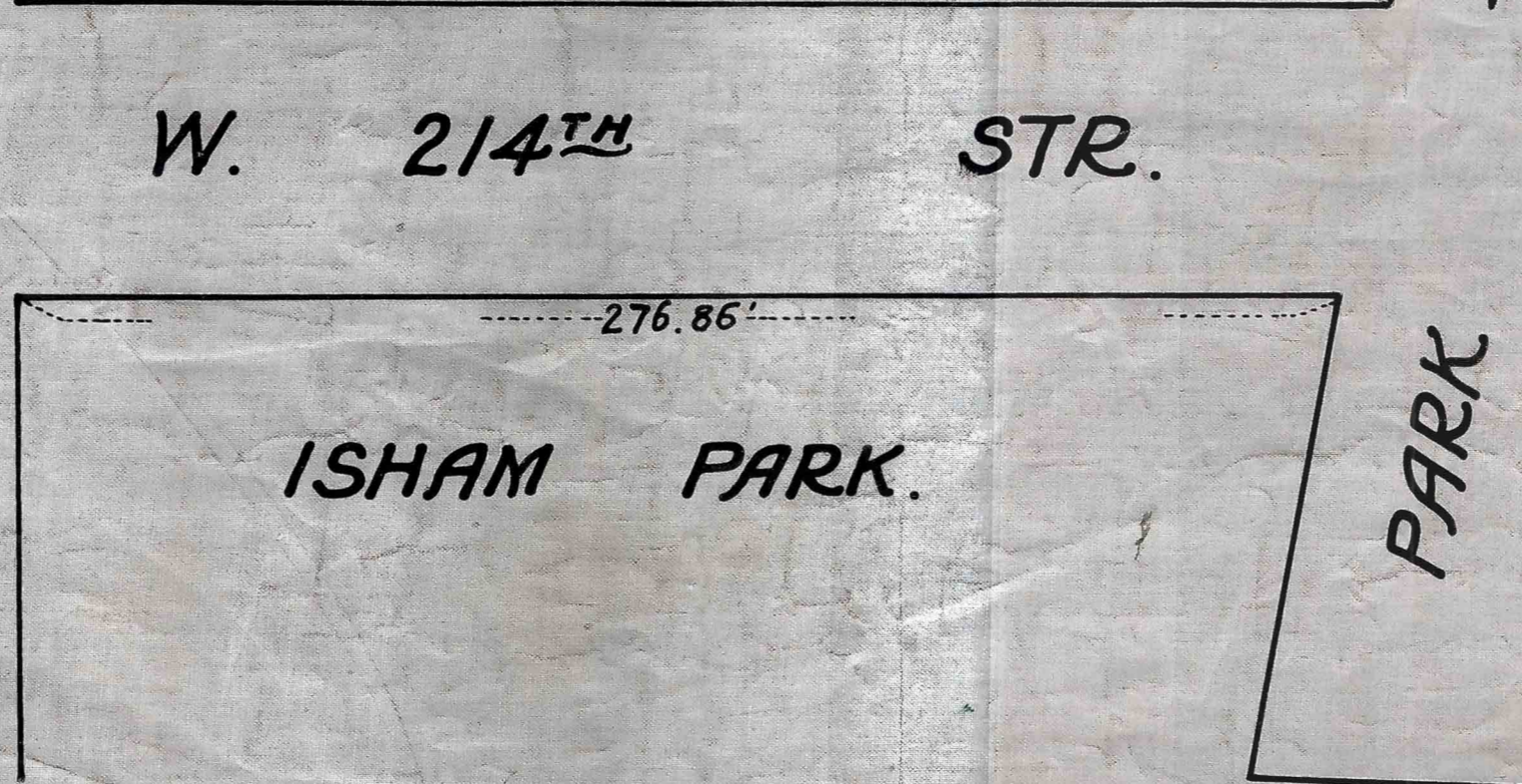
J. C. Collyer
ENGINEER OF DESIGN.

W. 215TH STR.



SECTION 8 - BLOCK 2243

PUBLIC PARK

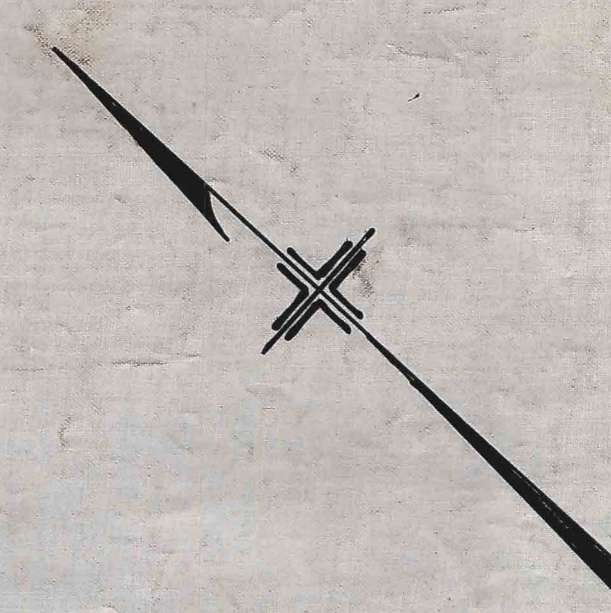


W. 214TH STR.

ISHAM PARK.

--LEGEND--
LINES AND DIMENSIONS PREVIOUSLY ESTABLISHED AND HEREBY RETAINED ARE SHOWN BY FULL BLACK LINES AND BLACK FIGURES.

TERRACE WEST.
TERRACE EAST.



CITY OF NEW YORK - BOROUGH OF MANHATTAN
OFFICE OF THE PRESIDENT.
DEPARTMENT OF PUBLIC WORKS
BUREAU OF ENGINEERING
CHANGE IN MAP WITHIN THE TERRITORY
BOUNDED BY PARK TERRACE WEST, W. 215TH ST.
PARK TERRACE EAST, AND W. 214TH ST.
BY LAYING OUT -
A PUBLIC PARK -

DATED: APRIL 14TH 1926.

SCALE: 1" = 40 FT.

W. L. ...
Acting CHIEF ENGINEER

Jacobs ...
PRES. BORO. OF MANHATTAN

Filed in Office of Borough President
7/21/27

File No. 21.2 Acc. No. 25807