

CITY OF NEW YORK
OFFICE OF THE PRESIDENT
DEPARTMENT OF PUBLIC WORKS
BUREAU OF ENGINEERING

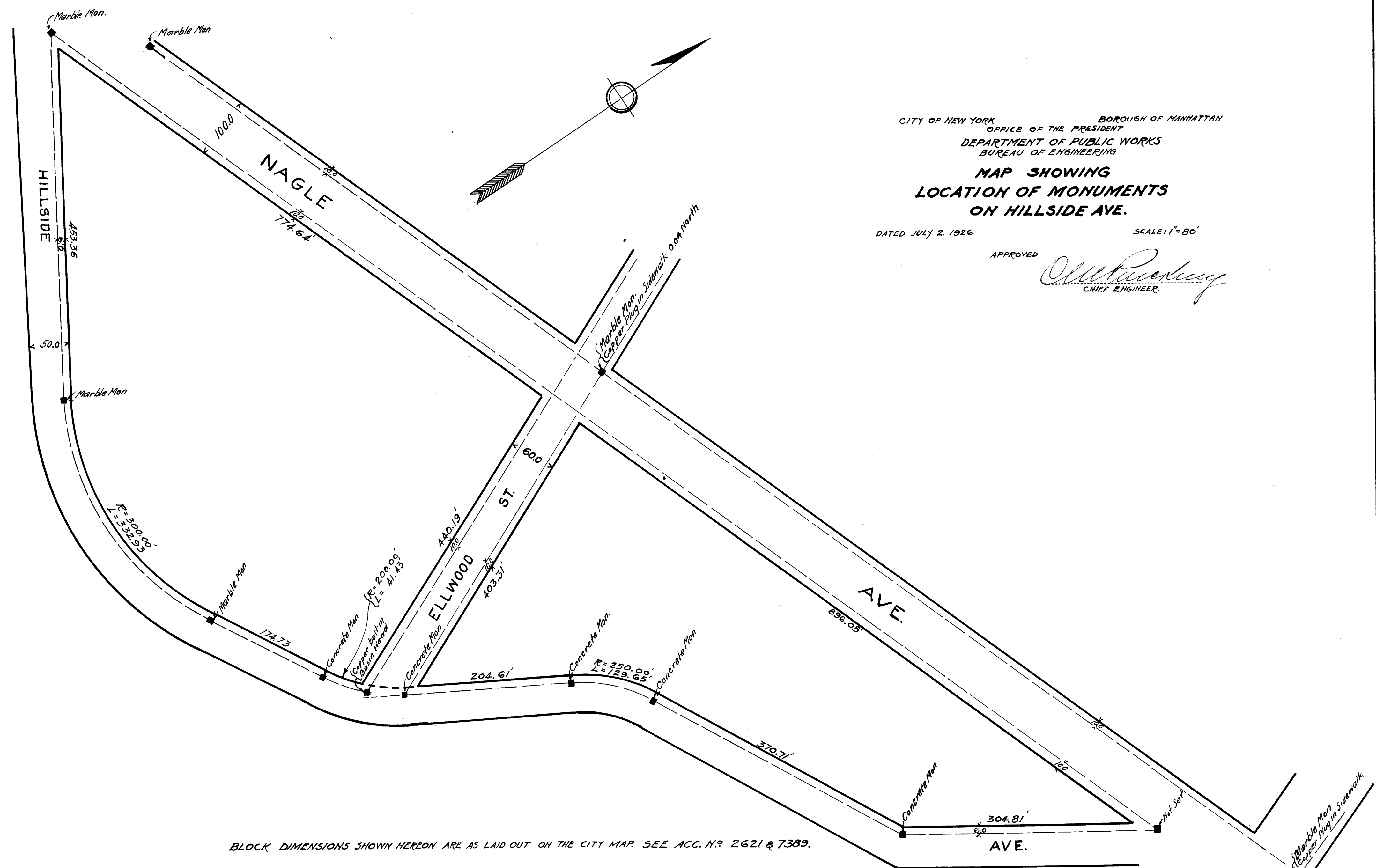
**MAP SHOWING
LOCATION OF MONUMENTS
ON HILLSIDE AVE.**

DATED JULY 2, 1926

SCALE: 1" = 80'

APPROVED

W. P. ...
CHIEF ENGINEER



BLOCK DIMENSIONS SHOWN HEREON ARE AS LAID OUT ON THE CITY MAP. SEE ACC. N. 2621 & 7389.

DRAWN BY G.E. GREGORY
CHECKED BY J.E.L. Ryan
J. H. ...
ASS'T ENGINEER

H. J. ...
ACTIVE ENGINEER IN CHARGE
DIVISION OF DESIGN

B

B

FILE NO. 88.24

ACC. NO. 25591

Drawn 9