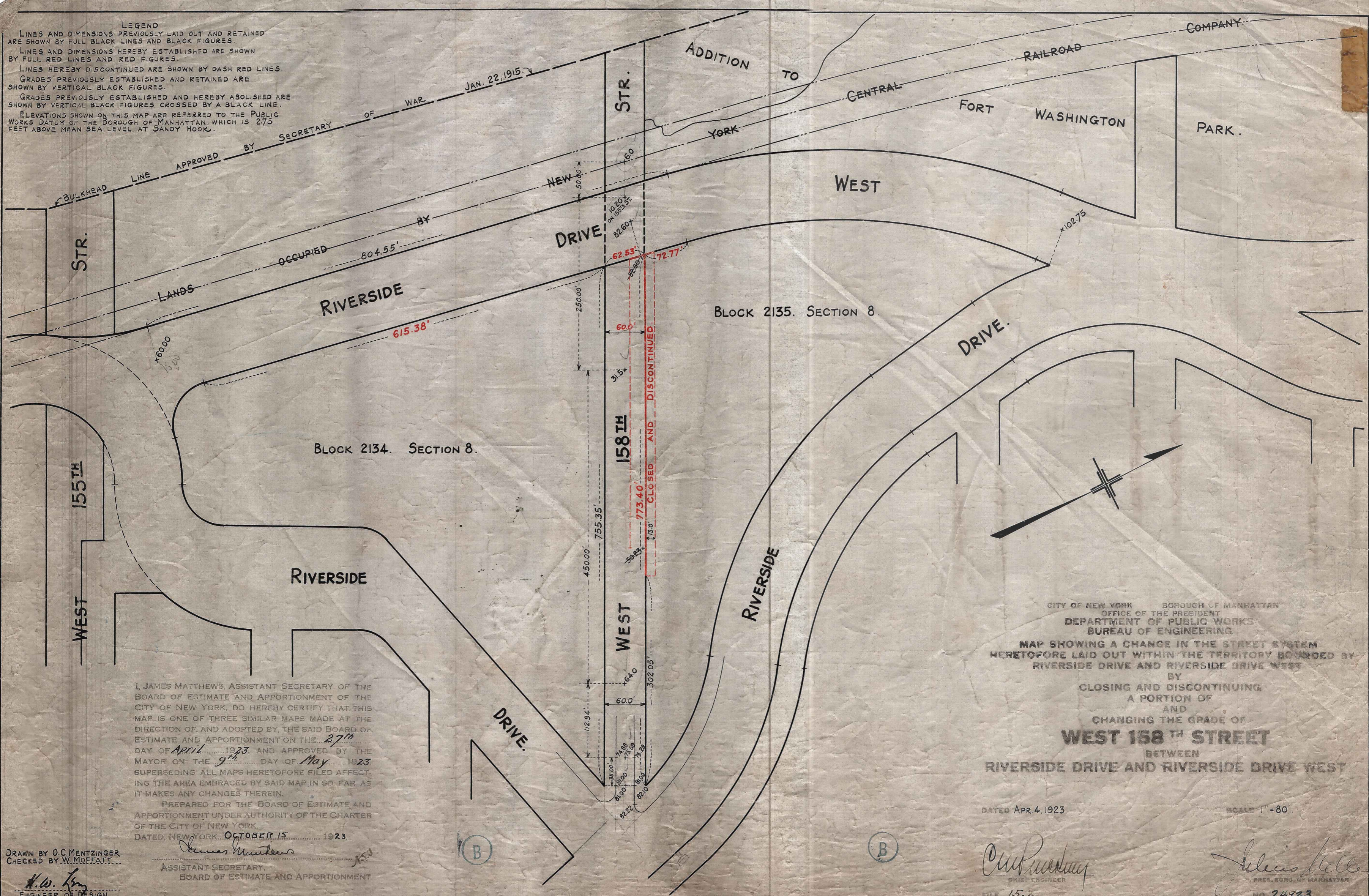


**LEGEND**  
 LINES AND DIMENSIONS PREVIOUSLY LAID OUT AND RETAINED ARE SHOWN BY FULL BLACK LINES AND BLACK FIGURES.  
 LINES AND DIMENSIONS HEREBY ESTABLISHED ARE SHOWN BY FULL RED LINES AND RED FIGURES.  
 LINES HEREBY DISCONTINUED ARE SHOWN BY DASH RED LINES.  
 GRADES PREVIOUSLY ESTABLISHED AND RETAINED ARE SHOWN BY VERTICAL BLACK FIGURES.  
 GRADES PREVIOUSLY ESTABLISHED AND HEREBY ABOLISHED ARE SHOWN BY VERTICAL BLACK FIGURES CROSSED BY A BLACK LINE.  
 ELEVATIONS SHOWN ON THIS MAP ARE REFERRED TO THE PUBLIC WORKS DATUM OF THE BOROUGH OF MANHATTAN, WHICH IS 2.75 FEET ABOVE MEAN SEA LEVEL AT SANDY HOOK.



I, JAMES MATTHEWS, ASSISTANT SECRETARY OF THE BOARD OF ESTIMATE AND APPORTIONMENT OF THE CITY OF NEW YORK, DO HEREBY CERTIFY THAT THIS MAP IS ONE OF THREE SIMILAR MAPS MADE AT THE DIRECTION OF, AND ADOPTED BY, THE SAID BOARD OF ESTIMATE AND APPORTIONMENT ON THE 27<sup>th</sup> DAY OF April 1923, AND APPROVED BY THE MAYOR ON THE 9<sup>th</sup> DAY OF May 1923 SUPERSIDING ALL MAPS HERETOFORE FILED AFFECTING THE AREA EMBRACED BY SAID MAP IN SO FAR AS IT MAKES ANY CHANGES THEREIN.  
 PREPARED FOR THE BOARD OF ESTIMATE AND APPORTIONMENT UNDER AUTHORITY OF THE CHARTER OF THE CITY OF NEW YORK.  
 DATED, NEW YORK, OCTOBER 15 1923.

*James Matthews*  
 ASSISTANT SECRETARY,  
 BOARD OF ESTIMATE AND APPORTIONMENT

DRAWN BY O.C. MENTZINGER.  
 CHECKED BY W. MOFFATT.  
*H.W. Long*  
 ENGINEER OF DESIGN.

CITY OF NEW YORK    BOROUGH OF MANHATTAN  
 OFFICE OF THE PRESIDENT  
 DEPARTMENT OF PUBLIC WORKS  
 BUREAU OF ENGINEERING  
 MAP SHOWING A CHANGE IN THE STREET SYSTEM  
 HERETOFORE LAID OUT WITHIN THE TERRITORY BOUNDED BY  
 RIVERSIDE DRIVE AND RIVERSIDE DRIVE WEST  
 BY  
 CLOSING AND DISCONTINUING  
 A PORTION OF  
 AND  
 CHANGING THE GRADE OF  
**WEST 158<sup>TH</sup> STREET**  
 BETWEEN  
 RIVERSIDE DRIVE AND RIVERSIDE DRIVE WEST

DATED APR. 4, 1923.

SCALE 1" = 80'

*Chas. P. ...*  
 CHIEF ENGINEER  
 FILE 15.2

*James Helle*  
 PRES. BORO. OF MANHATTAN  
 NO 24923

Received for file in Div. of designs  
 10/11/23  
*R.H. ...*