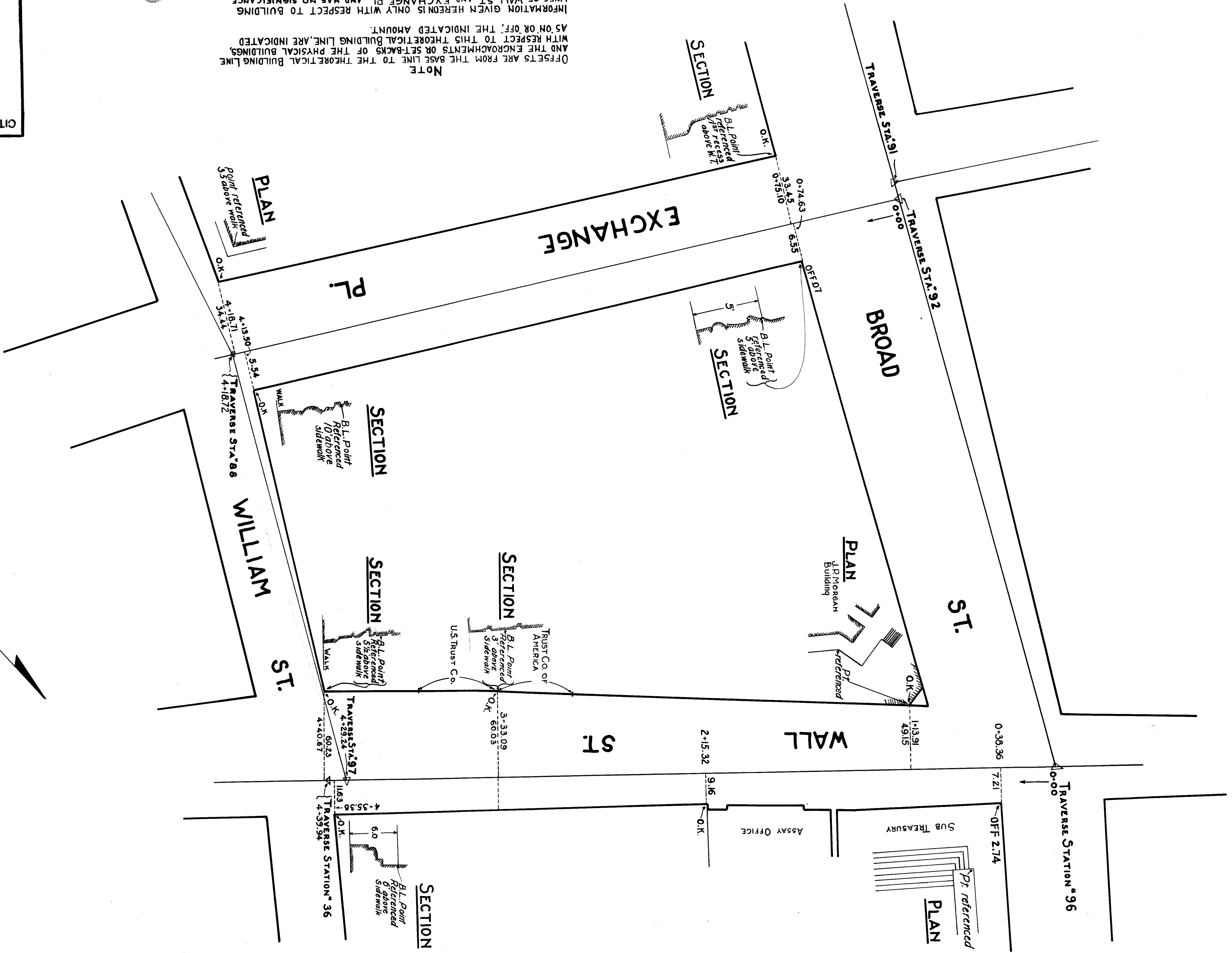


ENGINEER OF DESIGN:
 M. W. [Signature]
 DRAWN BY M. GOLDBERG
 CHECKED BY M. MOFFATT

F-118
 290

CITY OF NEW YORK BOROUGH OF MANHATTAN
 OFFICE OF THE PRESIDENT
 BUREAU OF ENGINEERING
 STREET LINES
 WALL ST AND EXCHANGE PL.
 BETWEEN WILLIAM AND BROAD STS.
 APPROVED [Signature]
 1923
 CHIEF ENGINEER
 DATE: MAY 28, 1923

NOTE
 OFFSETS ARE FROM THE BASE LINE TO THE THEORETICAL BUILDING LINE
 AND THE ENCROACHMENTS OR SET-BACKS OF THE PHYSICAL BUILDINGS,
 WITH RESPECT TO THIS THEORETICAL BUILDING LINE, ARE INDICATED
 AS ON OR OFF; THE INDICATED AMOUNT.
 INFORMATION GIVEN HEREON IS ONLY WITH RESPECT TO BUILDING
 LINES OF WALL ST AND EXCHANGE PL. AND HAS NO SIGNIFICANCE
 WITH RESPECT TO THE BUILDING LINES OF WILLIAM AND BROAD STS.



FILE NO. 73.2 Acc No. 24857

B

B

F-118
 290