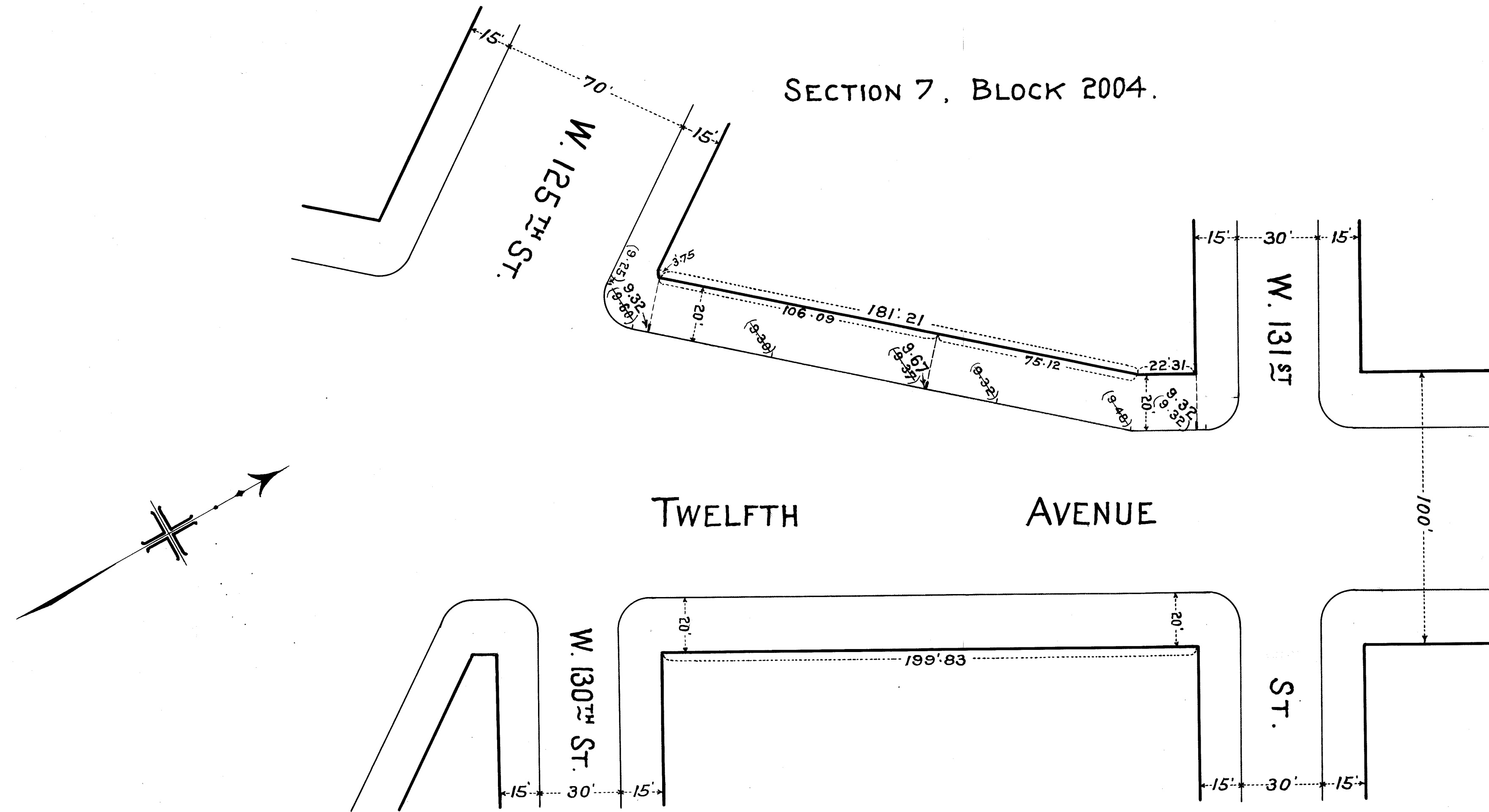


SECTION 7, BLOCK 2004.



I, JAMES MATTHEWS, ASSISTANT SECRETARY OF THE BOARD OF ESTIMATE AND APPOINTMENT OF THE CITY OF NEW YORK DO HEREBY CERTIFY THAT THIS MAP IS ONE OF THREE SIMILAR MAPS MADE AT THE DIRECTION OF, AND ADOPTED BY, THE SAID BOARD OF ESTIMATE AND APPOINTMENT ON THE 5TH DAY OF JANUARY, 1923, AND APPROVED BY THE MAYOR ON THE 13TH DAY OF JANUARY, 1923, SUPERSEDING ALL MAPS HERETOFORE FILED RELATING TO THE AREA EMBRACED BY SAID MAP AS FAR AS IT MAKES ANY CHANGES THEREIN.

PREPARED FOR THE BOARD OF ESTIMATE AND APPOINTMENT UNDER AUTHORITY OF THE CHARTER OF THE CITY OF NEW YORK DATED IN NEW YORK, APRIL 26, 1923.

James Matthews
ASSISTANT SECRETARY
BOARD OF ESTIMATE AND APPOINTMENT

— LEGEND —

GRADES HEREBY ESTABLISHED ARE SHOWN BY VERTICAL RED FIGURES.
EXISTING SURFACE ELEVATIONS ARE SHOWN BY VERTICAL BLACK FIGURES ENCLOSED IN A PARENTHESIS AND WHERE HEREBY DISCONTINUED ARE CROSSED BY A BLACK LINE.
ELEVATIONS SHOWN ON THIS MAP ARE REFERRED TO THE PUBLIC WORKS DATUM OF THE BOROUGH OF MANHATTAN, WHICH IS 2.75 FEET ABOVE MEAN SEA LEVEL AT SANDY HOOK.

CITY OF NEW YORK BOROUGH OF MANHATTAN
OFFICE OF THE PRESIDENT
DEPARTMENT OF PUBLIC WORKS
BUREAU OF ENGINEERING

MAP SHOWING A CHANGE OF GRADE ON
THE WESTERLY SIDE OF
TWELFTH AVENUE
BETWEEN
WEST 125TH ST. & WEST 131ST ST.

DATED JULY 17, 1922. SCALE: 1 IN. = 30 FT.

W. R. Ruckelshaus
CHIEF ENGINEER

J. B. Johnson
ACTING PRES. BORO. OF MANHATTAN

FILE 42.2 NO. 24788

DRAWN BY A.E. GRUBB
CHECKED BY W. MOFFATT

H. W. Tom
ENGINEER OF DESIGN

Drawn 8

Received for Filing, May 3, 1923
R. R. Johnson
Room 2100 Municipal Bldg.