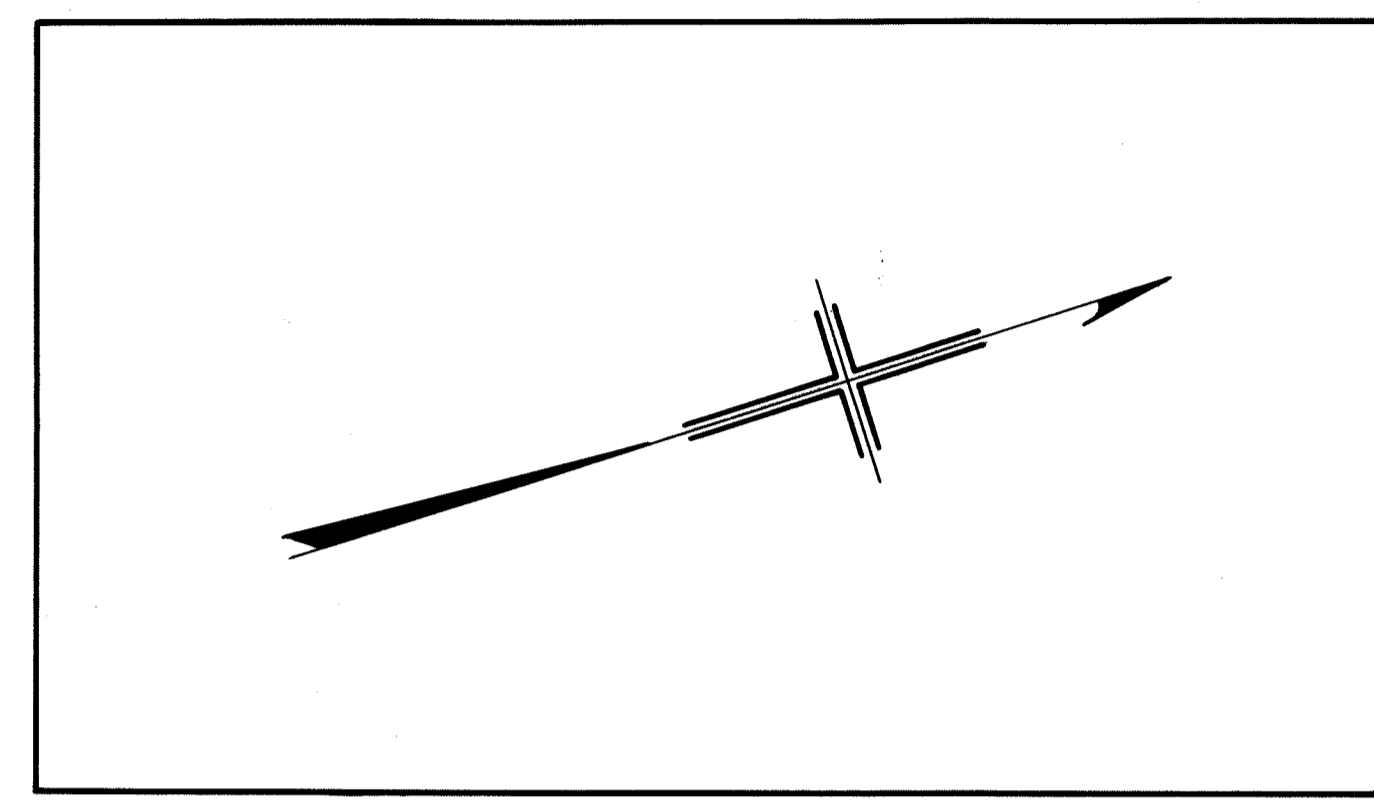
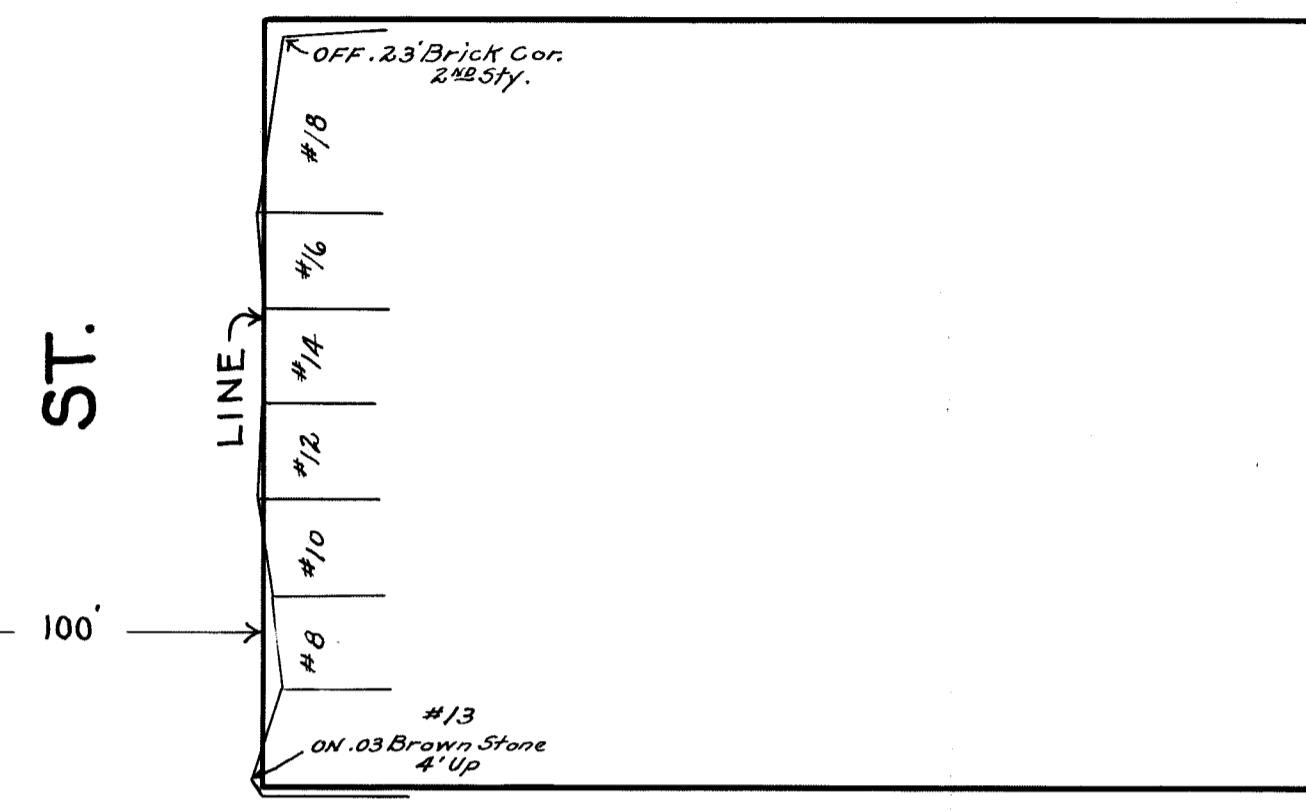
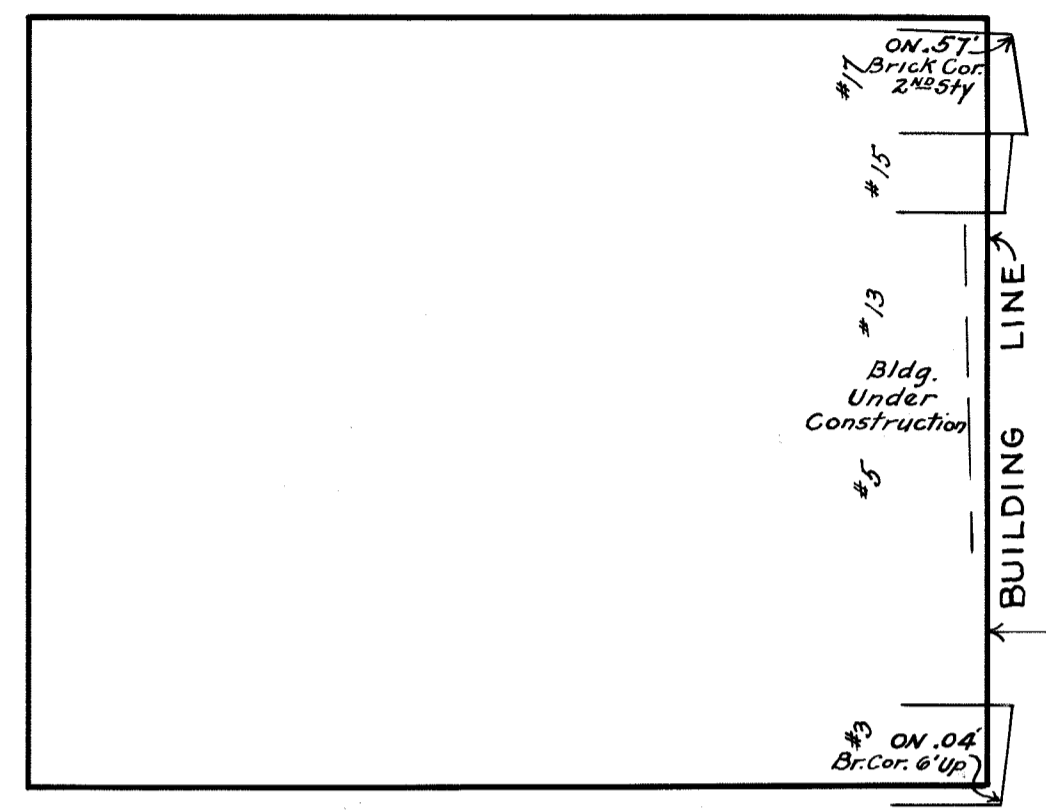


ST.

MANGIN

ST.



TOMPKINS

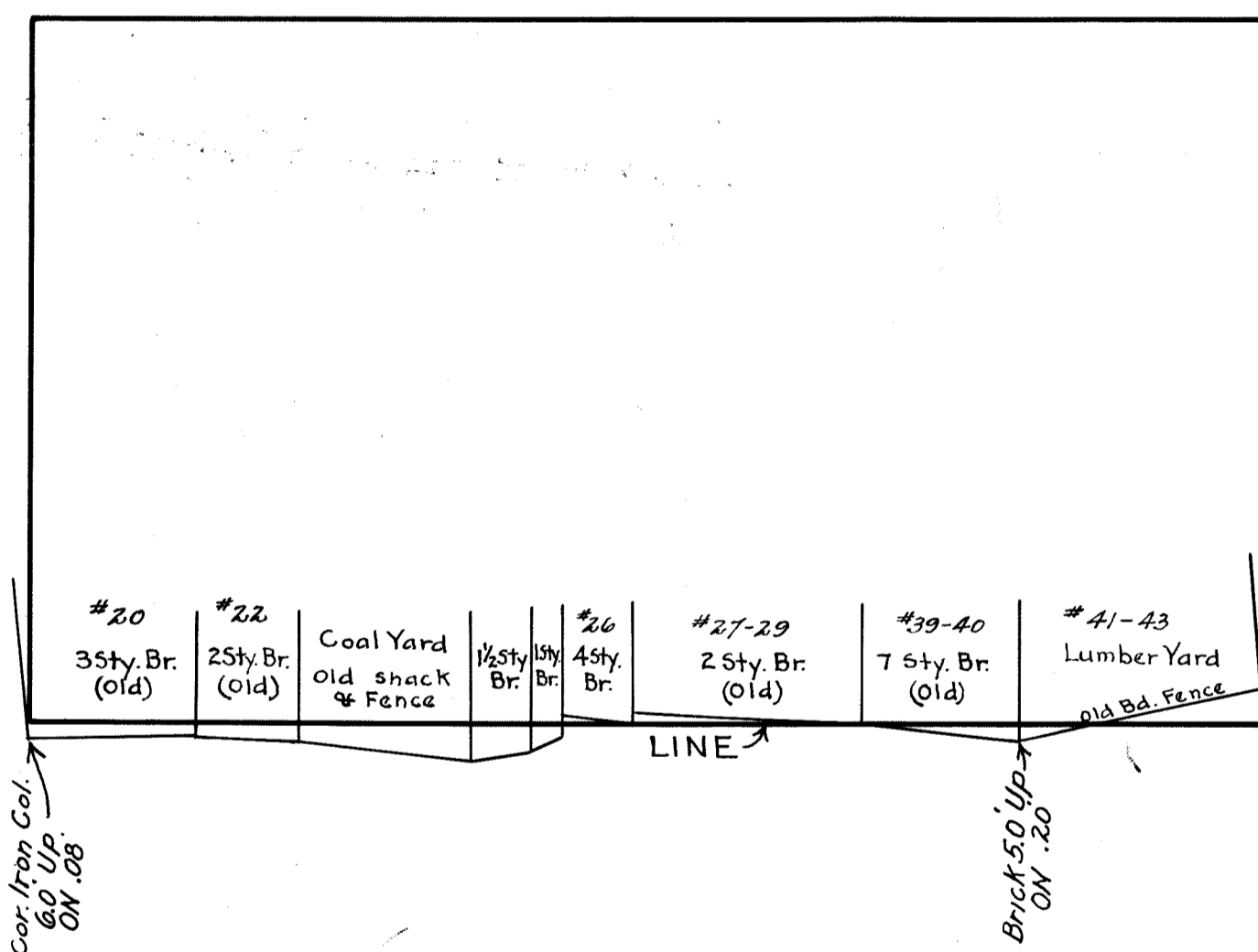
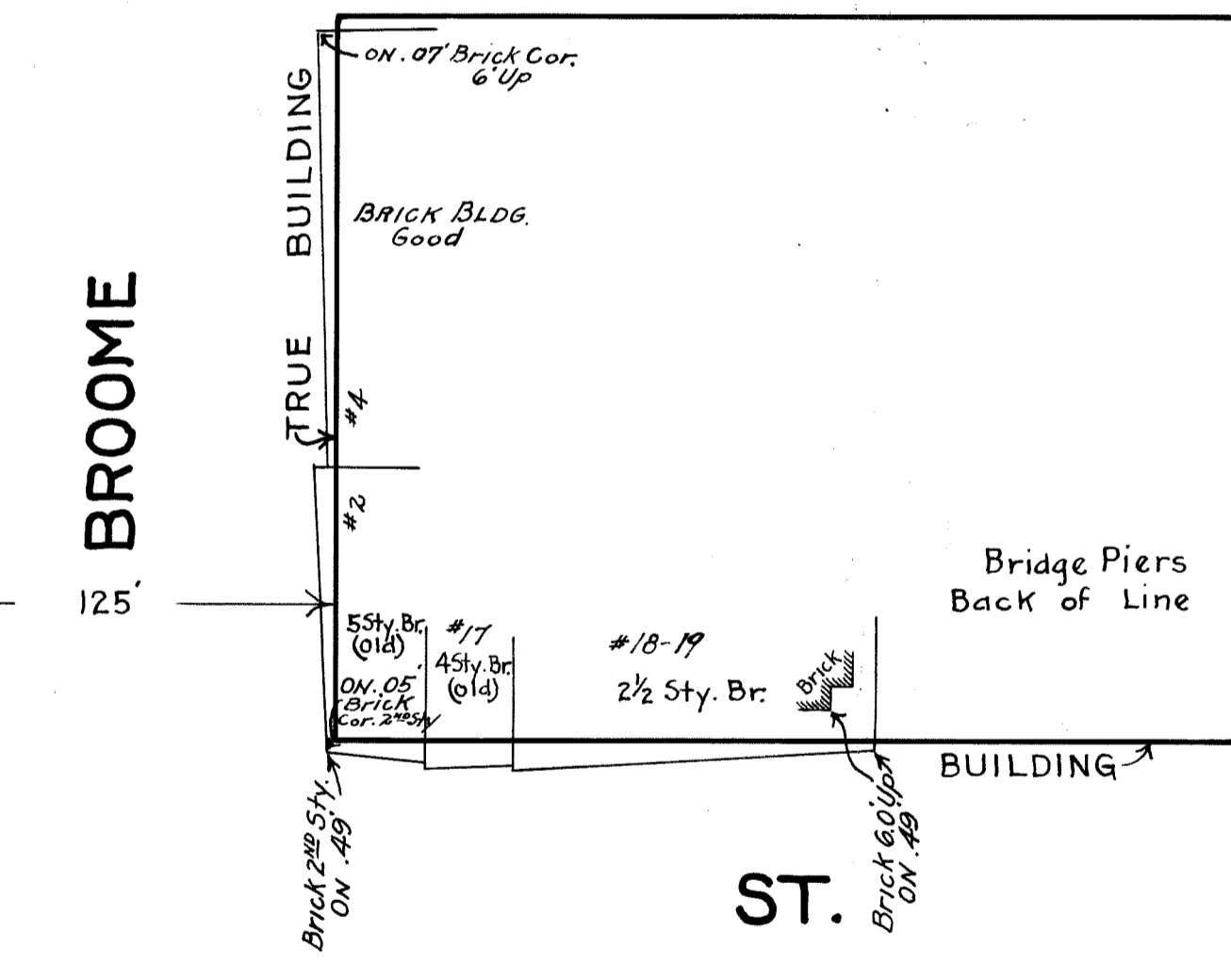
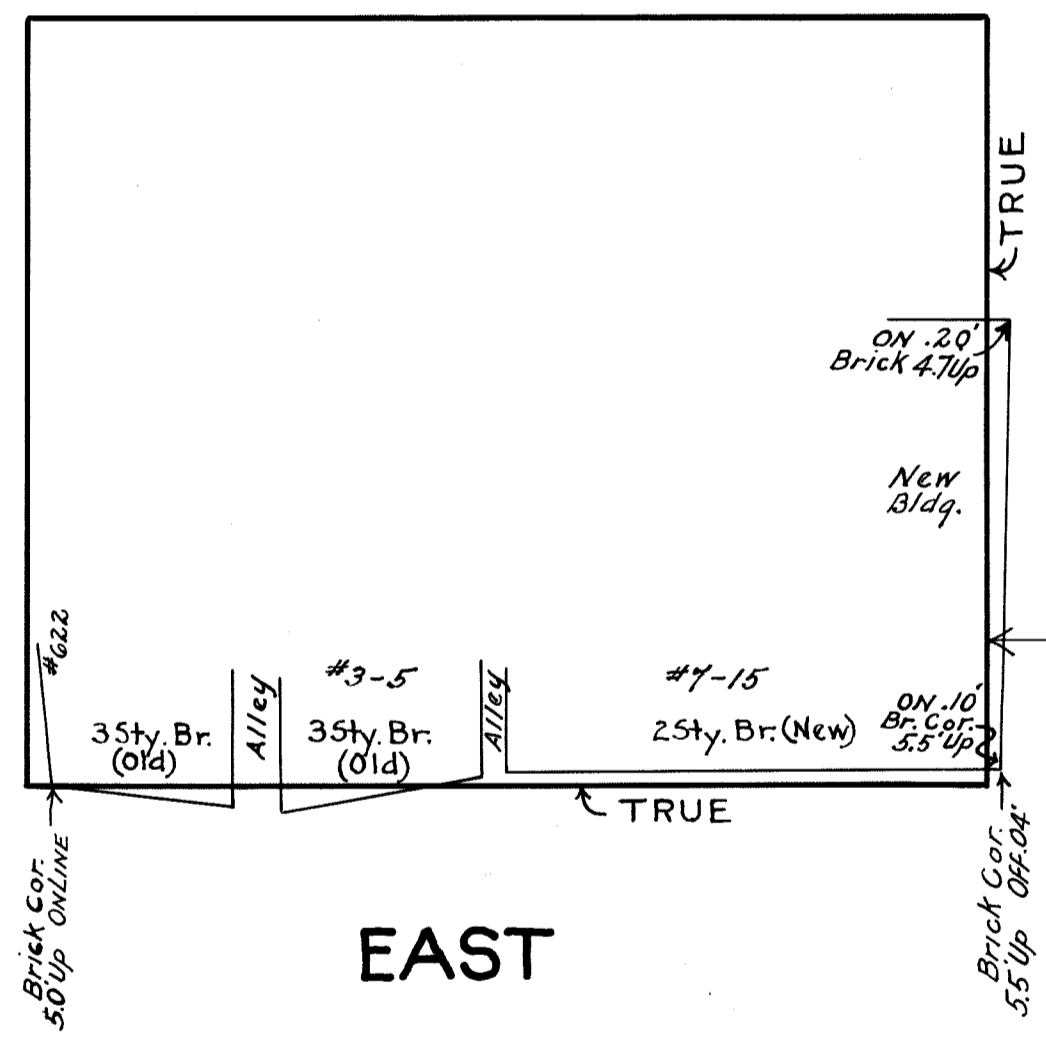
ST.

GRAND

BROOME

DELANCEY

RIVINGTON



EAST

ST.

NOTE:—
 PLOTTING OF PHYSICAL BUILDING FRONTS WITH REFERENCE TO THE TRUE BUILDING LINE NOT DRAWN TO SCALE.

DRAWN BY W. MOFFATT
 CHECKED BY A. J. PECK
 H. W. King
 ENGINEER OF DESIGN.

CITY OF NEW YORK BOROUGH OF MANHATTAN
 OFFICE OF THE PRESIDENT
 BUREAU OF ENGINEERING
STREET LINES
 OF
BROOME STREET
 (EAST ST. TO MANGIN ST.)
EAST STREET
 (GRAND ST. TO RIVINGTON ST.)
 APPROVED May 11 - 1922 ADOPTED MAY 11 - 1922
 Chief Engineer - Comm. of Public Works

FILE No. 52.2 Acc. No. 24454

Drawer 8

B