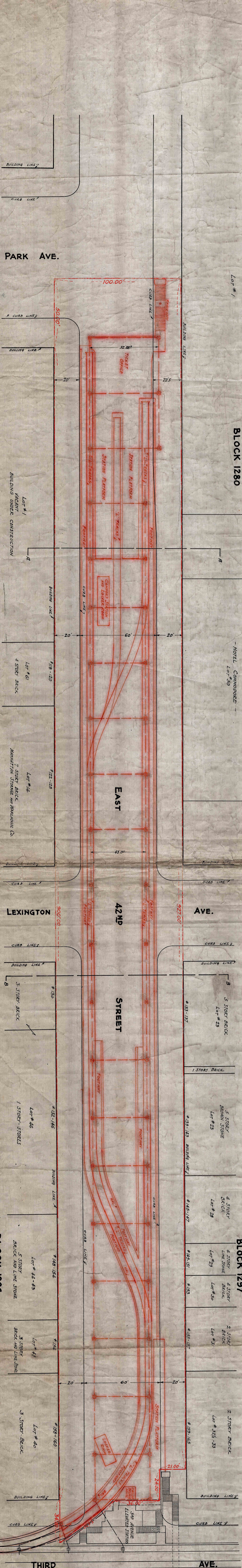


SECTION A-A - LOOKING EAST
SCALE 1"=10'

SECTION B-B - LOOKING EAST
SCALE 1"=10'

PROFILE -
SCALE 1"=20'



SECTION A-A - LOOKING EAST
SCALE 1"=10'

SECTION B-B - LOOKING EAST
SCALE 1"=10'

PLAN -

DRAFT DAMAGE MAP

IN THE MATTER OF ACQUIRING TITLE TO THE TRACKS, STRUCTURE, STATIONS & APPURTENANCES OF THE MANHATTAN RAILWAY COMPANY IN EAST 42ND STREET IN THE BOROUGH OF MANHATTAN CITY OF NEW YORK, AND ALSO TO THE RIGHTS, EASEMENTS AND FRANCHISES OF SAID MANHATTAN RAILWAY COMPANY TO CONSTRUCT, MAINTAIN AND USE SAID TRACKS, STRUCTURE, STATIONS AND APPURTENANCES.

DEC. 28, 1921.

SCALE 1"=20'