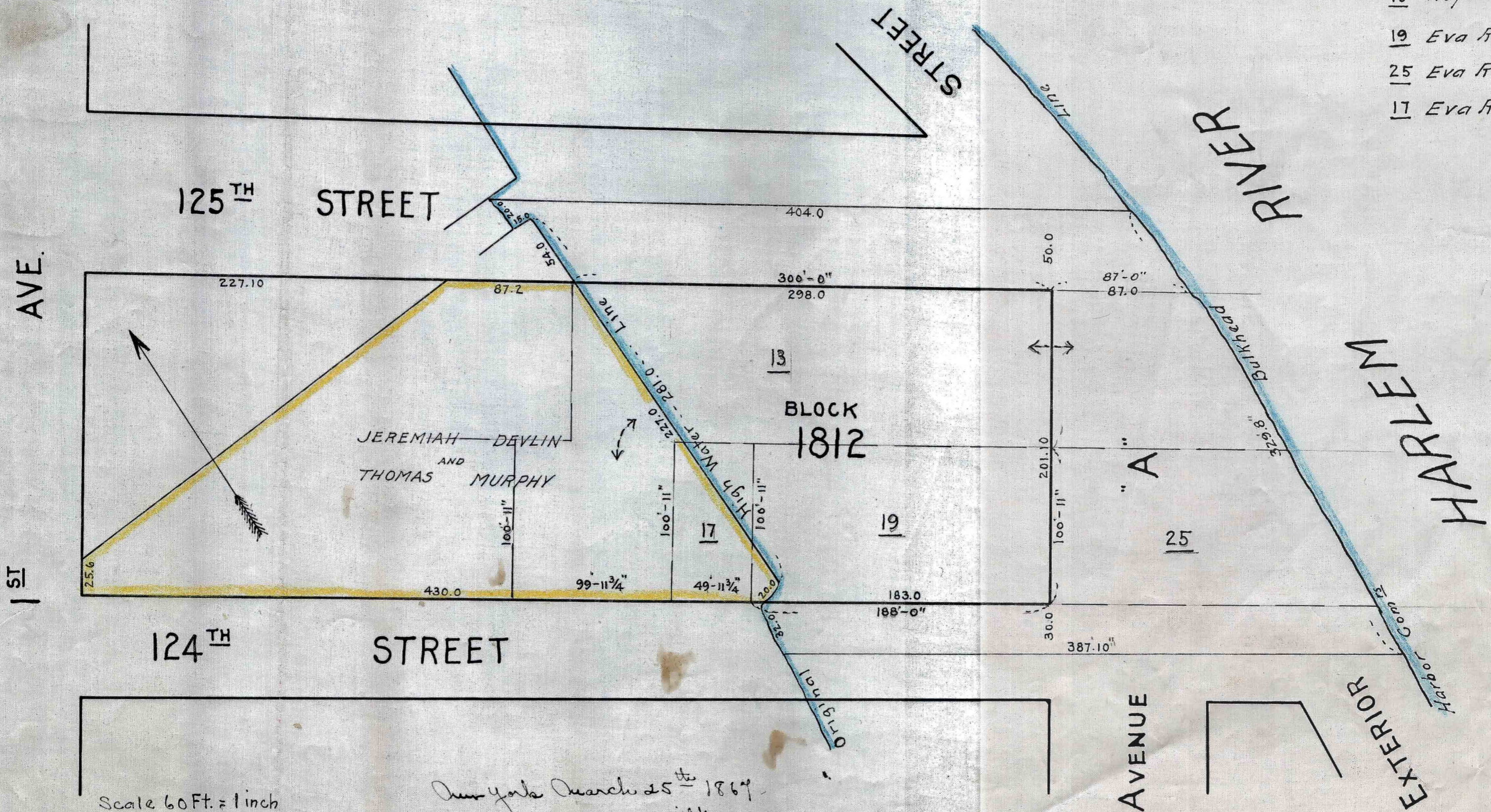


Traced from a map attached to description
of a water grant made to THOMAS MURPHY
Sept. 25-1867 Book I Pages 410 to 414

- 13 Rogers and Ross
- 19 Eva Rogers
- 25 Eva Rogers
- 17 Eva Rogers



Scale 60 Ft. = 1 inch

New York March 25th 1867
Geo Wm Smith
City Surveyor

(B)

(B)