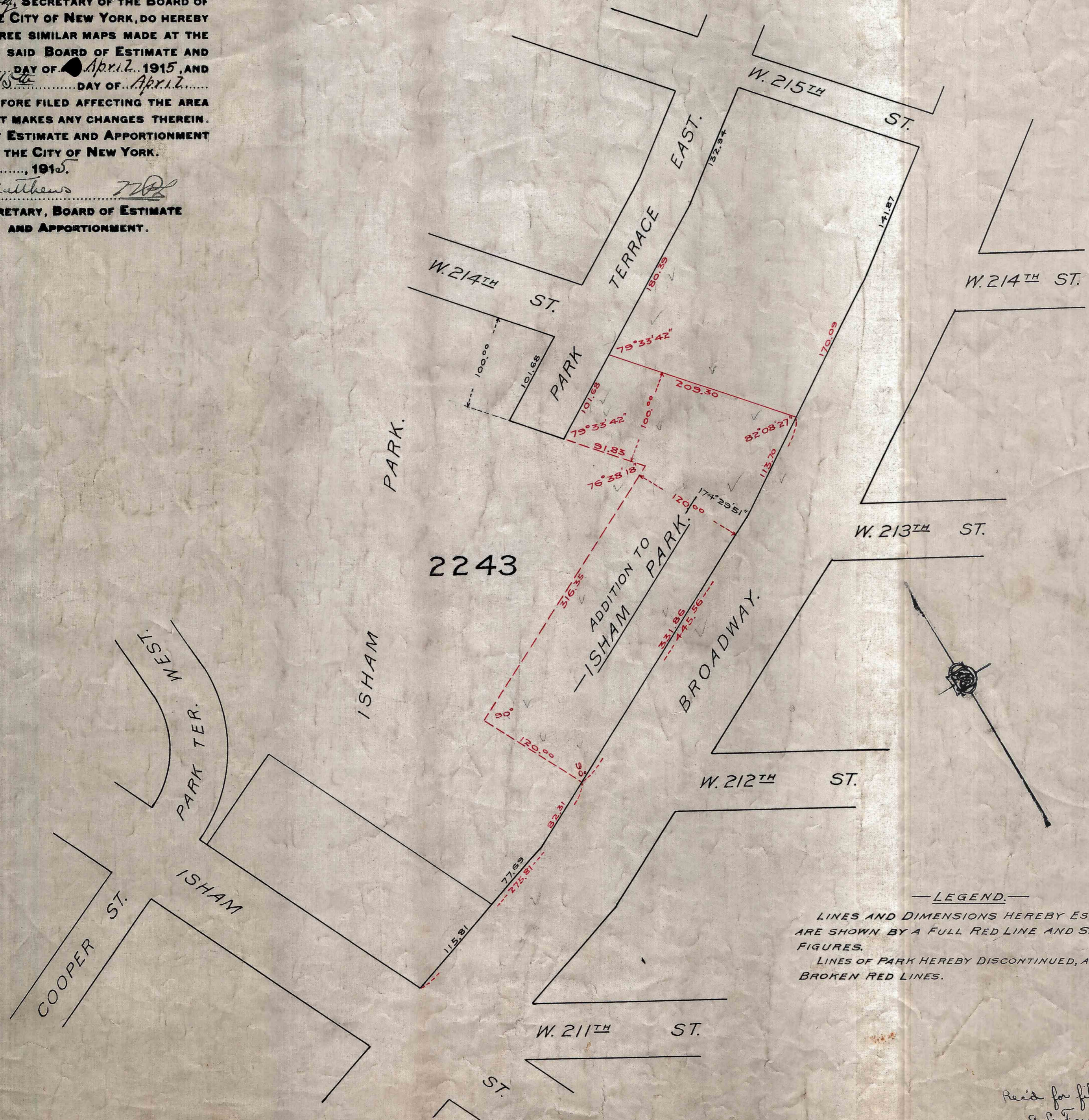


I, *James Matthews*, Acting, SECRETARY OF THE BOARD OF ESTIMATE AND APPORTIONMENT OF THE CITY OF NEW YORK, DO HEREBY CERTIFY THAT THIS MAP IS ONE OF THREE SIMILAR MAPS MADE AT THE DIRECTION OF, AND ADOPTED BY, THE SAID BOARD OF ESTIMATE AND APPORTIONMENT ON THE *9th* DAY OF *April*, 1915, AND APPROVED BY THE MAYOR ON THE *15th* DAY OF *April*, 1915, SUPERSEDING ALL MAPS HERETOFORE FILED AFFECTING THE AREA EMBRACED BY SAID MAP IN SO FAR AS IT MAKES ANY CHANGES THEREIN.

PREPARED FOR THE BOARD OF ESTIMATE AND APPORTIONMENT UNDER AUTHORITY OF THE CHARTER OF THE CITY OF NEW YORK. DATED, NEW YORK, *April 16*, 1915.
James Matthews
 Acting - SECRETARY, BOARD OF ESTIMATE AND APPORTIONMENT.



—LEGEND.—
 LINES AND DIMENSIONS HEREBY ESTABLISHED, ARE SHOWN BY A FULL RED LINE AND SMALL RED FIGURES.
 LINES OF PARK HEREBY DISCONTINUED, ARE SHOWN BY BROKEN RED LINES.

CITY OF NEW YORK BOROUGH OF MANHATTAN
 OFFICE OF THE PRESIDENT
 BUREAU OF DESIGN & SURVEY
AN ADDITION TO ISHAM PARK
 BETWEEN
BROADWAY & PARK TERRACE EAST
 SOUTH OF W. 214TH ST.

DATED *MARCH 2nd* 1915. SCALE *1/16"=80 FT.*
Walter Appleby *James M. Matthews*
 ASST. ENGINEER IN CHARGE PRESIDENT BORO. OF MANHATTAN
 FILE NO. **D 89. 25** Acc. No. **21752**

Recd for filing, April 16, 1915.
G. L. Farrington