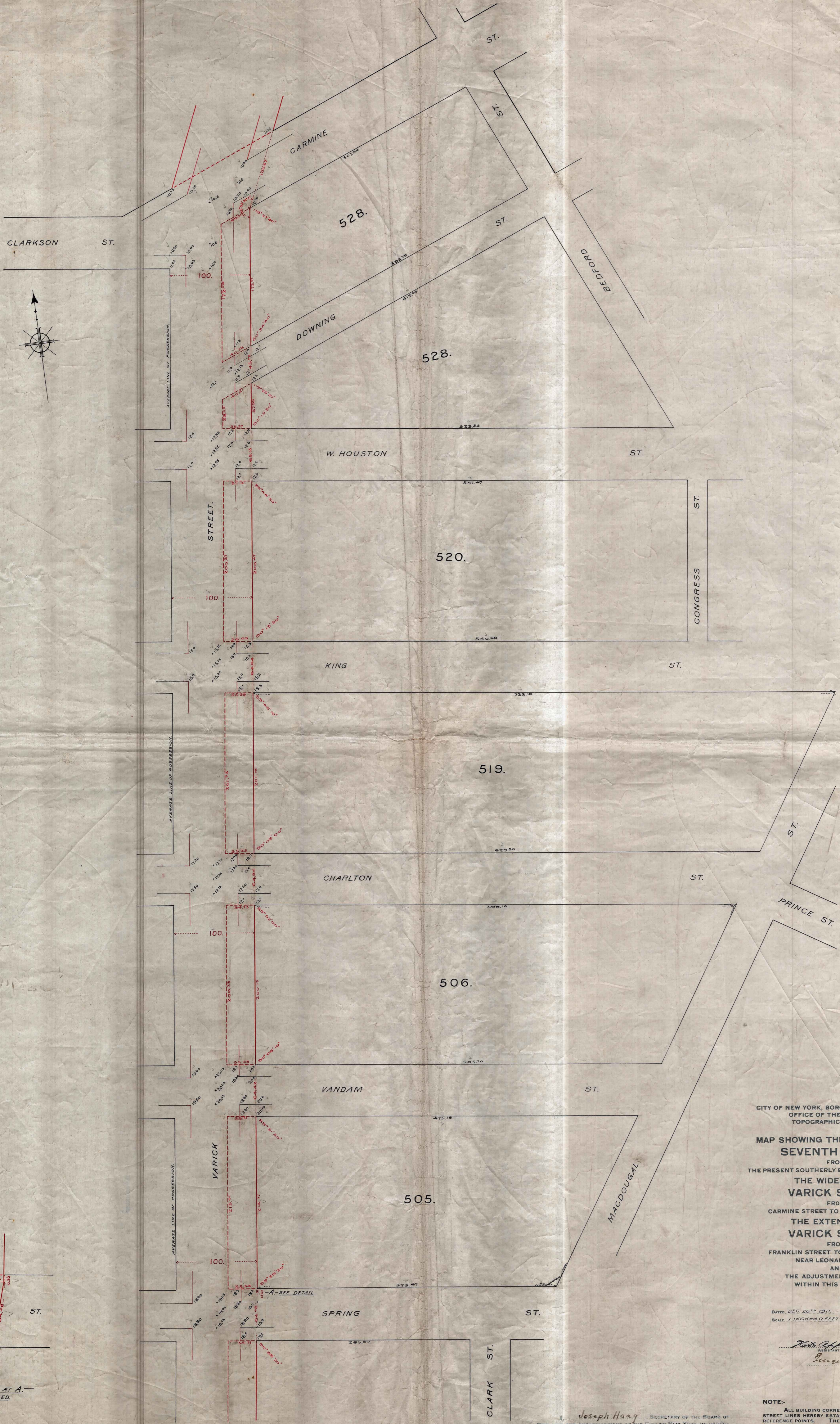


21265-A



CITY OF NEW YORK, BOROUGH OF MANHATTAN,
OFFICE OF THE PRESIDENT,
TOPOGRAPHICAL BUREAU.

MAP SHOWING THE EXTENSION OF
SEVENTH AVENUE
FROM
THE PRESENT SOUTHERLY END TO CARMINE STREET;
THE WIDENING OF
VARICK STREET
FROM
CARMINE STREET TO FRANKLIN STREET;
THE EXTENSION OF
VARICK STREET
FROM
FRANKLIN STREET TO WEST BROADWAY
NEAR LEONARD STREET;
AND
THE ADJUSTMENT OF GRADES
WITHIN THIS TERRITORY.

DATED DEC. 26TH 1911.
SCALE 1 INCH = 40 FEET

John C. Phillips
PRESIDENT OF THE BUREAU

Joseph Haas SECRETARY OF THE BOARD OF
ESTIMATE AND APPOINTMENT OF THE CITY OF NEW YORK, ON BEHALF
HEREBY THAT THIS MAP IS ONE OF THOSE SIMILAR MAPS MADE AT THE
DIRECTION OF AND ADOPTED BY THE GRID BOARD OF ESTIMATE AND
APPOINTMENT ON THE 21ST DAY OF March 1912, AND
APPROVED BY THE MAYOR ON THE 27TH DAY OF March
1912, SUPERSEDING ALL MAPS HERETOFORE FILED APPROVING THE AREA
EMBRACED BY SAID MAP IN SO FAR AS IT RELATES TO ANY CHANGES THEREIN
PREPARED FOR THE BOARD OF ESTIMATE AND APPOINTMENT
UNDER AUTHORITY OF THE CHARTER OF THE CITY OF NEW YORK,
DATED, NEW YORK, JUN 13, 1912

John C. Phillips
SECRETARY OF BOARD OF ESTIMATE
AND APPOINTMENT

NOTE:-
ALL BUILDING CORNERS ADJACENT TO THE NEW
STREET LINES HEREBY ESTABLISHED ARE TREATED AS
REFERENCE POINTS. THE ANGLES ARE DETERMINED
BY AVERAGES OF THE LINES OF POSSESSION WITH THE
NEW STREET LINES HEREBY ESTABLISHED.
WHENEVER A DISCREPANCY EXISTS BETWEEN THE
DISTANCES AND ANGLES, THE DISTANCES SHALL GOVERN.
ELEVATIONS ON THIS MAP ARE REFERRED TO THE CITY DATUM 2.47 FEET
ABOVE UNITED STATES COAST AND GEODETIC SURVEY DATUM.
THE LINES OF POSSESSION HEREBY SHOWN FOR 27TH
AVENUE, VARICK STREET AND LINE ON FRANKLIN STREET
ARE TAKEN FROM THE LOCATIONS OF THE EXISTING
CORNERS AS SHOWN ON PLATS TO THIS DATE.

File D37-21
x D72-3

21265A