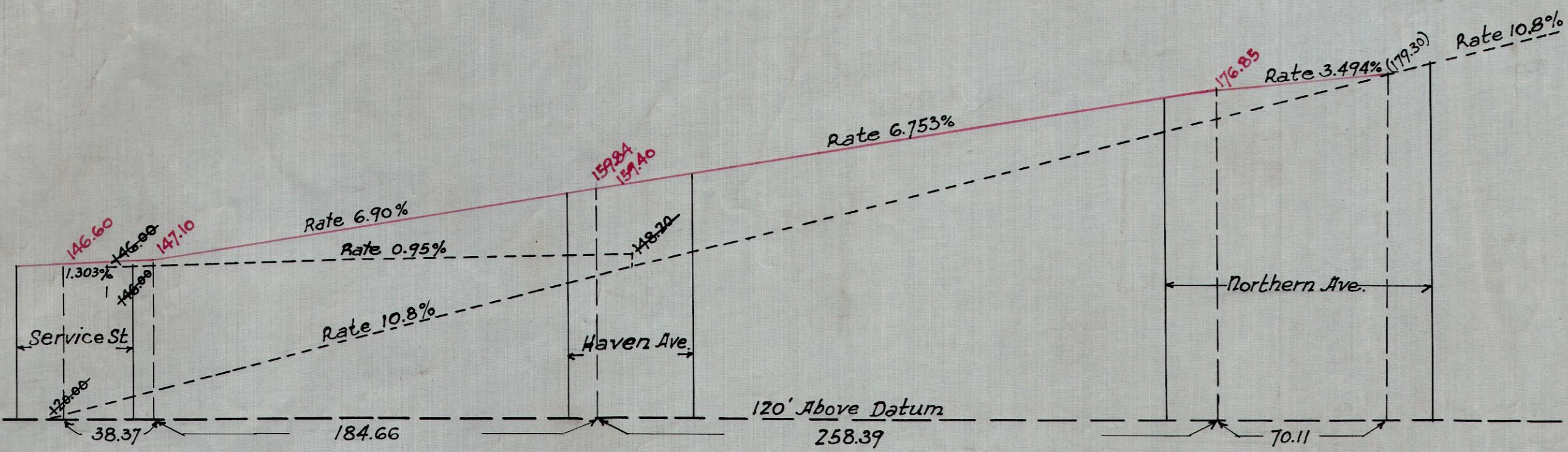
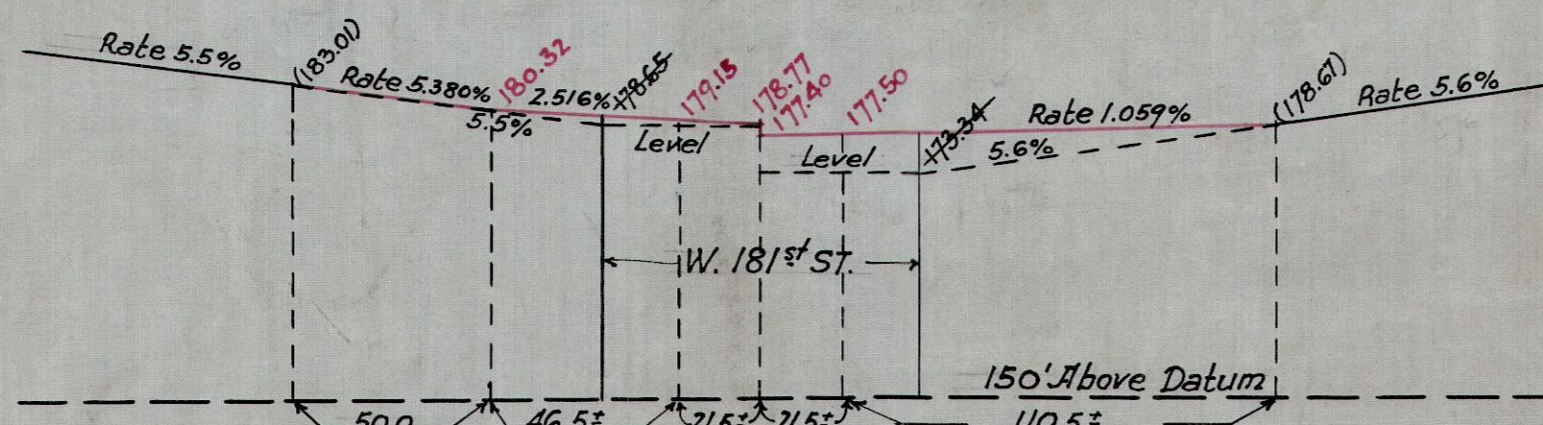


I, JOSEPH HAAG, SECRETARY OF THE BOARD OF ESTIMATE AND APPROPRIATION OF THE CITY OF NEW YORK, DO HEREBY CERTIFY THAT THIS MAP IS ONE OF THREE SIMILAR MAPS MADE AT THE DIRECTION OF, AND ADOPTED BY THE SAID BOARD OF ESTIMATE AND APPROPRIATION ON THE 27<sup>th</sup> DAY OF FEBRUARY 1914 AND APPROVED BY THE MAYOR OF THE 10<sup>th</sup> DAY OF MARCH 1914, SUPERSEDING ALL MAPS HERETOFORE FILED AFFECTING THE AREA EMBRACED BY SAID MAP IN SO FAR AS IT MAKES ANY CHANGES THEREIN, PREPARED FOR THE BOARD OF ESTIMATE AND APPROPRIATION UNDER AUTHORITY OF THE CHARTER OF THE CITY OF NEW YORK, DATED, NEW YORK, APRIL 7, 1914.

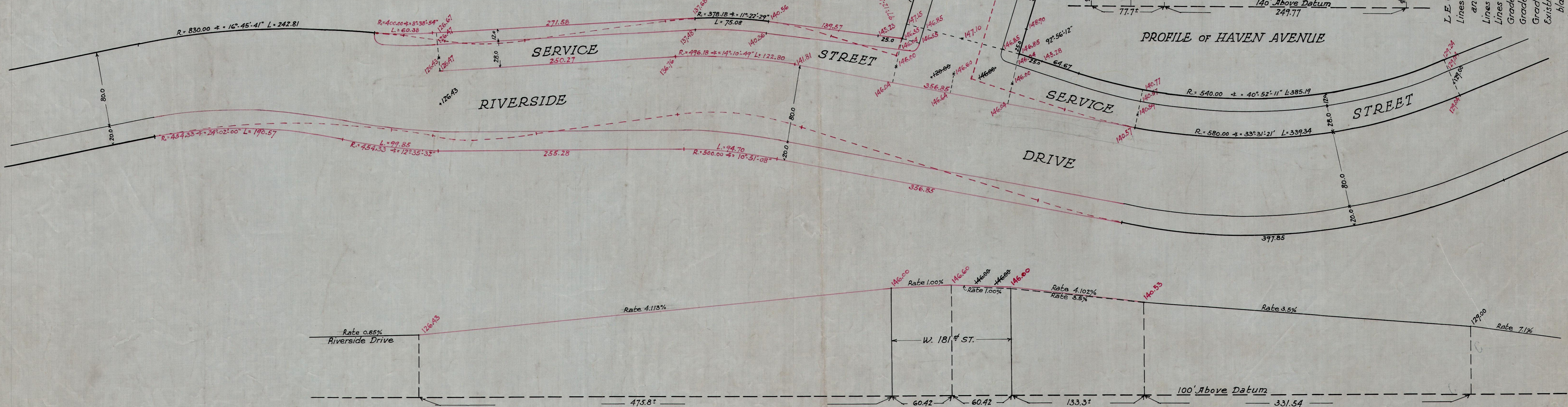
JOSEPH HAAG  
Secretary, Board of Estimate and Appropriation.



PROFILE OF W. 181<sup>st</sup> STREET



PROFILE OF NORTHERN AVENUE



PROFILE OF SERVICE STREET

COPIED FROM THE ORIGINAL MARCH 22, 1932  
 COPIED BY R. KOENIGER  
 CHECKED BY U.Z. [Signature]

CITY OF NEW YORK, BOROUGH OF MANHATTAN  
 OFFICE OF THE PRESIDENT  
 BUREAU OF DESIGN AND SURVEY  
 CHANGE IN STREET SYSTEM  
 WIDENING  
 RIVERSIDE DRIVE  
 FROM ABOUT 130 FT. S. TO ABOUT 790 FT. N. OF  
 W. 181<sup>st</sup> STREET  
 CHANGE OF GRADE  
 W. 181<sup>st</sup> STREET  
 FROM NORTHERN AVE. TO RIVERSIDE DRIVE  
 NORTHERN AVENUE,  
 FROM 100 FT. S. TO 84 FT. N. OF  
 W. 181<sup>st</sup> STREET  
 HAVEN AVENUE  
 FROM W. 180<sup>th</sup> STREET TO W. 181<sup>st</sup> ST.  
 RIVERSIDE DRIVE  
 FROM ABOUT 130 FT. S. TO ABOUT 790 FT. N. OF  
 W. 181<sup>st</sup> STREET

DATED DEC. 16, 1913.  
 SCALE: HOR. 1" = 50 FT.  
 VER. 1" = 20 FT.  
 H.D. APPELBY  
 ASSIST. ENGINEER  
 MARCUS M. MARKS  
 PRESIDENT BOROUGH MANHATTAN  
 FILE NO. D 98-3  
 ACC. NO. 21041

LEGEND:  
 Lines and dimensions previously laid out and retained are shown by a full black line and small black figures.  
 Lines and dimensions hereby established are shown by a full red line and small red figures.  
 Lines of streets which are hereby discontinued are shown by a broken, red line.  
 Grades previously established and retained are shown by vertical black figures.  
 Grades hereby established are shown by vertical red figures.  
 Grades hereby abolished are shown by vertical black figures crossed by a black line.  
 Existing surface elevations retained and hereby established are shown by small black figures enclosed in a parenthesis.  
 Lines of grades previously laid out and retained are shown by a full black line.  
 Lines of grades hereby established are shown by a full red line.  
 Lines of grades hereby discontinued are shown by a broken black line.

Elevations on this map are referred to the city datum 2.07 feet above United States Coast and Geodetic Survey Datum

DRAWN: E.J.G.  
 CHECKED: W.M.