

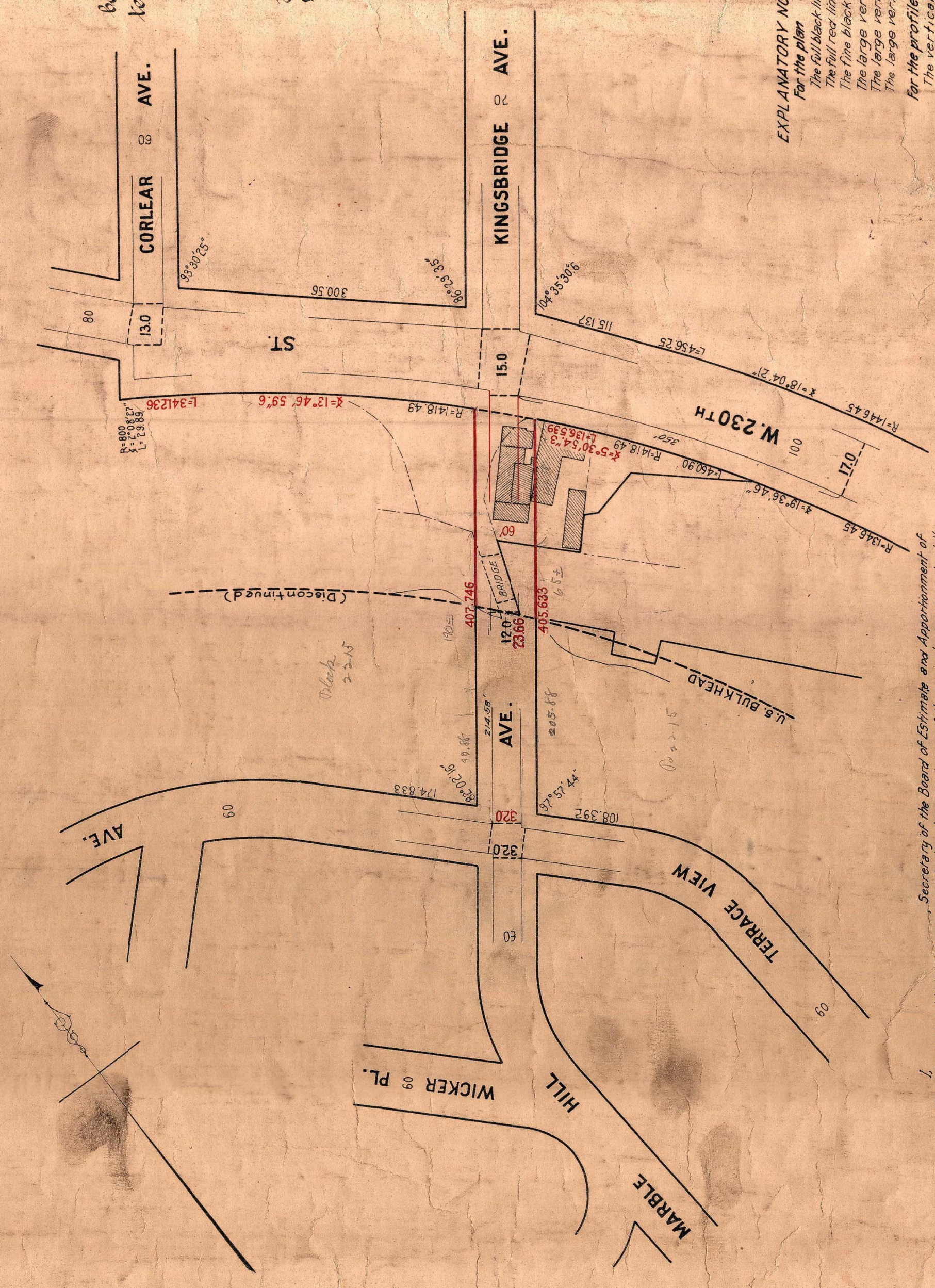
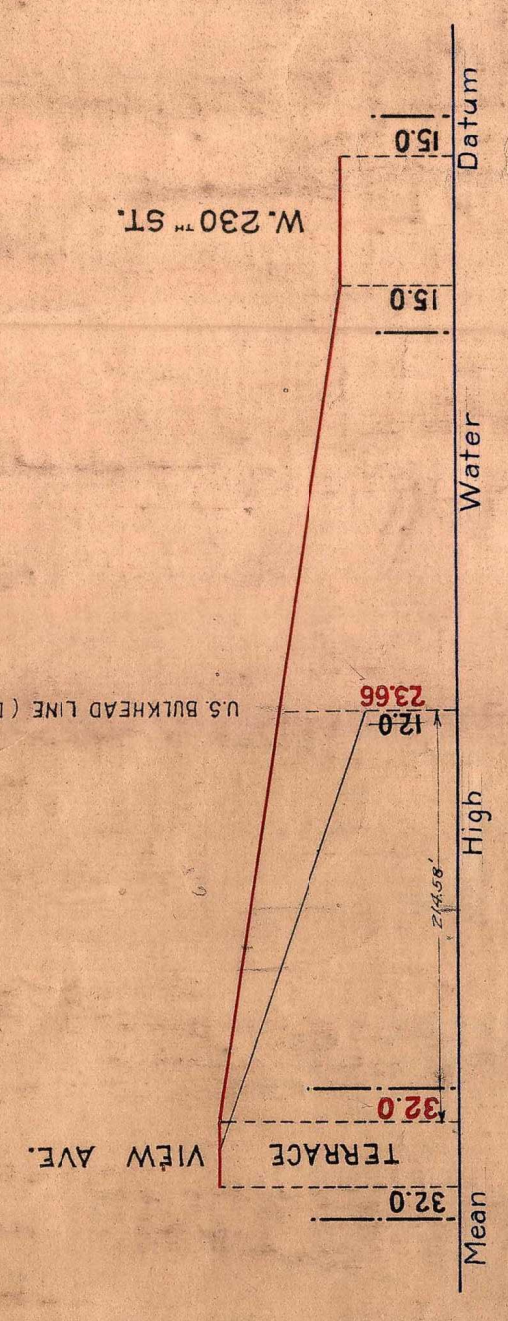
Copy of approved
map changed with
Open House of Bronx
K. H. Hill
6/1/12

City of New York
Borough of Manhattan
Borough of The Bronx
Topographical Bureau

Plan and Profile
showing the extension and the grades of
Kingsbridge Ave.

between W. 230th St. (Borough of The Bronx) and the northerly
terminus of Marble Hill Avenue (Borough of Manhattan)
and the change of grade of
Marble Hill Ave.
between Terrace View Ave. and a point 214.58' northerly
of the N.W. curb intersection of Terrace View Ave.

Borough of The Bronx
Dated, March 4th 1912.



J. Hoffmann
Topographical Engineer

W. D. Affably
Dist. Engineer in Charge

E. P. Goodrich
Consulting Engineer

Chief Engineer, Sewers and Highways

Approved:

C. M. Steiner
President of the Borough of The Bronx

W. W. Healey
President of the Borough of Manhattan

Approved:

EXPLANATORY NOTES

For the plan
The full black lines and small black figures represent the side lines and the dimensions of the streets previously laid out and retained.
The full red lines and small red figures represent the side lines and the dimensions of the streets hereby established.
The fine black lines and fine red lines represent the curb lines of the streets.
The large vertical black figures represent the grades previously established and retained.
The large vertical red figures represent the grades hereby established.
The large vertical black figures crossed by a black line represent the grades hereby abolished.

For the profile
The vertical black figures represent the grades previously established.
The full red line and vertical red figures represent the grades hereby established.
The vertical black figures crossed by black line represent the grades hereby abolished.
The heavy blue horizontal line represents Mean High Water, Datum.
The elevations on this map are referred to the Mean High Water Datum of the Borough of The Bronx 2.67 feet above the United States Coast and Geodetic Survey Datum.

Scales
For the plan ~ 1" = 80'
For the profile { Horizontal ~ 1" = 80'
Vertical ~ 1" = 20'

I, Secretary of the Board of Estimate and Apportionment of the City of New York, do hereby certify that this map is one of three similar maps made at the direction of and adopted by the said Board of Estimate and Apportionment on the day of 1912, and approved by the Mayor on the day of 1912, and that the same are being superintending all maps heretofore filed affecting the area embraced by said map in so far as it makes any changes therein.
Prepared for the Board of Estimate and Apportionment under authority of the Charter of The City of New York.
Dates, New York

Secretary, Board of Estimate and Apportionment