

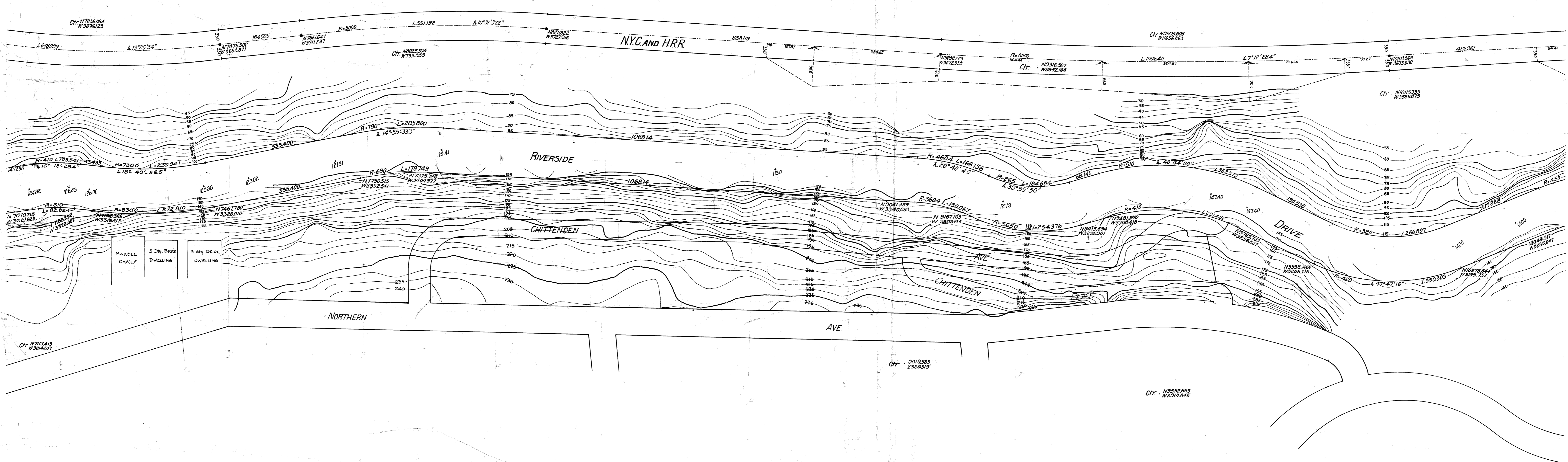
City N 3307272  
W 1982495

City N 4482367  
W 2078785

City N 584156  
W 2074157

City N 6331804  
W 2045144

Ch. 720328N  
413337H



Ch. 72933395  
W2716252

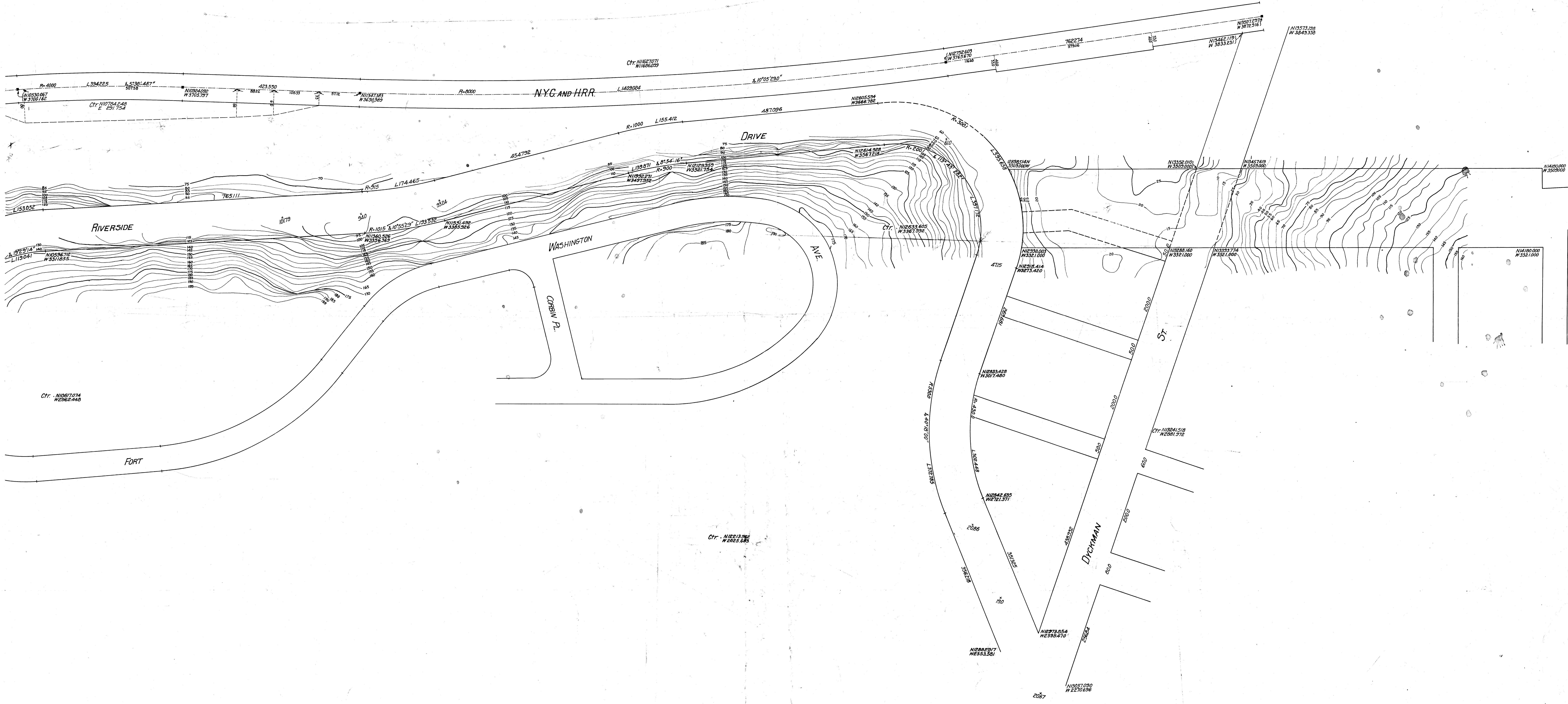
Ch. 2013203  
2900379

Ch. 72528685  
W2544546

Drawn 53

CITY OF NEW YORK - BOROUGH OF MANHATTAN  
OFFICE OF THE PRESIDENT  
BUREAU OF DESIGN AND SURVEY  
**RIVERSIDE DRIVE**  
155<sup>TH</sup> ST. TO DYCKMAN ST.  
DATE: OCT. 1, 1912  
REVISED: MAR. 15, 1916  
FILE NO. D28.21

Ctr. N1801474  
W4864251



Ctr. N1087074  
W286448

Ctr. N121818  
W126528

*[Handwritten mark]*