

MAP SHOWING
EXTENSIONS OF ISHAM PARK
AND
A CHANGE IN THE STREET SYSTEM HERETOFORE LAID OUT
WITHIN THE TERRITORY BOUNDED BY
PARK TERRACE WEST, WEST 215TH ST.,
COLD SPRING ROAD AND ISHAM ST.

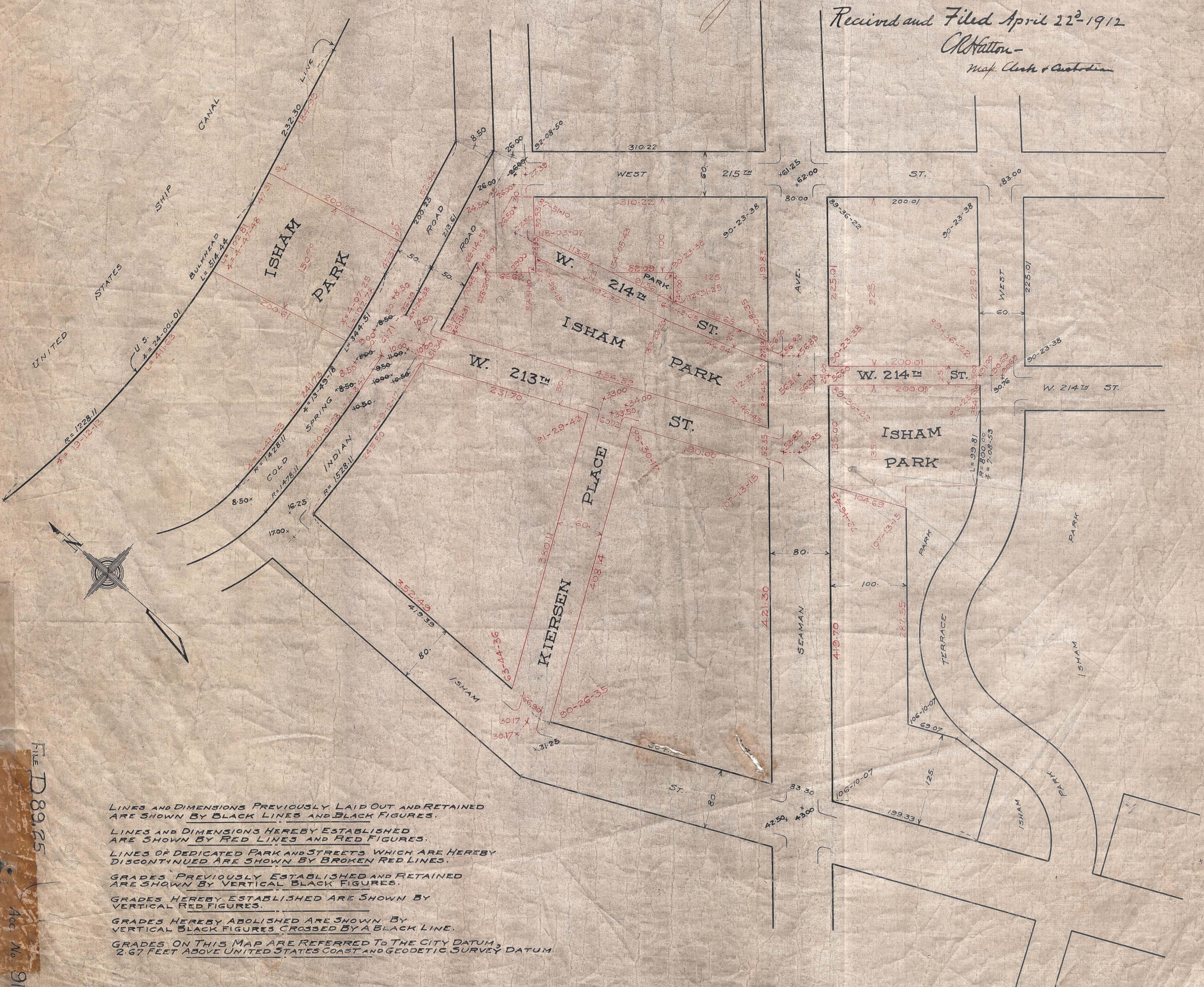
DATED, FEBRUARY 26TH, 1912.

Edw. Appleby
ASSISTANT ENGINEER

George M. ...
PRESIDENT OF THE BOROUGH.

I, *Joseph Haeg*, SECRETARY OF THE BOARD OF ESTIMATE AND APPORTIONMENT OF THE CITY OF NEW YORK DO HEREBY CERTIFY THAT THIS MAP IS ONE OF THE SIMILAR MAPS MADE BY THE DIRECTION OF, AND ADOPTED BY THE SAID BOARD OF ESTIMATE AND APPORTIONMENT ON THE 21ST DAY OF *March*, 1912, AND APPROVED BY THE MAYOR ON THE 27TH DAY OF *March*, 1912, SUPERSADING ALL MAPS HERETOFORE FILED AFFECTING THE AREA ENCOMPASSED BY SAID MAP IN SO FAR AS IT MAKES ANY CHANGES THEREIN. PREPARED FOR THE BOARD OF ESTIMATE AND APPORTIONMENT UNDER AUTHORITY OF THE CHARTER OF THE CITY OF NEW YORK, DATED, NEW YORK, *April 19*, 1912.
Joseph Haeg
SECRETARY, BOARD OF ESTIMATE AND APPORTIONMENT.

Received and Filed April 22nd 1912
Al Watton
Map Clerk & Custodian



LINES AND DIMENSIONS PREVIOUSLY LAID OUT AND RETAINED ARE SHOWN BY BLACK LINES AND BLACK FIGURES.
LINES AND DIMENSIONS HEREBY ESTABLISHED ARE SHOWN BY RED LINES AND RED FIGURES.
LINES OF DEDICATED PARK AND STREETS WHICH ARE HEREBY DISCONTINUED ARE SHOWN BY BROKEN RED LINES.
GRADES PREVIOUSLY ESTABLISHED AND RETAINED ARE SHOWN BY VERTICAL BLACK FIGURES.
GRADES HEREBY ESTABLISHED ARE SHOWN BY VERTICAL RED FIGURES.
GRADES HEREBY ABOLISHED ARE SHOWN BY VERTICAL BLACK FIGURES CROSSED BY A BLACK LINE.
GRADES ON THIS MAP ARE REFERRED TO THE CITY DATUM, 2.67 FEET ABOVE UNITED STATES COAST AND GEODETIC SURVEY DATUM.

SCALE: 1 INCH = 80 FEET

9122 *Geo. Whaler*
CITY SURVEYOR,
MANHATTAN.

FILE D 89.25
Acc. No. 9122