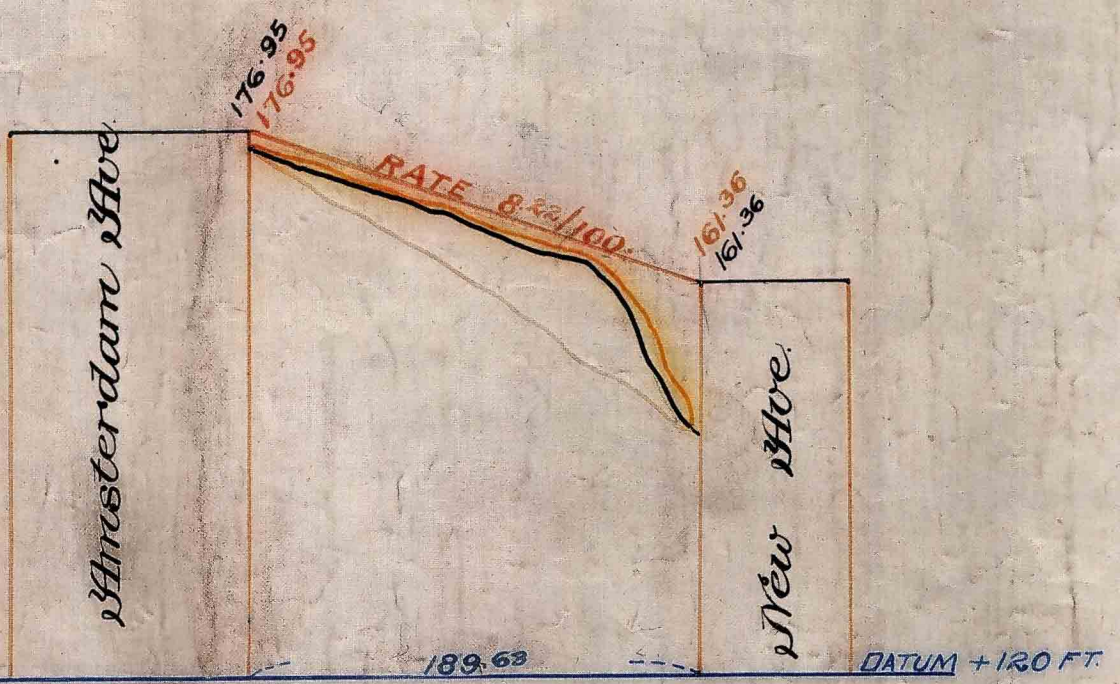


8337

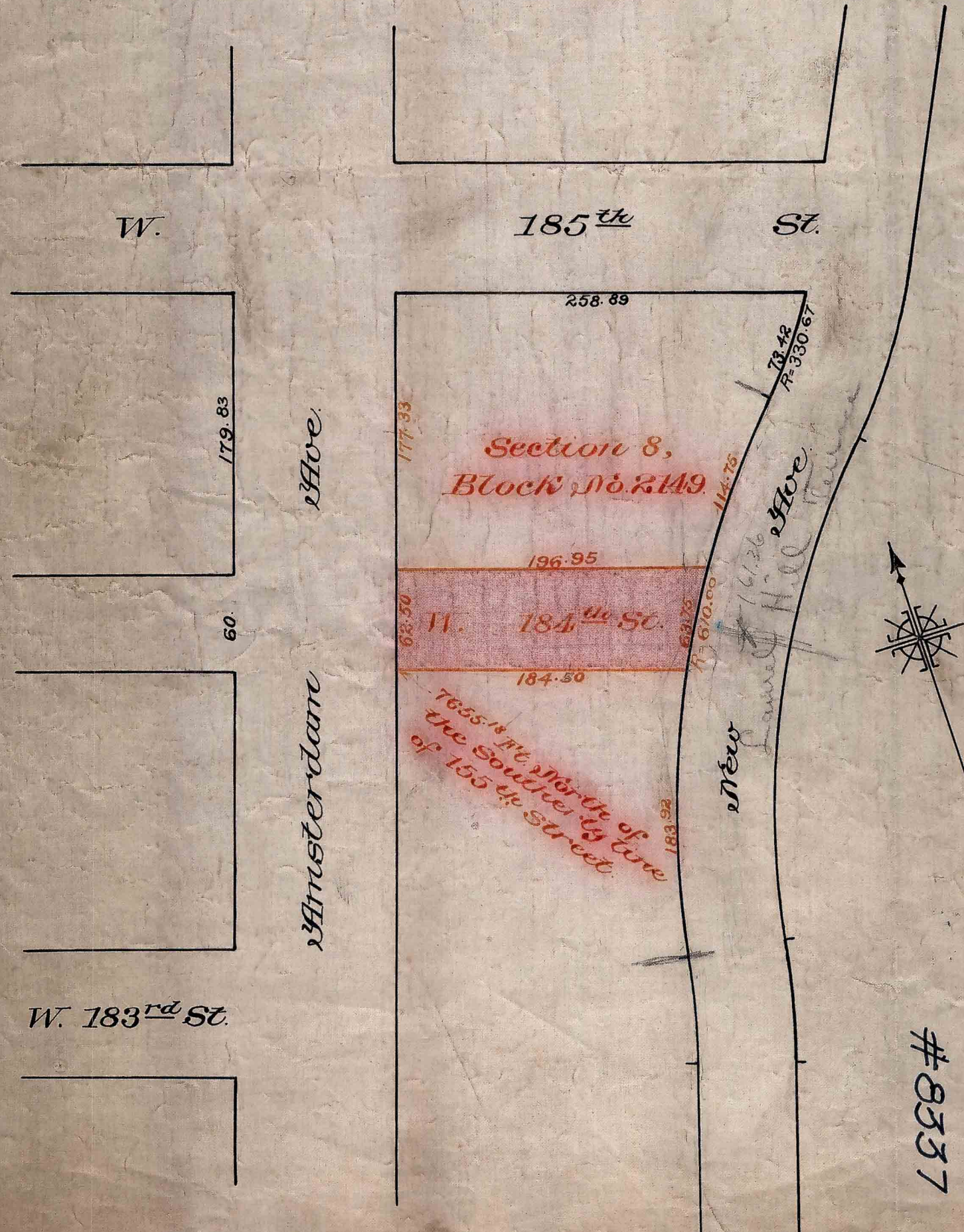


Profile of W. 184th St
Grades, 30 Feet North of South House Line.

Office of the President of the Borough of
Manhattan, City of New York.

Map of the Extension of West 184th
Street from Amsterdam Avenue to
First New Avenue East, in the 12th
Ward, Borough of Manhattan, City of
New York.

Jon. O. B. Webber
Engineer of Street Operations.



Note: Old Streets Shown in Black Lines and Figures.
New Street, shown in Red Lines and Figures.
Elevations Above City Datum.
Horizontal Distances Between Grades Shown
in Blue.

Scales:
Horizontal, 1 in = 80 Ft.
Vertical, 1 in = 20 Ft.

— NORTH HOUSE LINE
— CENTER LINE.
— SOUTH HOUSE LINE.

I, Joseph Haag, Secretary of the Board of Estimate and Apportionment of the City of New York, Do Hereby Certify that this Map or Plan and Profile is one of three similar Plans and Profiles, showing the changes in the Map or Plan of the City of New York as heretofore adopted, entitled: "Map of the Extension of West 184th Street from Amsterdam Avenue to First New Avenue East, in the 12th Ward, Borough of Manhattan, City of New York;" which changes were approved by the Board of Estimate and Apportionment on the 22nd day of November 1907, and by the Mayor on the day of December 1907.

Under Authority of the Greater New York Charter, Dated this 5th day of November 1908.

Joseph Haag
Secretary of the Board of Estimate and Apportionment.

Received and Filed Nov 10th 1908
C. R. Hatton, Map Clerk, N.Y. City

FILE D 18.21
X D 18.23

8337

(B)