

Office of the President of the Borough of
 — Manhattan, City of New York —

Map of the
 — Addition to St. Nicholas Park, —
 — from —

The Southerly Line of said Park, being the Prolongation of the southerly line of West 130th Street from St. Nicholas Avenue to St. Nicholas Terrace, to a line 5 feet southerly from the Prolongation of the southerly line of West 128th Street from St. Nicholas Avenue to St. Nicholas Terrace; in the 12th Ward, Borough of Manhattan, City of New York.

Jos. O. B. Weber

Engineer of Street Openings.

Approved this _____ day of _____ 1906.

 Mayor

I, Joseph Haag, Secretary of the Board of Estimate and Apportionment of the City of New York, Do Hereby Certify that this Map or Plan, is one of three similar maps or plans, showing the Changes in the Map or Plan of the City of New York as heretofore adopted, entitled:— Map of the Addition to St. Nicholas Park, from the Southerly Line of said Park, being the Prolongation of the southerly line of West 130th Street from St. Nicholas Avenue to St. Nicholas Terrace, to a line 5 feet southerly from the Prolongation of the southerly line of West 128th Street from St. Nicholas Avenue to St. Nicholas Terrace; in the 12th Ward, Borough of Manhattan, City of New York; which changes were approved by the Board of Estimate and Apportionment on the 29th day of December 1905, and by the Mayor on the 4th day of January 1906. Under authority of the Greater New York Charter:

Dated this 28th day of May 1906.

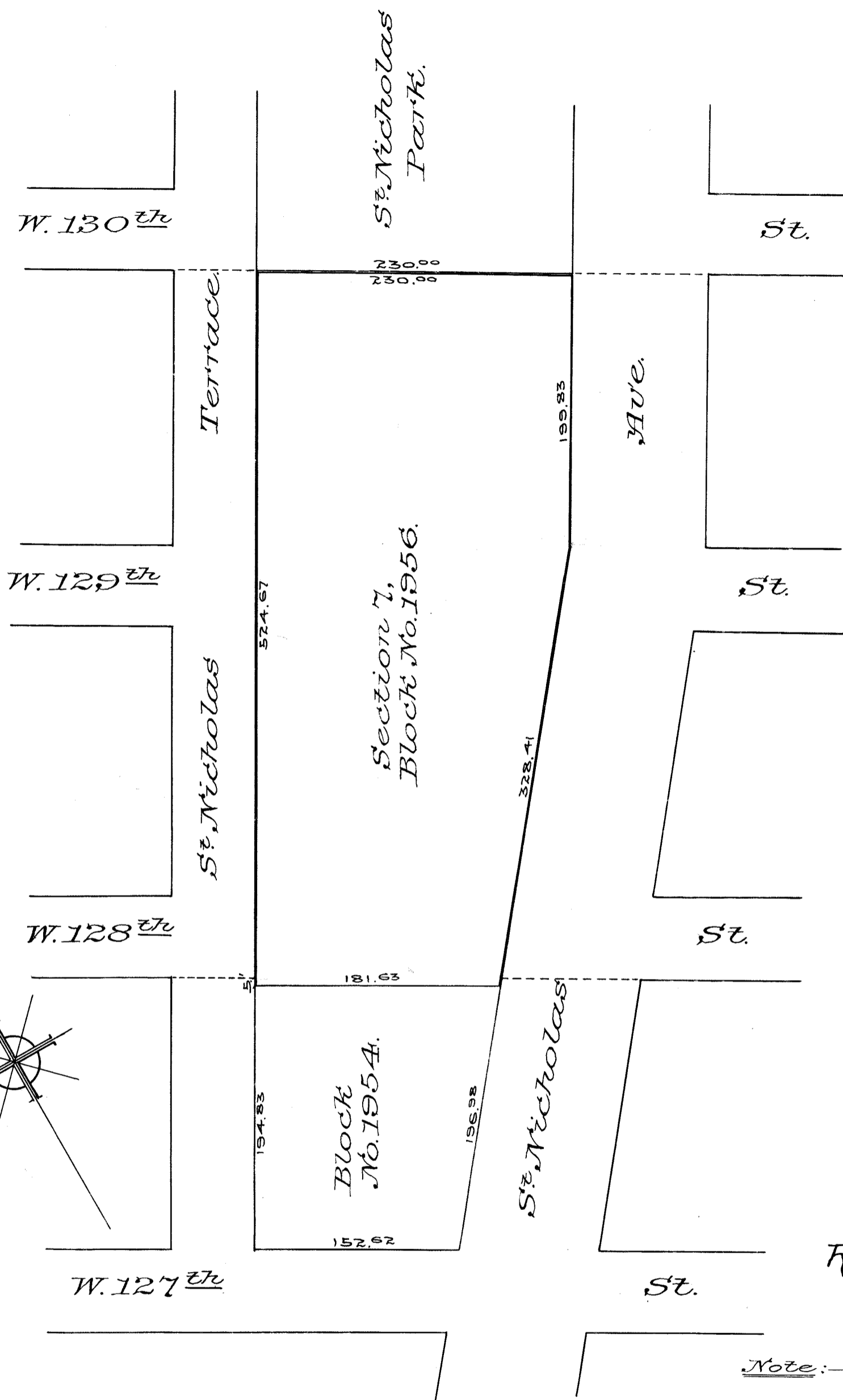
 Secretary of the Board of Estimate and Apportionment.

Received and Filed June 1st 1906

C. R. Hatton

Map Clerk NYC

Note:— The Addition to St. Nicholas Park, colored Green.



St. Nicholas Park - 128th St - 130th St

128th St