

— Office of the President of the —  
Borough of Manhattan, City of New York.

Map or Plan

— of a —

Public Park

— bounded by —

Broadway, W. 138<sup>th</sup> Street and Hamilton Place,

— in the —

12<sup>th</sup> Ward, Borough of Manhattan

City of New York.

— 1904. —

~~Approved this~~ day of ~~1904.~~

~~Mayor~~

*Jos. O. B. Weber*

Engineer of Street Operations.

I, James W. Stevenson, Secretary of the Board of Estimate and Apportionment of the City of New York, Do Hereby Certify that this Map or Plan is one of three similar Maps or Plans showing the changes in the Map or Plan of the City of New York as heretofore adopted, entitled: "Map or Plan of a Public Park, bounded by Broadway, W. 138<sup>th</sup> Street and Hamilton Place, in the 12<sup>th</sup> Ward, Borough of Manhattan, City of New York," which changes were approved by the Board of Estimate and Apportionment on the 17<sup>th</sup> day of June 1904, and by the Mayor on the 28<sup>th</sup> day of June 1904.

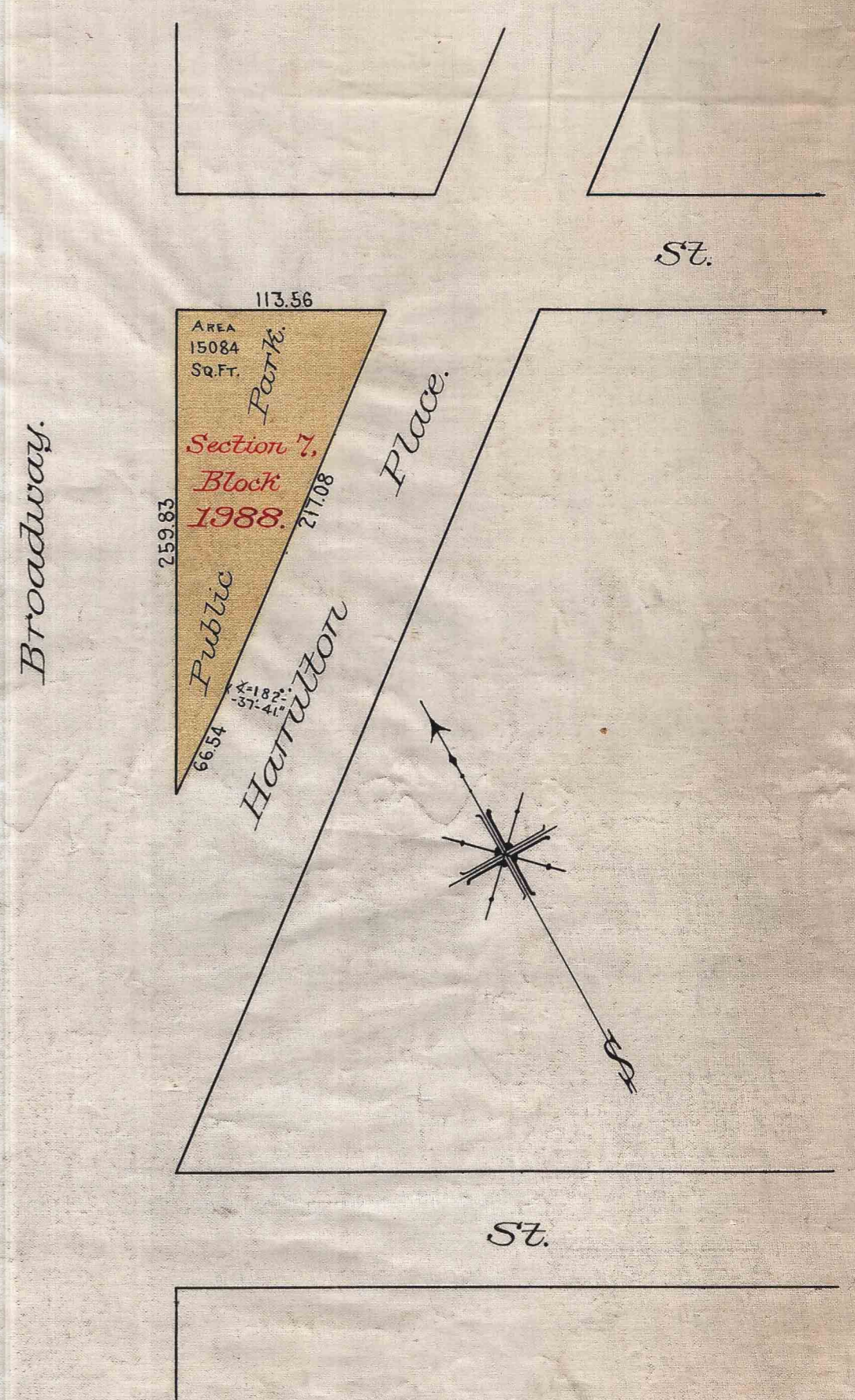
Under authority of the Greater New York Charter.

Dated this 12<sup>th</sup> day of September, 1904.

*J. W. Stevenson*  
Secretary of the Board of Estimate and Apportionment.



Record and Filed Sept 15<sup>th</sup> 1904  
C. R. Hatton - Map Clerk



Note:— Land to be taken for a Public Park, colored Green. Area to be taken is 15084 Sq. Ft.

FILE D 82.25  
x D 88.25

7392 (B)

1-9-83222

1904