

Office of the President of the Borough of
Manhattan, City of New York.

Map, Plan and Profile of Established Grades
of a
Public Drive and Parkway
as an
Extension of Riverside Drive to Boulevard Lafayette.

Section 2, as amended.

Showing the Adjustment of the Grades of the Drive
and the Lines and Grades of the Connecting Streets, from
West 135th Street to End of Curve North of West 132nd Street,
in the
12th Ward, Borough of Manhattan, City of New York.

Under authority of the Greater New York Charter.

Old Streets and their Grades, shown in Black Lines and Figures.
Drive and Parkway, shown in Red Lines and Figures.
New Grades, fixed and established, shown in Red Lines and Figures.
All Measurements above City Datum.
Horizontal Distances between Grades, shown in Blue.

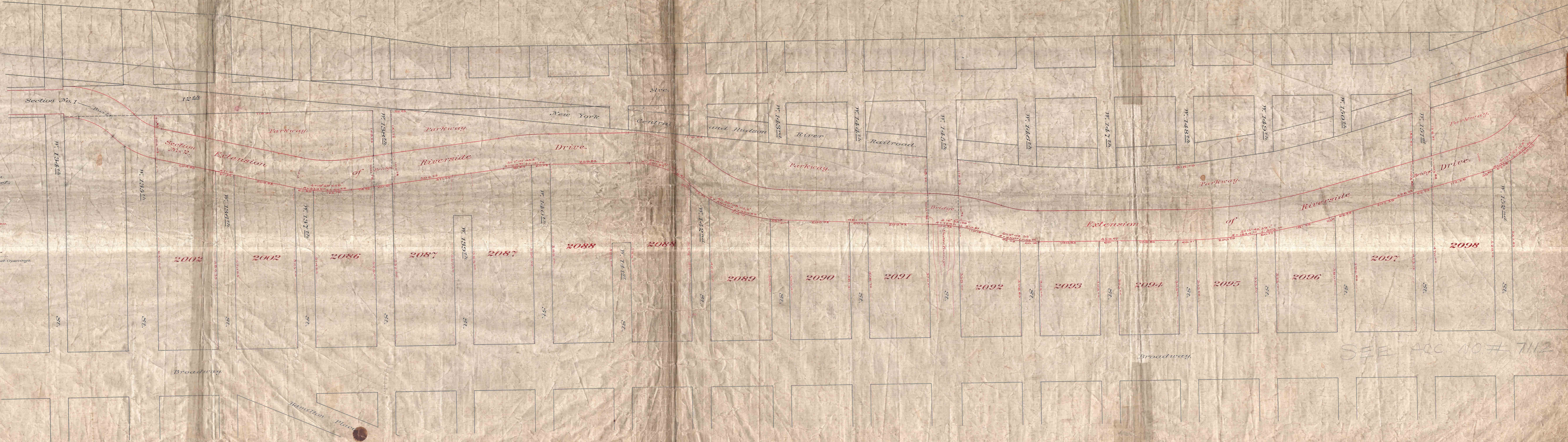
J. O. B. White,
Engineer of Street Opening.

I, J. M. ... Secretary of the Board of Estimate
and Apportionment of the City of New York, do hereby certify
that this Plan and Profile, is one of three similar plans and
profiles, showing the changes in the Map or Plan of the
City of New York as heretofore adopted entitled - Map, Plan
and Profile of Established Grades of a Public Drive and Parkway
as an Extension of Riverside Drive to Boulevard Lafayette,
Section 2, as amended. The Adjustment of the Grades
of the Drive, and the Lines and Grades of the Connecting
Streets, from West 135th Street to End of Curve North of West
132nd Street, in the 12th Ward, Borough of Manhattan,
City of New York, which changes were approved by the
Board of Estimate and Apportionment on the 18th day of
December, 1903, and by the Mayor on the 29th day of
December, 1903. Under authority of the Greater New York
Charter.

Dated this 29th day of December, 1903.

Secretary of the Board of
Estimate and Apportionment.

Received and Filed, January 7th, 1904.
C. K. Hallen,
Map Clerk.



SEE ACC NO # 7112