

I, Joseph Haag, SECRETARY OF THE BOARD OF ESTIMATE AND APPORTIONMENT OF THE CITY OF NEW YORK, DO HEREBY CERTIFY THAT THIS MAP IS ONE OF THREE SIMILAR MAPS MADE AT THE DIRECTION OF, AND ADOPTED BY THE SAID BOARD OF ESTIMATE AND APPORTIONMENT ON THE 18th DAY OF May, 1911, AND APPROVED BY THE MAYOR ON THE 29th DAY OF May, 1911, SUPERSADING ALL MAPS HERETOFORE FILED AFFECTING THE AREA EMBRACED BY SAID MAP IN SO FAR AS IT MAKES ANY CHANGES THEREIN.

PREPARED FOR THE BOARD OF ESTIMATE AND APPORTIONMENT UNDER AUTHORITY OF THE CHARTER OF THE CITY OF NEW YORK. DATED, NEW YORK, DEC. 27, 1911, 1911

Joseph Haag
SECRETARY, BOARD OF ESTIMATE AND APPORTIONMENT.

CITY OF NEW YORK, BOROUGH OF MANHATTAN.
— OFFICE OF THE PRESIDENT, —
— TOPOGRAPHICAL BUREAU. —

MAP SHOWING A CHANGE OF GRADE
— IN WEST 141ST STREET, —
BETWEEN BROADWAY AND RIVERSIDE DRIVE.

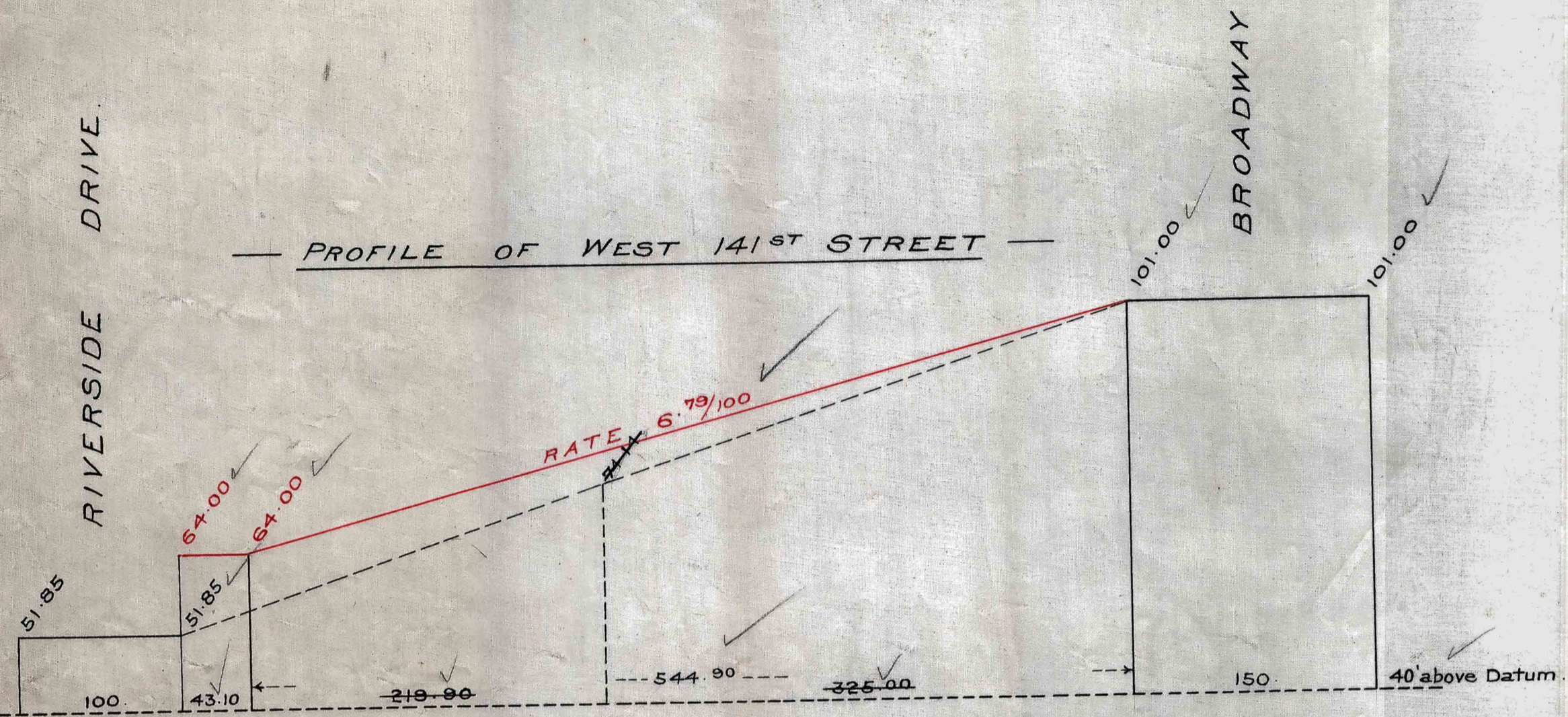
April 10,
— ~~August 25~~, 1911. —

Robert Appleby
ASSISTANT ENGINEER.
George McAvoy
PRESIDENT OF THE BOROUGH.

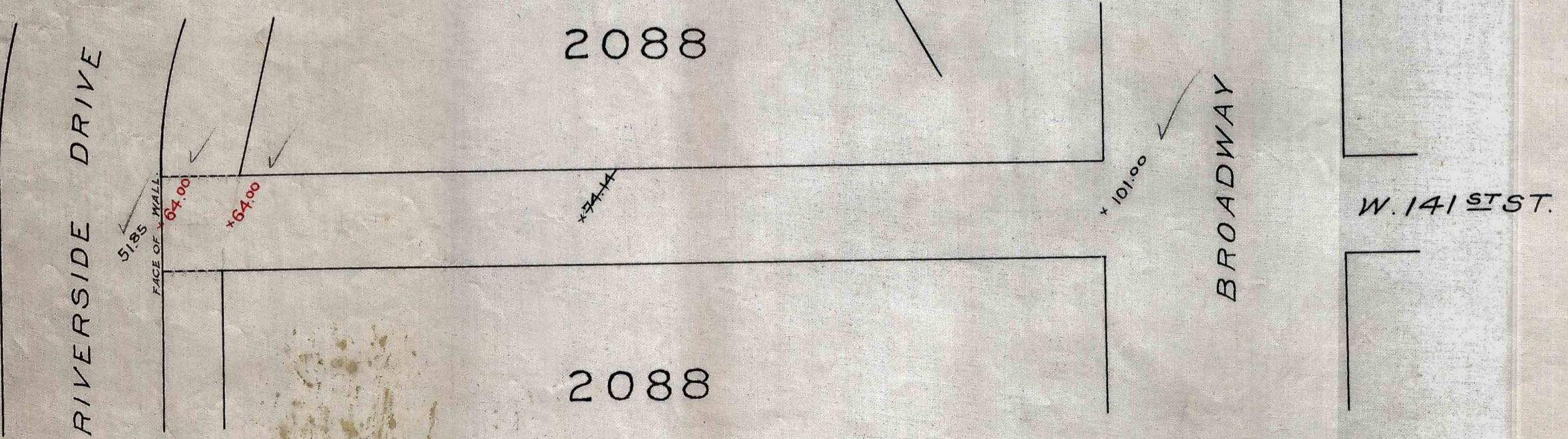
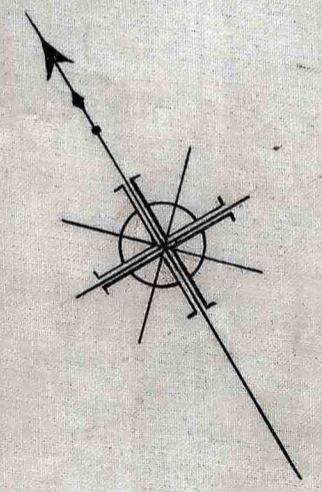
Received and Filed Dec 27th 1911
C. R. Hatton
Map Clerk N.Y.C.

FILE D14.22
ACC. No. 6881

(B)



Scale: Vertical, 1 in. = 20 ft.
Horizontal, 1 in. = 80 ft.



Note. Elevations on this Map are referred to a City Datum 2.67 feet above U.S. Coast and Geodetic Survey Datum.

Drawn by