

*PLAN AND PROFILE of the change of Grade on
135th St from Boulevard to 12th Avenue.*

IN THE TWELFTH WARD OF THE CITY OF NEW YORK
under authority Chap. 410 - Laws 1882
" " " 660 " 1893 }

Jos. O. B. Weber
Asst Eng. D.P.W

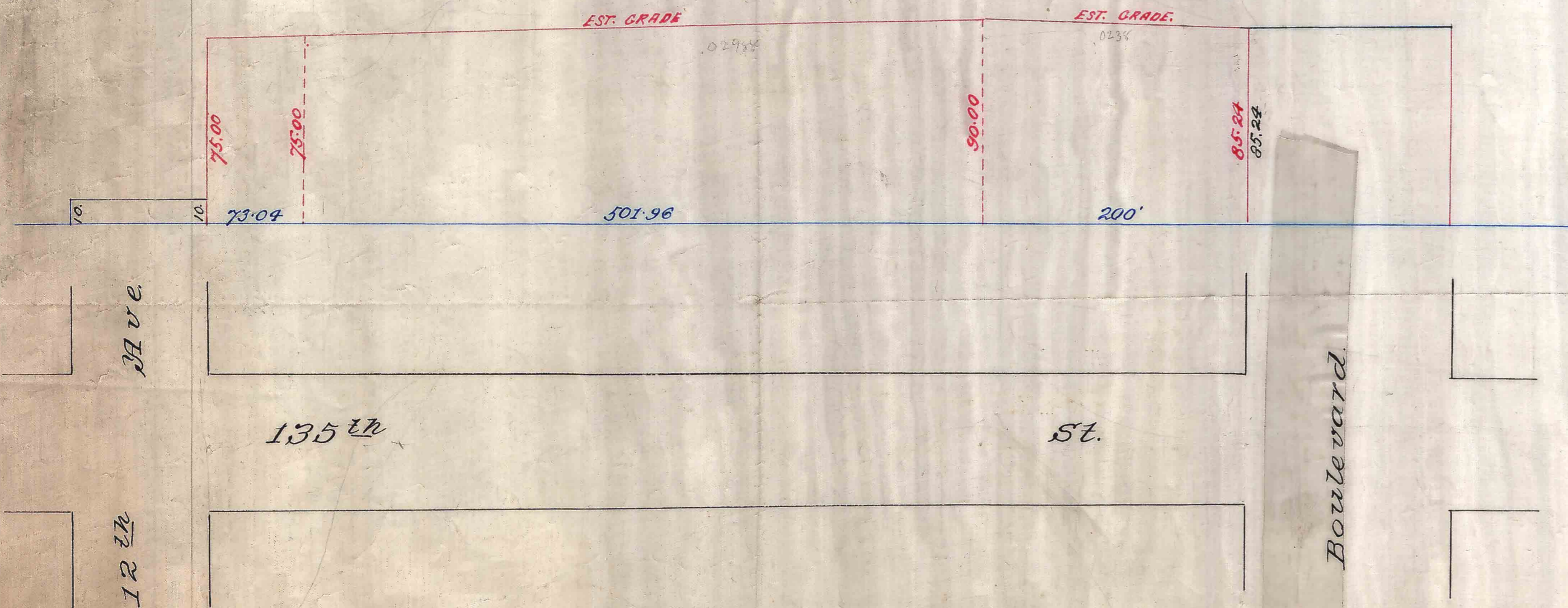
PLAN AND PROFILE

NOTE - OLD GRADES AND GRADES OF CONNECTING STREETS SHOWN IN BLACK.

NEW GRADES FIXED AND ESTABLISHED SHOWN IN RED.

ELEVATIONS ABOVE CITY BASE IN RED.

HORIZONTAL DISTANCES SHOWN IN BLUE.



The Board of Street Opening and Improvement of the City of New York, certify that under and in pursuance of the Powers given under chapter 660 Laws 1893. We have fixed and established the Grade of 135th Street from Boulevard to 12th Avenue in the 12th ward of City of New York as shown on this Map and Profile and this Map and Profile is one of three Maps and Profiles in all respects similar, showing the grade of said Street. Adopted by said Board, November 19th 1897.

Note - NEW GRADES SHOWN IN RED LINES AND FIGURES.

W. C. C. Mayor

Albee R. Hatch Comptroller.

Charles J. Collins - Commr. of Pub. Wks.

Sam'l M. Miller - Presdt Board Pub. Parks

Presdt Board Aldermen

BOARD OF STREET
OPENING AND
IMPROVEMENT.

SECRETARY *V. B. Livingston*

Rec'd St Suptm'ts Nov 26th 1897

Sheets # 2

Callahan & Map Co's
D.P.W.

FILE D 13.23

6008