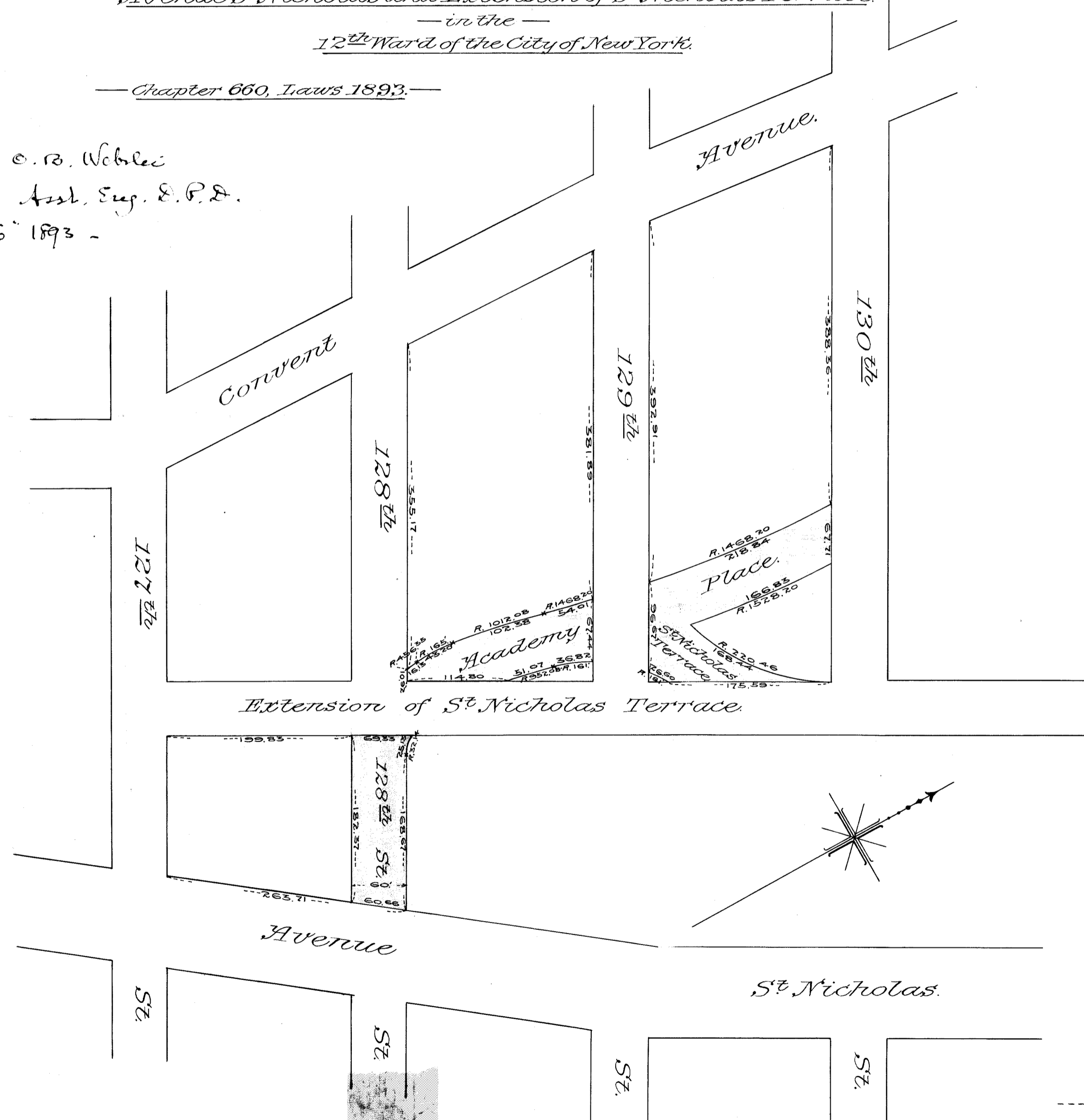


—Map or Plan Showing the Closing of—
Academy Place,
 —between—
128th and 130th Streets;
 —and that part of—
S^t. Nicholas Terrace,
 —between—
The Northernly Line of 129th Street
 —and—
The Westerly Line of the Extension of S^t. Nicholas Terrace;
 —and—
128th Street,
 —between—
Avenue, S^t. Nicholas and Extension of S^t. Nicholas Terrace.
 —in the—
12th Ward of the City of New York.

—Chapter 660, Laws 1893.—

Geo. C. R. Weblee
 Asst. Eng. S. P. D.
 June 16th 1893 -



The Board of Street Opening and Improvement of the City of New York, by and under authority of Chapter 660, of the Laws of the State of New York, passed May 9th 1893, does hereby certify that this Map or Plan is one of two Maps or Plans in all respects similar which this Board has caused to be made and has directed to be filed in the manner provided by said Act; showing part of Academy Place between 128th and 129th Streets and between 129th and 130th Streets,—and 128th Street between Avenue S^t. Nicholas and Extension of S^t. Nicholas Terrace,—and that part of S^t. Nicholas Terrace between the northernly line of 129th St. and the westerly line of the Extension of S^t. Nicholas Terrace, in the 12th Ward of the City of New York, as closed and discontinued by this Board on the 24th day of March 1894.

Note:—The streets, and parts of streets closed and discontinued, colored Grey.

Wm. F. Gibney Mayor;
 Albert S. Fitch Comptroller;
 Maurice F. Nolan Acty. Com^r of Public Works,
 A. B. Tappan Pres^t of Public Parks,
 Edward C. Callan Pres^t of Board of Aldermen.

Board of
 Street Opening
 and
 Improvement.

Filed Feb 2/94
 Chas. H. ...

W. B. Livingston Secretary.