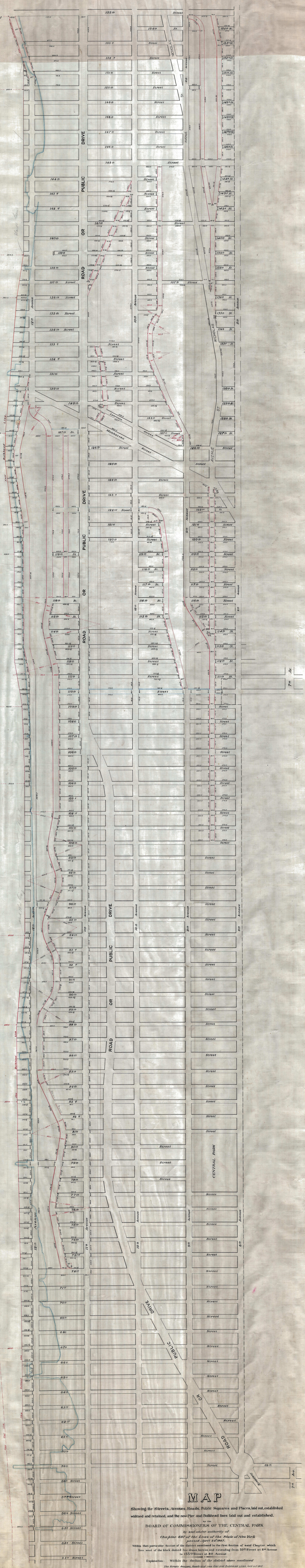


N  
 O  
 R  
 T  
 H  
 O  
 R  
 O  
 S  
 O  
 R  
 I  
 V  
 E  
 D  
 R  
 I  
 V  
 E



**MAP**

Showing the Streets, Avenues, Roads, Public Squares and Places, laid out, established, widened and retained, and the new Pier and Bulwark lines laid out and established.

BOARD OF COMMISSIONERS OF THE CENTRAL PARK  
 Chapter 687 of the Laws of the State of New York  
 passed April 24, 1867.  
 Within that portion of the District mentioned in the first Section of said Chapter which  
 lies west of the black dotted line shown hereon and extending from 59th Street at 8th Avenue  
 to 155th Street at 8th Avenue.

Explanation. Within the Section of the District above mentioned  
 The Streets, Avenues, Roads and Pier and Bulwark Lines, laid out and established, are colored Blue.  
 The Streets, Avenues and Roads, widened by said Board are colored Red.  
 The Public Squares and Places laid out by said Board are colored Green.  
 The Streets, Avenues and Roads, retained by said Board are colored Black.  
 All parts of new Streets, Avenues, Roads, Public Squares and Places, laid out and established, within the said particular Section, of said District which are not shown or retained on this map, are from and after the time of their being authorized and created, and come in to be or remain, Public Streets, Avenues, Roads, Squares or Places.

NEW YORK February 24th 1868.  
 John J. Cooper  
 Surveyor of the Park