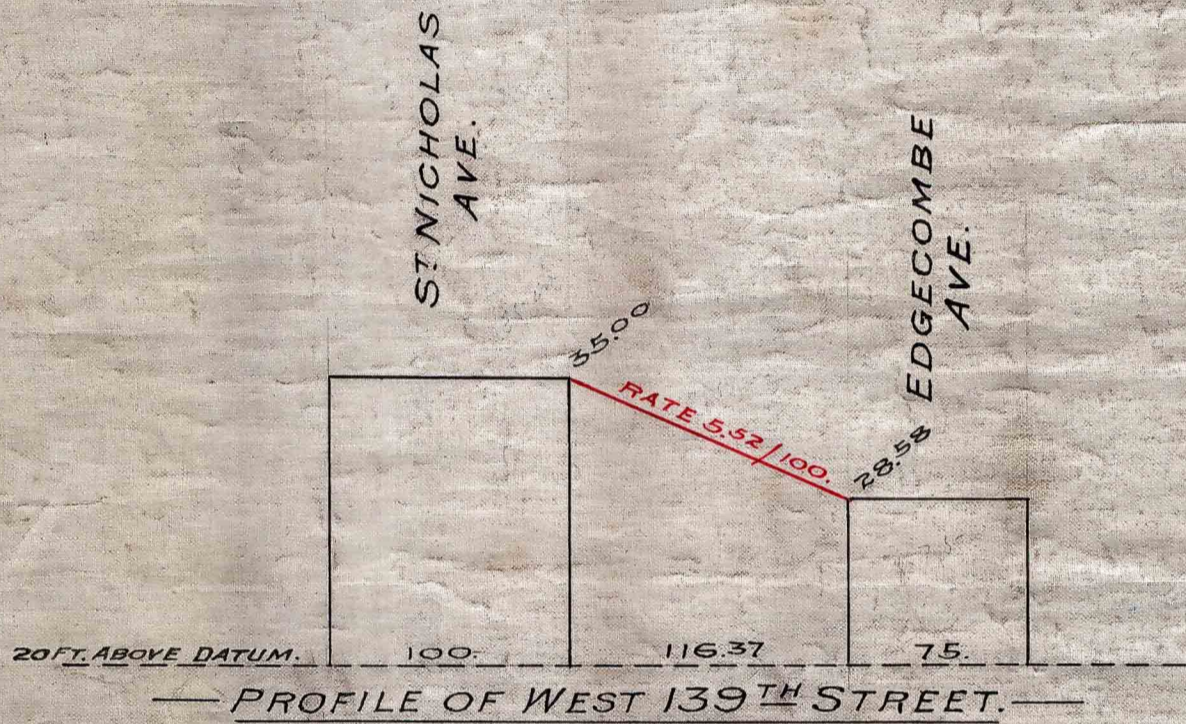


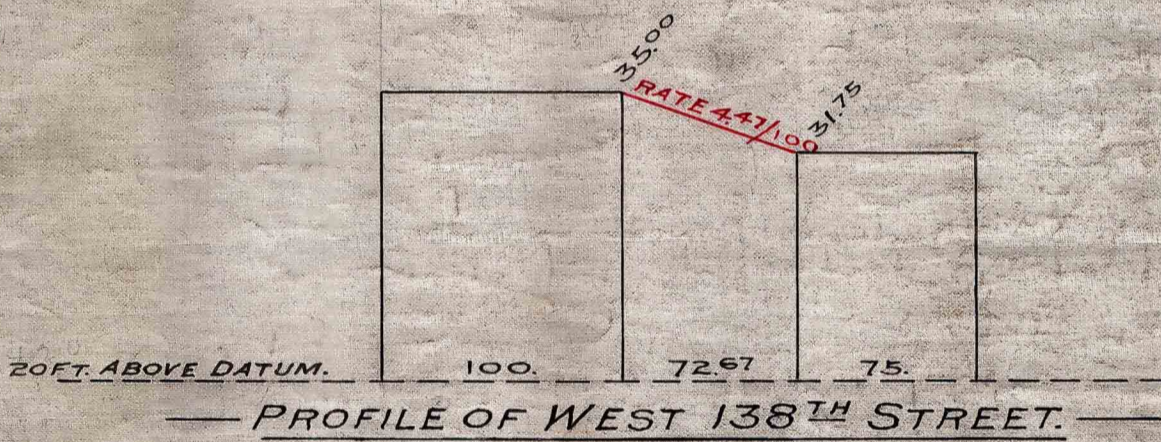
I, Joseph Haag, SECRETARY OF THE BOARD OF ESTIMATE AND APPORTIONMENT OF THE CITY OF NEW YORK, DO HEREBY CERTIFY THAT THIS MAP IS ONE OF THREE SIMILAR MAPS MADE AT THE DIRECTION OF, AND ADOPTED BY, THE SAID BOARD OF ESTIMATE AND APPORTIONMENT ON THE 18th DAY OF April, 1912, AND APPROVED BY THE MAYOR ON THE 15th DAY OF April, 1912, SUPERSADING ALL MAPS HERETOFORE FILED AFFECTING THE AREA EMBRACED BY SAID MAP IN SO FAR AS IT MAKES ANY CHANGES THEREIN.

PREPARED FOR THE BOARD OF ESTIMATE AND APPORTIONMENT UNDER AUTHORITY OF THE CHARTER OF THE CITY OF NEW YORK. DATED, NEW YORK, JUN 14 1912, 1912

Joseph Haag
SECRETARY, BOARD OF ESTIMATE AND APPORTIONMENT



ELEVATIONS ON THIS MAP ARE REFERRED TO A DATUM 2.67 FEET ABOVE UNITED STATES COAST AND GEODETIC SURVEY DATUM.



CITY OF NEW YORK, BOROUGH OF MANHATTAN,
OFFICE OF THE PRESIDENT,
TOPOGRAPHICAL BUREAU.

MAP SHOWING THE EXTENSION OF
WEST 138TH AND WEST 139TH STREETS,
FROM
EDGE COMBE AVENUE TO ST. NICHOLAS AVENUE.

DATED, SEPT. 15TH 1911.
SCALE:— HORIZONTAL, 1 INCH = 80 FEET.
VERTICAL, 1 INCH = 10 FEET.

Ed. Affelely ASSISTANT ENGINEER.

Luigi A. Amey PRESIDENT OF THE BOROUGH.

