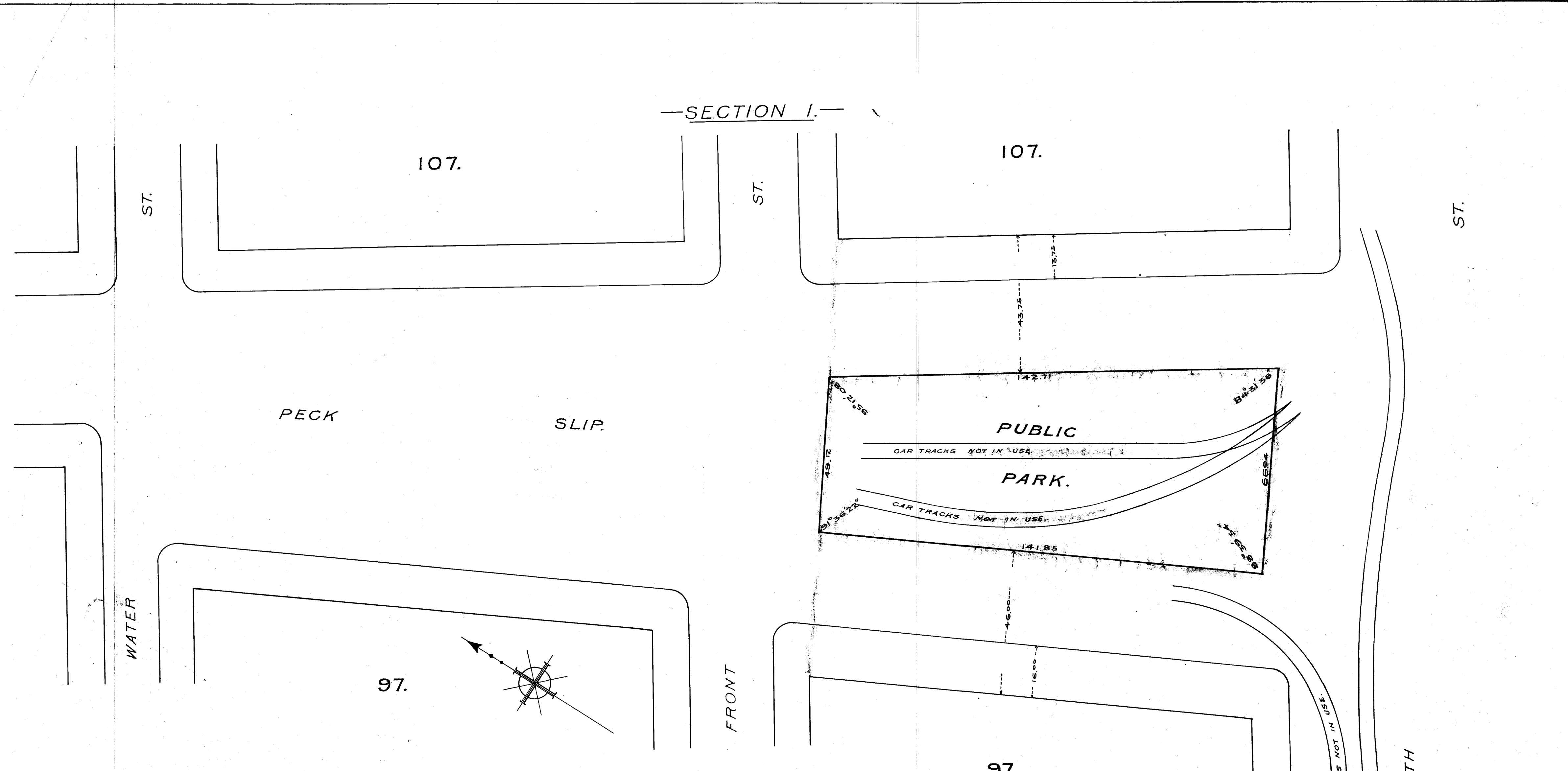


SECTION I.



Joseph Haag SECRETARY OF THE BOARD OF ESTIMATE AND APPORTIONMENT OF THE CITY OF NEW YORK, DO HEREBY CERTIFY THAT THIS MAP IS ONE OF THREE SIMILAR MAPS MADE AT THE DIRECTION OF AND ADDED BY THE BOARD OF ESTIMATE AND APPORTIONMENT ON THE 2nd DAY OF May 1912, AND WAS APPROVED BY THE MAYOR ON THE 10th DAY OF May 1912, SUPERSEDING ALL MAPS HERETOFORE FILED CONCERNING THE AREA ENCOMPASSED BY SAID MAP IN SO FAR AS IT MAKES ANY CHANGES THEREIN.
PREPARED FOR THE BOARD OF ESTIMATE AND APPORTIONMENT UNDER AUTHORITY OF THE CHARTER OF THE CITY OF NEW YORK.
DATED, NEW YORK, JUN 14 1912
SECRETARY BOARD OF ESTIMATE AND APPORTIONMENT

CITY OF NEW YORK, BOROUGH OF MANHATTAN,
OFFICE OF THE PRESIDENT,
TOPOGRAPHICAL BUREAU.
MAP SHOWING A PUBLIC PARK,
IN
PECK SLIP
BETWEEN
FRONT STREET AND SOUTH STREET.

DATED, SEPT. 27th 1911.
SCALE: - 1 INCH = 20 FEET.

Wm. C. Appleby ASSISTANT ENGINEER.
Wm. H. ... PRESIDENT OF THE BOROUGH.

File D 96.25

ACC. No. 22

Sheet 4